



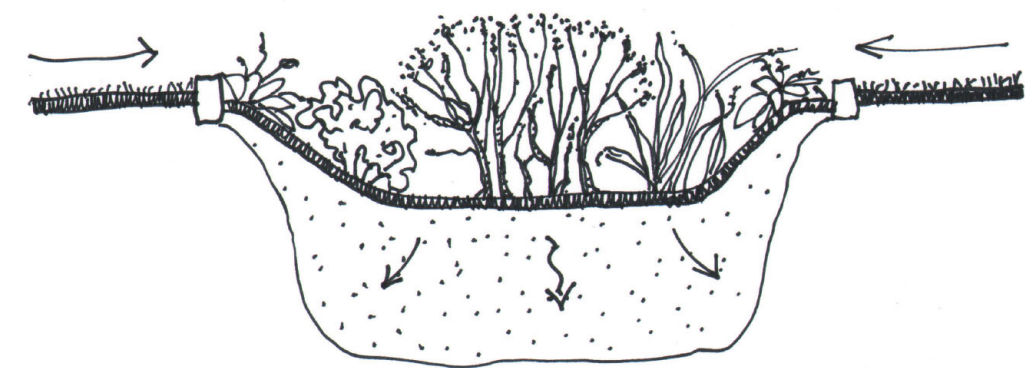
**WHAT IS CONTOURING FOR RAIN? WHAT IS A SWALE?**

Your garden features a will be lightly contoured to infiltrate rainfall . Contouring for rainwater eliminates runoff from the landscape surface to the street.

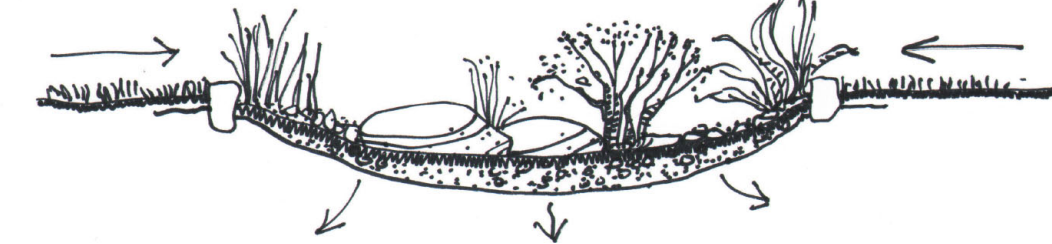
Over time, the plants may grow over contours, but they will still function.

The purpose of infiltrating rainfall is to allow soil to cleanse water as it passes through as groundwater. Water allowed to run off our landscapes and down our streets to the ocean creates dirty outflows and polluted beaches. Healthy garden soil has the ability to filter, cleanse and purify land based pollution before it gets to the ocean.

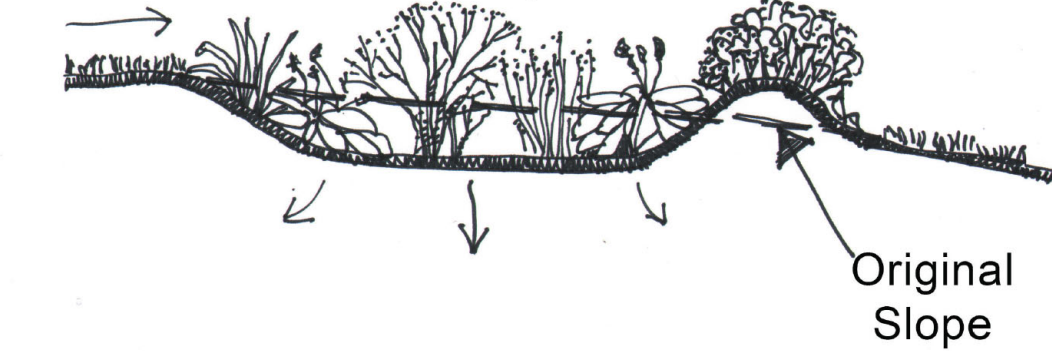
A: Rain Garden (planted)



B: 'Dry Creekbed' (rocks and pebbles)



C: Rain Garden on Slope



**Plant List:**

\*Please note: If plants pictured are not available, a plant with similar size, growth habit and aesthetic character will be substituted.



Penstemon "Margarita"  
Margarita Beardtongue



Chrysactinia mexicana  
Damianita



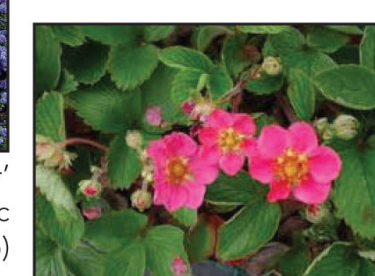
Agave vilmoriniana  
Octopus Agave  
(Accent)



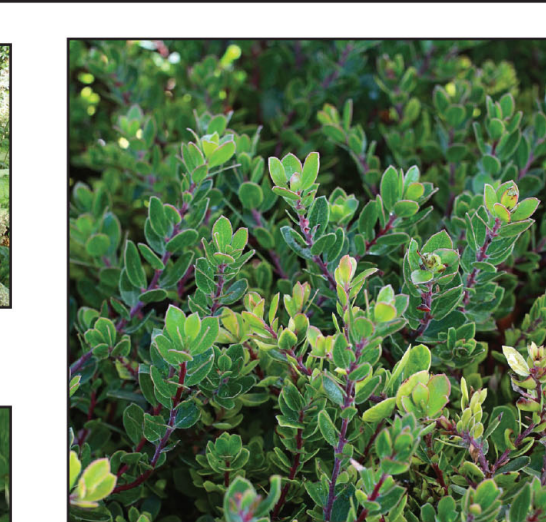
Ceanothus 'Dark Star'  
Dark Star California Lilac  
(Flowering, Evergreen shrub)



Heuchera maxima  
Alum Root



Fragaria "Pink"  
Wild Strawberry



Arctostaphylos 'Greensphere'  
Greensphere Manzanita  
(Evergreen ground cover)



Salvia greggii 'Lavender Rose'  
Lavender Rose Autumn Sage  
(Flowering subshrub)



Baccharis pilularis 'Pigeon Point'  
Pigeon Point Coyote Bush  
(Low evergreen groundcover)



Oenothera 'Rosea'  
Mexican Evening Primrose



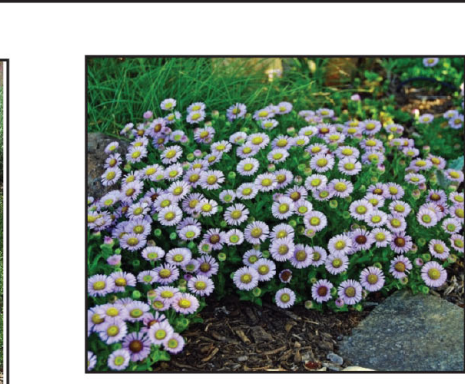
Lobelia laxiflora  
Mexican Lobelia  
(Subshrub, long flowering,  
hummingbirds)



Satureja chandleri  
San Miguel Savory  
(Groundcover,  
fragrant)



Leymus 'Canyon Prince'  
Canyon Prince Wild Rye  
(Ornamental Grass)



Erigeron glaucus  
Seaside Daisy  
(Flowering perennial)



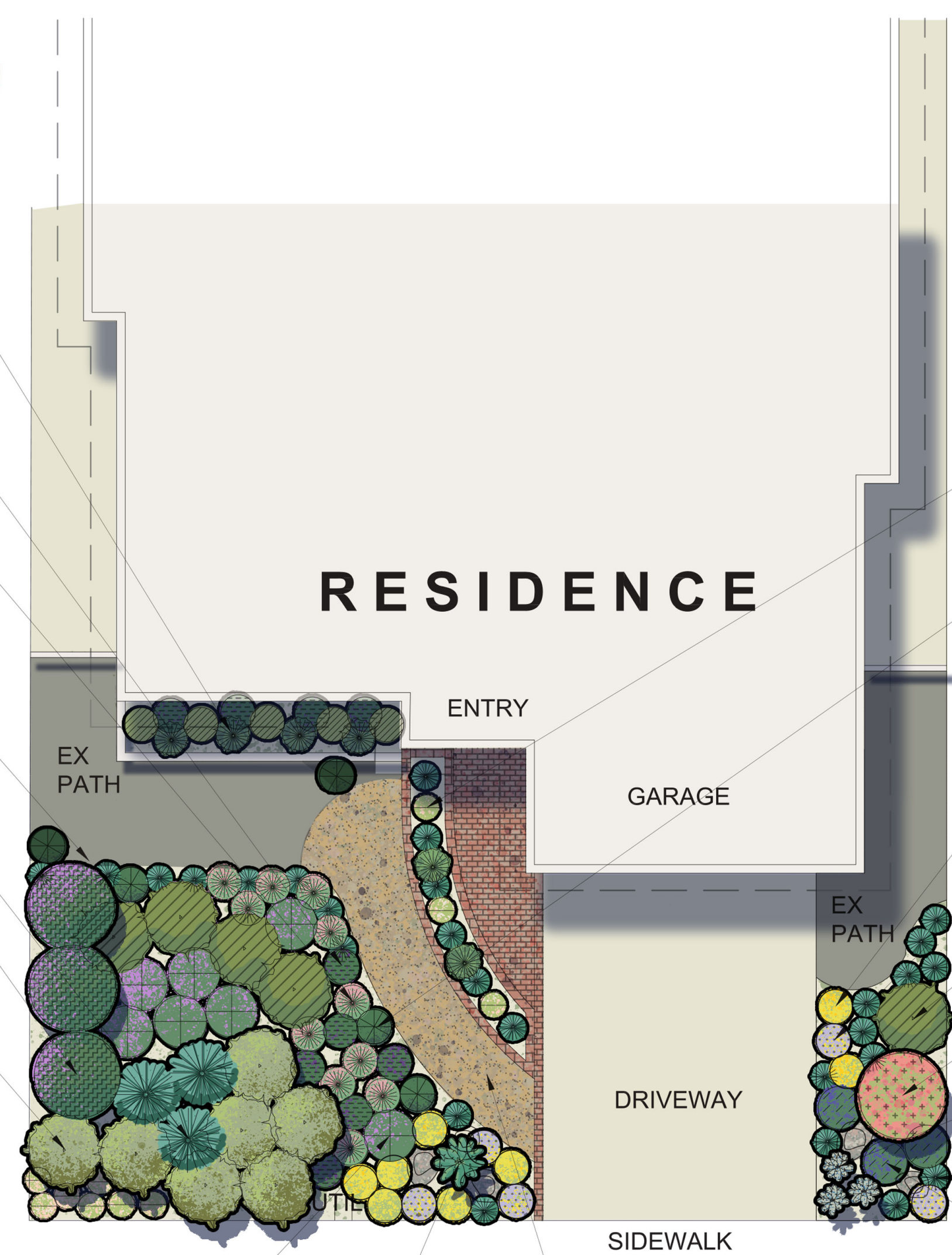
Iris douglasiana  
Douglas Iris  
(Spring Flowering Perennial)



**Coastal Zone Garden - Laguna Niguel, CA**  
Full Sun/Part Shade/Full Shade in Sunset Zones 22, 24

This garden is designed to thrive in Southern California communities where the typical coastal influence is not felt on a daily basis. This garden will feature great diversity in plant types and seasonal flowers, all of which will attract birds, butterflies, hummingbirds and beneficial pollinators. It will be completely drought tolerant and self-sustaining once established. This garden embraces the essence of our Southern California look with boulders, a pea gravel swale and contouring the land to allow rainwater to replenish the soil.

Your new Garden will offer many possibilities for future fine tuning as you add more details and personality into the design. There are dozens of wonderful plants that can be used in containers and in the garden to complement in this basic intermediate design and we encourage you to include more variety as your garden matures.



SATUREJA CHANDLERI  
SAN MIGUEL SAVORY, 6@1G

IRIS DOUGLASIANA  
DOUGLAS IRIS (PURPLE)  
10@1G

HEUCHERA MAXIMA  
ISLAND ALUM ROOT  
11@1G

ALL EX SHRUBS TO  
REMAIN

LEYMUS 'CANYON PRINCE'  
CANYON PRINCE WILD RYE  
3@1G

CEANOTHUS 'DARK STAR'  
DARK STAR CALIFORNIA LILAC  
3@5G

ARCTOSTAPHYLOS 'GREENSPHERE'  
GREENSPHERE MANZANITA  
(CARMEL SUR OK) 7@5G

SALVIA GREGGII 'LAVENDER ROSE'  
LAVENDER ROSE AUTUMN SAGE  
7@1G

AGAVE VILMORINIANA  
OCTOPUS AGAVE  
1@1G

OENOTHERA 'ROSEA'  
MEXICAN EVENING PRIMROSE  
10@4"

FRAGARIA VESCA  
WOODLAND STRAWBERRY  
5@4"

CHRYSACTINIA MEXICANA  
DAMIANITA  
8@1G

ERIGERON GLAUCA  
SEASIDE DAISY  
5@1G

BACCHARIS 'PIGEON POINT'  
PIGEON POINT COYOTE BUSH  
5@1G

LOBELIA LAXIFLORA  
MEXICAN LOBELIA  
1@1G

MANGAVE MOONGLOW  
3@1G (DUDLEYA EDULIS OK)

FESTUCA 'SISKIYOU BLUE'  
SISKIYOU BLUE FESCUE  
27@1G

PENSTEMON 'MARGARITA'  
MARGARITA PENSTEMON  
3@1G

Boulders  
Shades of tan, gray, taupe



Decomposed granite path  
Shades of gold



**California Native Garden** Congratulations! You are about to embark upon a fun, rewarding and ultimately important journey. The conversion of your lawn to a sustainable native garden. You are now part of a growing community of homeowners and garden-lovers returning a sense of place to the front and backyards of urban and suburban Southern California. Welcome home.

**ADDING PERSONALITY TO YOUR GARDEN:**

As Your Garden Grows...you will want to add personality and your own creative touch to your garden. Don't be afraid to experiment with containers, birdbaths, sculpture and other features to add your own unique touch to your garden. While the elements below are not included in your kit, they are all readily available throughout Southern California and beyond.



CONTAINERS

Decorative Rain Barrel



OUTDOOR ART

Rain Chain

Partner With Nature! Installing rain barrels or creating a swale in your garden stores rainwater for your native plants to use. Consider incorporating these elements of sustainability into your new garden.



Rain Chain



Landscape boulder in natural shades of tan, gray, taupe

RAINWATER CAPTURE, RAIN CHAINS and SWALES