

Sustainable Elements

What is contouring for rain?

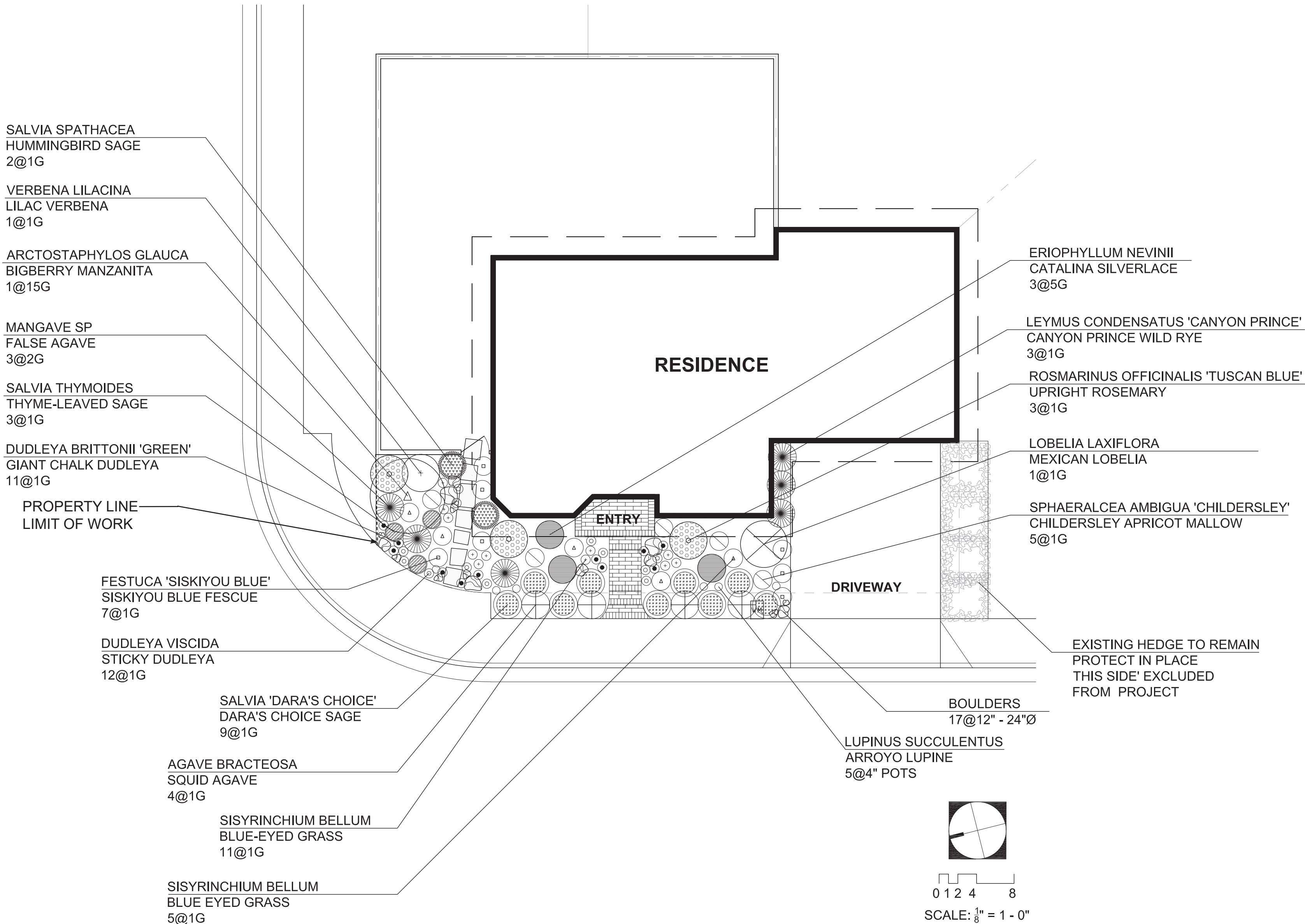
Your garden will be contoured to INFILTRATE rainfall. The area will be lightly graded to infi ltrate water into the planted areas and eliminate runoff from the landscape surface to the street. Over time, the plants may grow through and around the contours, but they will still function to slow rainfall and runoff. The purpose of contouring for rainfall is to allow soil to cleanse water as it pass-es through as groundwater. Water allowed to run off our landscapes and down our streets to the ocean creates dirty outfl ows and polluted beaches.

A native plant is one that has inhabited our region since before settlers arrived. It is a plant that co-evolved with our butterfli es, insects, amphibians and birds. Life in California depends on na-tive plants in ways that exotic plants from far off continents can't replace. For example, birds raising their young feed them the insects that evolved with our native plants. For foraging for ber-ries and nectar they need plants they recognize as home. Even the benefi cial microscopic soil organisms helping to stabi-lize our soil, stopping erosion, holding it in place and cleansing water of pollutants before it moves via underground aquifers to the ocean, evolved with the plants that have been here for millenia. Your garden will have beautiful fl owers, fragrance, ornamental forms and biodiversity. The plants have been chosen for their 'garden-worthy' habits. Your garden will infi ltrate water to replenish groundwater and clean our oceans. It will be more than a beautiful garden for you. It will be a healing garden for your neighborhood, for our watershed and our region. Thank you for allowing us to help with your NatureScape!



Plant List:

\*Please note: If plants pictured are not available, a plant with similar size, growthhabit and aesthetic character will be substituted.



California Native Garden

Congratulations! You are about to embark upon a fun, rewarding and ultimately import-ant journey. The conversion of your lawn to a sustainable native garden. You are now part of a growing community of homeowners and garden-lovers returning a sense of place to the front and backyards of urban and suburban Southern California. Welcome home.

ADDING PERSONALITY TO YOUR GARDEN:

As Your Garden Grows...you will want to add personality and your own creative touch to your garden. Don't be afraid to experiment with containers, birdbaths, sculpture and other fea-tures to add your own unique touch to your garden. While the elements below are not included in your kit, they are all readily available throughout Southern California and beyond.



Decorative Rain Barrel



Rain Chain

CONTAINERS, OUTDOOR ART, STATUARY FOUNTAINS

Partner With Nature! Installing rain barrels or creating a swale in your garden stores rainwater for your native plants to use. Consider incorporating these elements of sustainability into your new garden.



Landscape boulder in natural shades of tan, gray, taupe



Salvia spathacea  
Hummingbird Sage



Verbena lilacina  
Lilac Verbena



Arctostaphylos glauca  
Big Berry Manzanita



Agave bracteosa  
Squid Agave



Salvia thymoides  
Thyme-Leaved Sage



Dudleya brittonii 'Green'  
Giant Chalk Dudleya



Leymus condensatus 'Canyon Prince'  
Canyon Prince Wild Rye



Festuca 'Siskiyou Blue'



Sphaeralcea ambigua  
Apricot Mallow



Abutilon palmeri  
Indian Mallow



Penstemon 'Margarita Bop'  
Foothill Penstemon



Dudleya viscida  
Sticky Dudleya



Salvia 'Dara's Choice'  
Dara's Choice Sage



Lobelia laxiflora  
Mexican Lobelia



Mangave 'Moonglow'



Sisyrinchium bellum  
Blue-Eyed Grass



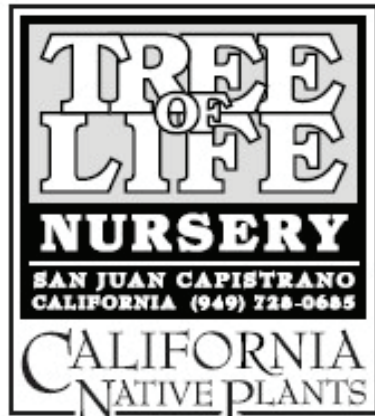
Rosmarinus officinalis 'Tuscan Blue'  
Upright Rosemary



Eriophyllum nevinii  
Catalina Silverlace



Lupinus succulentus  
Arroyo Lupine



Coastal Garden - Aliso Viejo  
Full Sun/Part Shade in Sunset Zones 22, 24

This garden is designed to complement the natural features of coastal Southern California. It will be completely drought tolerant and self-sustaining once established (1 to 3 years). Local species as well as native plant varieties from coastal environments have been selected. Permeable hardscape surfaces and contouring the land allows rainwater to replenish the soil.

This garden is diverse! It will come to life with different plant species and seasonal flowers, all of which will attract birds, butterflies, hummingbirds and beneficial pollinators.

Your new Coastal Garden will offer many possibilities for future fine tuning as you add more details and personality into the design. There are dozens of wonderful plants that can be used in this basic coastal design and we encourage you to include more variety as your garden matures.



JODIE COOK  
QWEL WWLP ASLA SITES AP  
LANDSCAPE DESIGN  
www.jodiecookdesign.com  
949-291-8003