

SUSTAINABLE ELEMENTS:

WHAT IS CONTOURING FOR RAIN? WHAT IS A SWALE?

Your garden will feature a swale to INFILTRATE rainfall. This is an area that is lightly graded to infiltrate water into the planted areas and eliminate runoff from the landscape surface to the street.

Over time, the plants may grow over the sides of the swale, but it will still function.

The purpose of a swale is to allow soil to cleanse water as it passes through as groundwater. Water allowed to run off our landscapes and down our streets to the ocean creates dirty outflows and polluted beaches. Healthy garden soil has the ability to filter, cleanse and purify land based pollution before it gets to



Landscape contoured for rain infiltration

Paths/Boulders:

Decomposed granite path
Shades of gold



Boulders
Shades of tan, gray, taupe



Plant List:

*Please note: If plants pictured are not available, a plant with similar size, growth habit and aesthetic character will be substituted.



Baccharis sp.
Coyote Bush
(Evergreen ground cover)



Eriogonum gigantea
St. Catherines Lace
(Flowering shrub, butterfly habitat)



Encelia californica
Coast Sunflower

ERIOGONUM FASCICULATUM 'DANA POINT'
DANA POINT BUCKWHEAT
6@1G

PATHWAY BARK SURFACE
423 SF (EXCL. VEG BED AREA)

GALVEZIA SPECIOSA 'FIRECRACKER'
FIRECRACKER ISLAND SNAPDRAGON
6@1G

MIMULUS AURANTIACUS
BUSH MONKEYFLOWER
8@1G

ERIOGONUM GIGANTEA
ST. CATHERINES LACE 2@15G

ASCLEPIAS FASCICULARIS
NARROW LEAF MILKWEED
18@1G

EXISTING TREE
PROTECT IN PLACE

FRAGARIA CHILOENSIS PINK
HYBRID STRAWBERRY 5@1G

LONICERA SUBSPICATA
SANTA BARBARA HONEYSUCKLE
3@1G

RIBES VIBURNIFOLIUM
CATALINA CURRANT
8@5G

ARCTOSTAPHYLOS 'HOWARD MCMINN'
MCMINN MANZANITA 5@5G

CAREX TUMILICOLA
FOOTHILL SEDGE
13@1G

BOULDERS, SM/MED/LG
29@12" - 24"Ø

MUHLENBERGIA RIGENS
DEERGRASS
7@1G

ERIOPHYLLUM CONFERTIFLORUM
GOLDEN YARROW
14@1G

SALVIA 'WINIFRED GILMAN'
WINIFRED GILMAN CLEVELAND SAGE
5@5G

BACCHARIS PILULARIS 'TWIN PEAKS'
TWIN PEAKS DWARF COYOTE BUSH
6@1G

CALYLOPHUS HARTWEGII
HARTWEG'S SUNDROPS
8@1G

FOUNTAIN
BY OWNER

RAISED BEDS FOR VEG
BY OWNER

RESIDENCE

CHILOPSIS LINEARIS 'BUBBA'
BUBBA DESERT WILLOW
1@15G

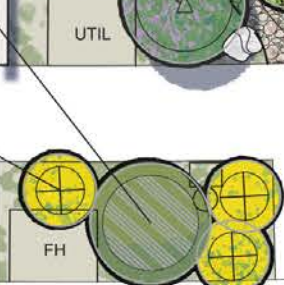
HEUCHERA MAXIMA
ISLAND ALUMROOT
5@1G

MELAMPODIUM LEUCANTHUM
BLACKFOOT DAISY
7@1G

DENDROMECON HARTFORDII
ISLAND BUSH POPPY
1@5G

DUDLEYA ORCUTTII.
AND
DUDLEYA VIRENS
6@1G EACH (16TTL)

ARTEMISIA 'DAVIDS CHOICE'
DAVIDS CHOICE SAGEBRUSH
3@1G



EXISTING TREE
PROTECT IN PLACE

VERBENA LILACINA 'DE LA MINA'
DE LA MINA LILAC VERBENA
7@1G

EXISTING TREE
PROTECT IN PLACE

ARCTOSTAPHYLOS 'POINT REYES'
POINT REYES MANZANITA 3@1G

EXISTING HEDGE/TREES
PROTECT IN PLACE

SATUREJA CHANDLERI
SHRUBBY YERBA BUENA
10@1G

CEANOTHUS 'DARK STAR'
CONCHA CALIFORNIA LILAC
2@5G

TRICHOSTEMA LANATUM
WOOLY BLUE CURLS
3@1G

CERCIS OCCIDENTALIS
WESTERN REDBUD
1@15

PATH
DG 102 SF

ARISTIDA PURPUREA
PURPLE THREE AWN
3@1G

ENCELIA CALIFORNICA
BUSH SUNFLOWER
2@1G

DRY CREEK BED, 2@140 SF
3" - 6"Ø ROCK

AGAVE SHAWII SPP. GOLDMANIANA
GOLDMANIANA MESCAL
4@1G

EXISTING HEDGE
PROTECT IN PLACE

ERIOGONUM FASCICULATUM 'WARRINER LYTLE'
WARRINER LYTLE CA BUCKWHEAT
11@1G

SPHAERALCEA SULPHUREA
GUADALUPE ISLAND GLOBEMALLOW
5@5G

ARTEMISIA CALIFORNIA 'MONTARA'
MONTARA SAGEBRUSH
2@1G



California Native Garden Congratulations! You are about to embark upon a fun, rewarding and ultimately important journey. The conversion of your lawn to a sustainable native garden. You are now part of a growing community of homeowners and garden-lovers returning a sense of place to the front and backyards of urban and suburban Southern California. Welcome home.

ADDING PERSONALITY TO YOUR GARDEN:

As Your Garden Grows...you will want to add personality and your own creative touch to your garden. Don't be afraid to experiment with containers, birdbaths, sculpture and other features to add your own unique touch to your garden. While the elements below are not included in your kit, they are all readily available throughout Southern California and beyond.



BIRDBATH



OUTDOOR ART

Partner With Nature! Installing rain barrels or creating a swale in your garden stores rainwater for your native plants to use. Consider incorporating these elements of sustainability into your new garden.



Decorative Rain Barrel



Rain Chain



Permeable Paving (3" gaps for plants
1.5" gaps for birds eye gravel or dg fill)

RAINWATER CAPTURE, RAIN CHAINS and SWALES



Cercis occidentalis
Western Redbud
(Small flowering tree, deciduous, edible flowers, nitrogen fixing to improve soil)



Fragaria chiloensis
Beach Strawberry
(Groundcover)



Arctostaphylos H. McMinn
McMinn Manzanita
(Evergreen shrub, habitat)



Dudleya pulverulenta
Chalk Live Forever



Calylophus hartwegii
Sundrops
(Flowering perennial)



Ribes viburnifolium
Catalina Perfume



Salvia clevelandii
'Winnifred Gilman'
(Flowering perennial
Hummingbirds,
butterflies)



Eriophyllum confertiflorum
Golden Yarrow



Artemisia 'Montara'
Montara Sagebrush
(Evergreen shrub, low/mounding)



Eriogonum fasciculatum
'Warriner Lytle'
California Buckwheat
(Groundcover form, butterflies)



Encelia californica
Coast Sunflower



Satureja chandleri
San Miguel Savory



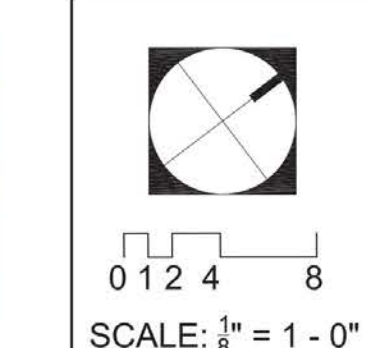
Aristida purpurea
Purple Three Awn
(Ornamental Grass)



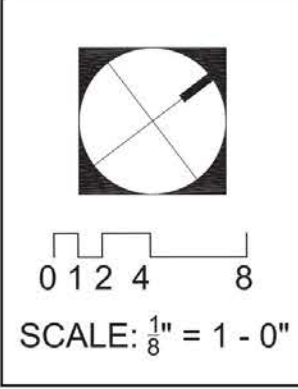
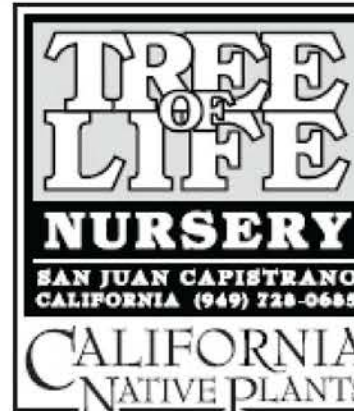
Verbena lilacina
Lilac Verbena
(Fragrant)



Agave shawii ssp.
Goldmaniana
Goldmaniana Mescal



Heuchera sp.
Coral Bells



SCALE: 1/8" = 1'-0"



Coastal Zone Garden - Laguna Niguel, CA
Full Sun/Part Sun in Sunset Zones 22, 24

This garden is designed to thrive in Southern California communities where the typical coastal influence is not felt on a daily basis. This garden will feature great diversity in plant types and seasonal flowers, all of which will attract birds, butterflies, hummingbirds and beneficial pollinators. It will be completely drought tolerant and self-sustaining once established. This garden embraces the essence of our Southern California look with boulders, a pea gravel swale and contouring the land to allow rainwater to replenish the soil.

Your new Garden will offer many possibilities for future fine tuning as you add more details and personality into the design. There are dozens of wonderful plants that can be used in containers and in the garden to complement in this basic intermediate design and we encourage you to include more variety as your garden matures.

