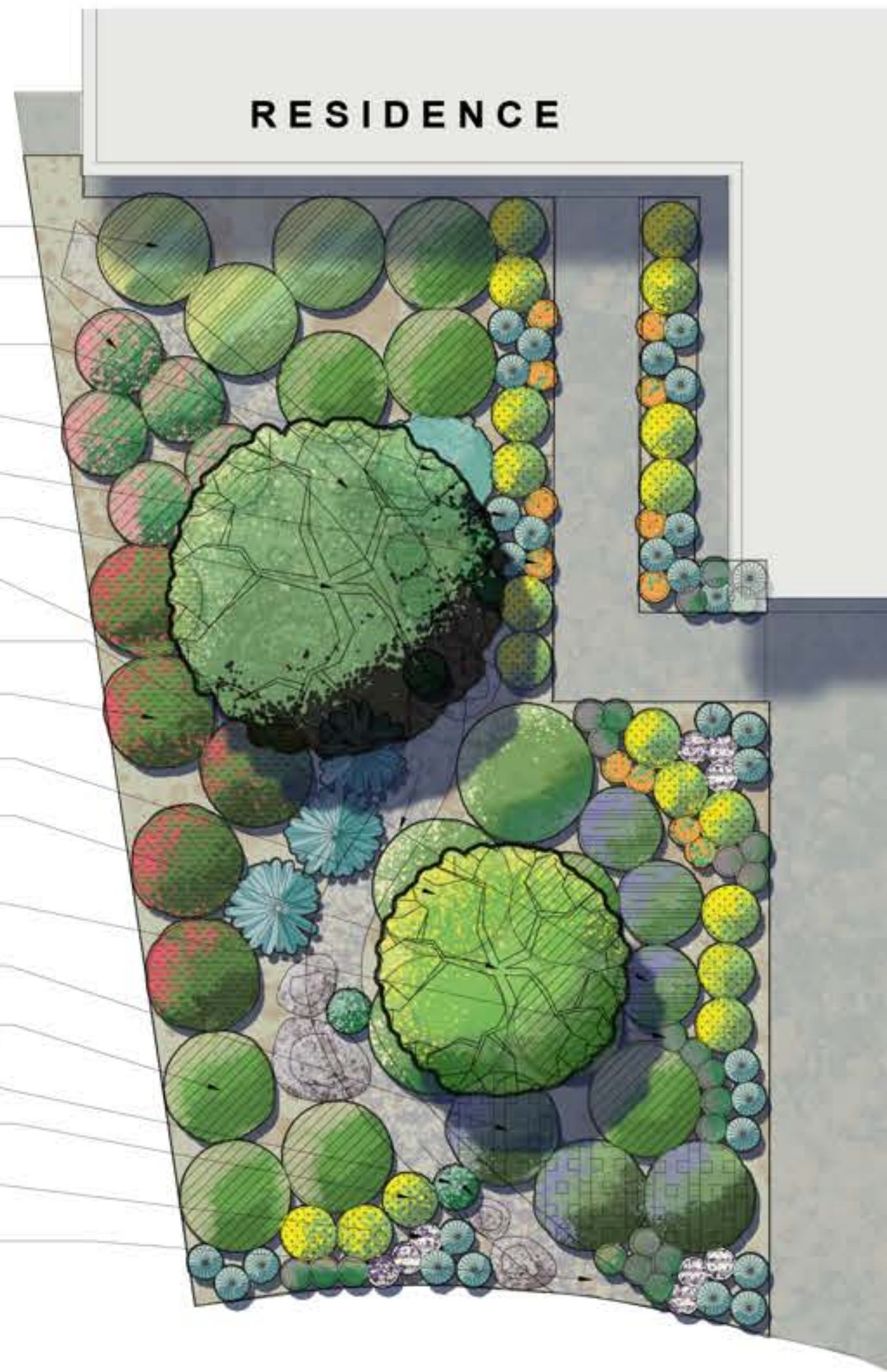




Plant List:

- Sphaeralcea sulphurea
Guadalupe Island Globe Mallow 3@5G
- Guara linheimeri
Guara 5@1G
- Dasyliion wheeleri
Desert Spoon 1@5G
- Festuca 'Siskiyou Blue'
Siskiyou Blue Fescue 29@1G
- Eschscholzia californica
California Poppy or similar 12@4"
- Lyonothamnus floribundus asplenifolius
Catalina Ironwood 1@15G
- Leymus 'Canyon Prince'
Canyon Prince Wild Rye 3@5G
- Verbena lilacina dela mina
Lilac Verbena 3@1G
- Galvezia 'Firecracker'
Island Bush Snapdragon 5@5G
- Baccharis Pigeon Point'
Prostrate Coyote Bush 3@1G
- Senna bicapsularis
Winter Cassia 1@ 15G
- Sisyrinchium bellum
Blue-eyed Grass 33@ 1G
- Salvia 'Skylark'
Skylark Sage 3@1G
- Eriogonum fasciculatum groundcover
Groundcover California Buckwheat 9@1G
- Juncus 'Quartz Creek'
Soft Rush 5@ 1G
- Chrysactinia mexicanum
Damianita 19@1G
- Wildflowers
Five-Spot or similar 9@ 4"
- Swale
4" deep, 12"-18" wide, 6" basins
to collect, infiltrate and redirect
existing roof runoff



Eriogonum fasciculatum groundcover
California Buckwheat



Festuca 'Siskiyou Blue'
Siskiyou Blue Fescue



Baccharis "Pigeon Point"
Prostrate Coyote Bush



Galvezia 'Firecracker'
Island Bush Snapdragon



Chrysactinia mexicana
Damianita



Lyonothamnus floribundus asplenifolius
Catalina Ironwood



Senna bicapsularis
Winter Cassia



Sphaeralcea sulphurea
Guadalupe Island Globe Mallow



Guara linheimeri
Guara



Verbena lilacina 'de la Mina'
Lilac Verbena



Dasyliion wheeleri
Desert Spoon

*Please note: If plants pictured are not available, a plant with similar size, growth habit and aesthetic character will be substituted.



Lyemus 'Canyon Prince'
Canyon Prince Wild Rye



Juncus 'Quartz Creek'
Soft Rush



Salvia 'Skylark'
Skylark Sage



Eschscholzia californica
California Poppy



Wildflowers
Five-spot or similar



Sisyrinchium bellum
Blue-eyed Grass



*Artist Rendering
Your garden may differ.

Coastal Native Garden

Congratulations on your new garden!

You are about to embark upon a fun, rewarding and ultimately important journey - The conversion of your lawn to a sustainable native garden. You will notice that your garden looks and interacts with nature differently than traditional non-native gardens. Birds and butterflies will appear. Chemicals will not be necessary. In caring for your garden, let nature be your guide.

You are now part of a growing community of homeowners and garden-lovers returning a sense of place to the front and backyards of urban and suburban Southern California.

Welcome home.

ADDING PERSONALITY TO YOUR GARDEN:

As Your Garden Grows... you will want to add personality and your own creative touch to your garden. Don't be afraid to experiment with containers, birdbaths, sculpture and other features to add your own unique touch to your garden. While the elements below are not included in your kit, they are all readily available throughout Southern California and beyond.



CONTAINERS



OUTDOOR ART

Partner With Nature! Installing rain barrels or creating a swale in your garden stores rainwater for your native plants to use. Consider incorporating these elements of sustainability into your new garden.



RAINWATER CAPTURE, RAIN CHAINS and SWALES

WHAT IS A SWALE?

A swale or rain garden is designed to hold water in a stable way to slowly deliver it to your garden over a period of time, like a soil sponge. It is both a soil water storage area and a decorative feature for your yard.

Swales and rain gardens can be planted or they can be dry creekbeds featuring boulders, pebbles and cobble stone.

Whichever type of swale or rain garden you have, the idea is to make it flat-bottomed, to use no barrier fabric such as weed fabric, and to have an overflow route that works with existing drainage patterns.

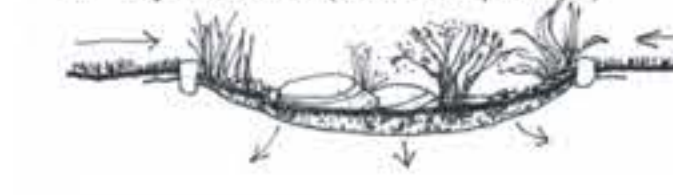
Swales and rain gardens need not be deep. Many are 4" - 6" deep and 2'-3' wide. But they can capture and hold water from a 1" rainfall with ease.

Build your swale or rain garden basin 3' from hard surfaces and 10' from building foundations

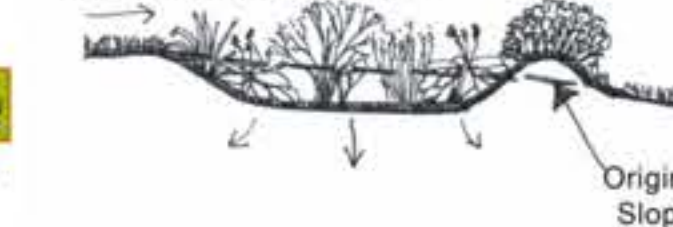
A: Rain Garden (planted)



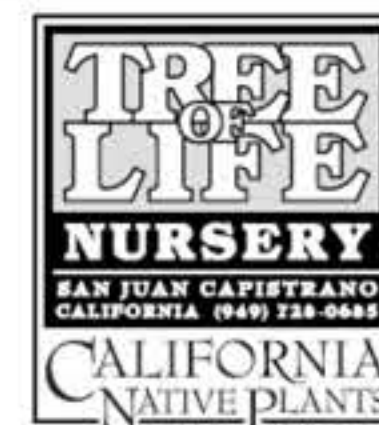
B: 'Dry Creekbed' (rocks and pebbles)



C: Rain Garden on Slope



DIRECT INSTALL TURF REMOVAL



My AVANT Garden
Convert your lawn to a native garden!
Easy to install Lawn Conversion Kits

Coastal Garden - Full Sun in Sunset Zones 22, 24

This garden is designed to compliment the natural features of coastal Southern California. It will be completely drought tolerant and self-sustaining once established. Local species as well as native plant varieties from coastal environments have been selected. Permeable hardscape surfaces and contouring the land allows rainwater to replenish the soil.

This garden is diverse! It will come to life with different plant species and seasonal flowers, all of which will attract birds, butterflies, hummingbirds and beneficial pollinators. Your new Coastal Garden will offer many possibilities for future fine tuning as you add more details and personality into the design. There are dozens of wonderful plants that can be used in this basic coastal design and we encourage you to include more variety as your garden matures.

Page 1
Planting Concept



JODIE COOK
LANDSCAPE DESIGN

MyAvantGarden is a collaboration between Tree of Life Nursery and Jodie Cook Landscape Design