

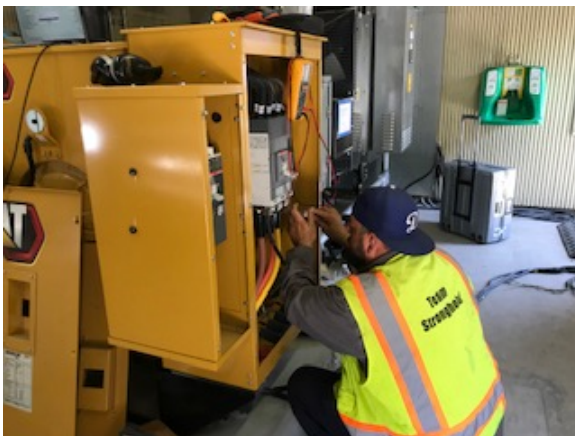
## ALISO CREEK AND SOUTHWING LIFT STATIONS AUXILIARY GENERATOR REPLACEMENTS



Temporary Bypass Operation at Aliso Creek L.S.



Crews Installing ATS Power Monitor at Southwing L.S.



Connection of Load Bank Leads at Aliso Creek L.S.

### PROJECT LOCATION:

Aliso Creek and Southwing Lift Stations.

### PROJECT SCOPE:

Work for this project includes replacing the existing propane emergency generators with new auxiliary diesel generators at both lift stations. The project also includes improvements to fuel piping, fuel storage tanks, ventilation, electrical, controls, and appurtenances.

Construction documents for the project were prepared by Lee & Ro, Inc.

### PROJECT DETAILS:

- Contract Award - 05/04/2020
- Construction Contract - \$1,270,226
- Percentage Constructed - 100%
- Completed - August 2021

### NOTES:

All construction is complete. Notice of completion was filed in August.