

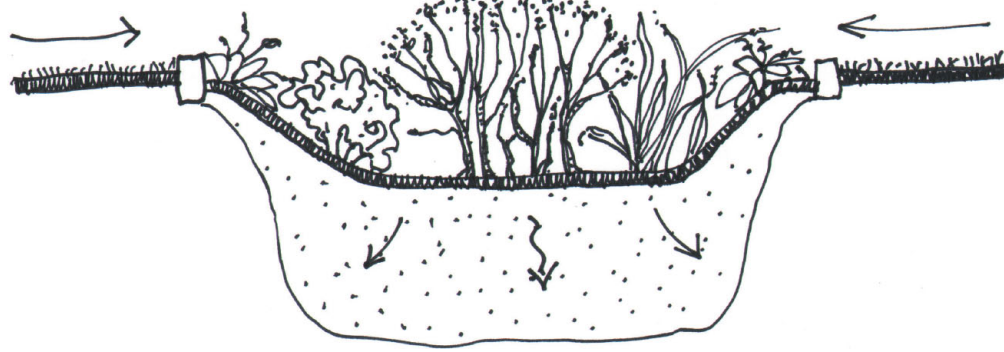
WHAT IS CONTOURING FOR RAIN? WHAT IS A SWALE?

Your garden features a 'dry creekbed' swale. This is an area that is lightly graded to infiltrate water and eliminate runoff from the landscape surface to the street.

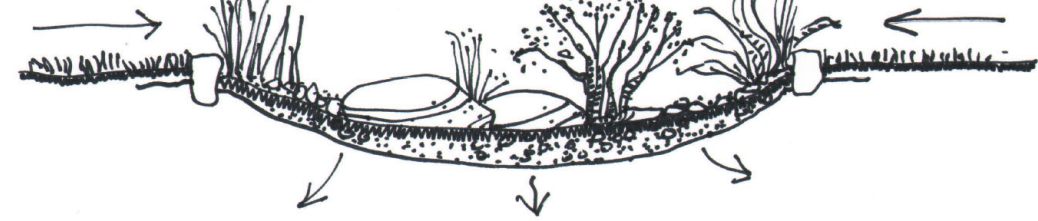
Over time, the plants may grow over the sides of the swale, but it will still function.

The purpose of a swale is to allow soil to cleanse water as it passes through as groundwater. Water allowed to run off our landscapes and down our streets to the ocean creates dirty outflows and polluted beaches. Healthy garden soil has the ability to filter, cleanse and purify land based pollution before it gets to

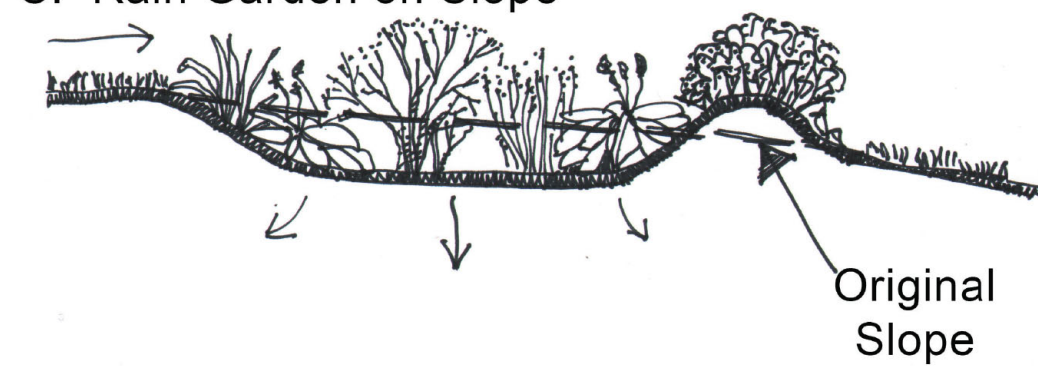
A: Rain Garden (planted)



B: 'Dry Creekbed' (rocks and pebbles)



C: Rain Garden on Slope

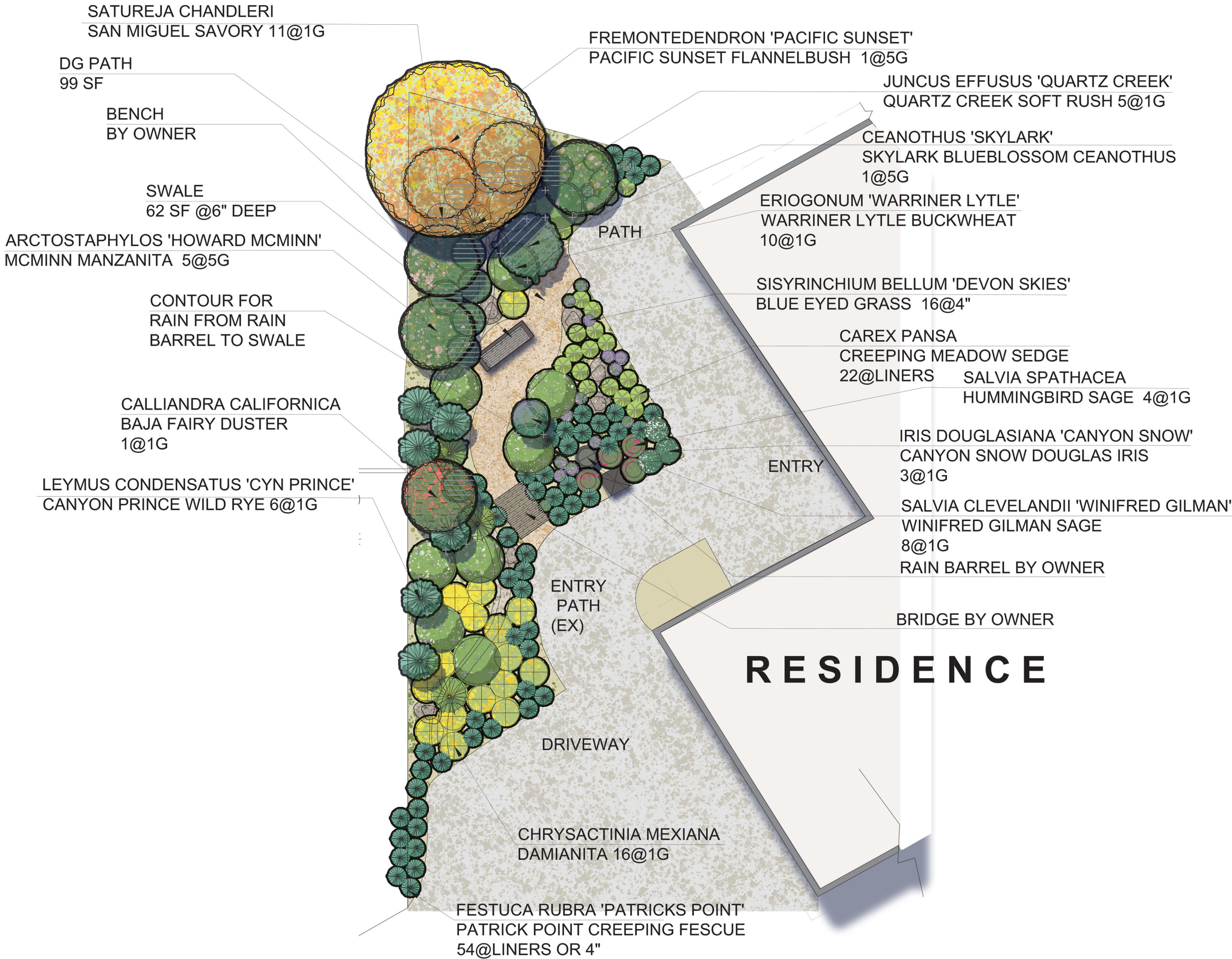


Swales and Rain Gardens are designed to infiltrate water within 48 hours or less. As these plants grow into their mature form the swale may not be as visible but will still function to infiltrate rain and eliminate runoff.

Swales are always designed to direct high stormwater flows toward existing drains.

Plant List:

*Please note: If plants pictured are notavailable, a plant with similar size, growthhabit and aesthetic character will be substituted.



California Native Garden Congratulations! You are about to embark upon a fun, rewarding and ultimately important journey. The conversion of your lawn to a sustainable native garden. You are now part of a growing community of homeowners and garden-lovers returning a sense of place to the front and backyards of urban and suburban Southern California. Welcome home.

ADDING PERSONALITY TO YOUR GARDEN:

As Your Garden Grows...you will want to add personality and your own creative touch to your garden. Don't be afraid to experiment with containers, birdbaths, sculpture and other features to add your own unique touch to your garden. While the elements below are not included in your kit, they are all readily available throughout Southern California and beyond.



CONTAINERS



OUTDOOR ART

Partner With Nature! Installing rain barrels or creating a swale in your garden stores rainwater for your native plants to use. Consider incorporating these elements of sustainability into your new garden.



Decorative Rain Barrel



Rain Chain



Landscape boulder in natural shades of tan, gray, taupe

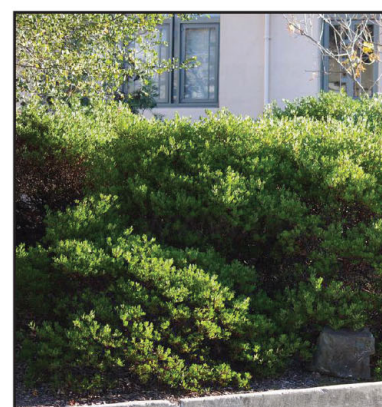
RAINWATER CAPTURE , RAIN CHAINS and SWALES



Festuca rubra 'Patrick's Point'
Patrick's Point Creeping Fescue



Sisyrinchium bellum
Blue Eyed Grass
(Spring Flowering)



Arctostaphylos 'Howard McMinn'
McMinn Manzanita
Winter/Early spring flowering



McMinn Manzanita Flowers
(Hummingbirds, butterflies)



Eriogonum
'Warriner Lytle'
Buckwheat
(Butterfly plant,
Summer flowering,
white)



Salvia clevelandii
'Winifred Gilman'
Winifred Gilman
Cleveland Sage
(Hummingbirds,
butterflies, fragrant,
Spring/summer flowering)



Juncus sp
Rush
Upright accent, filters
swale, assists infiltration



Leymus condensatus 'Canyon Prince'
Canyon Prince Wild Rye
(Ornamental grass)



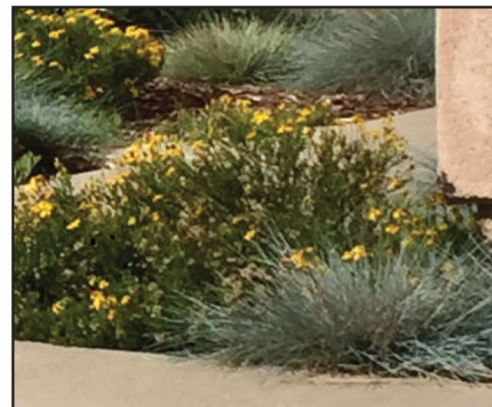
Carex pansa/Dune Sedge
(meadow grass, slow, sink, runoff)



Salvia spathacea
Hummingbird Sage
(Spring Flowering perennia,
Hummingbirds, fragrant)



Ceanothus 'Skylark'
Dark Star California Lilac
(Nitrogen fixing to build heathy
soil, Spring flowering, butterfly
host plant, blue/violet bloom)



Chrysactinia mexicana
Damianita
(with Fescue in photo)
(Prolific flowering in spring/fall)



Fremontedendron 'Pacific Sunset'
Flannelbush
(Spring Flowering)



Fremontedendron
Flowers



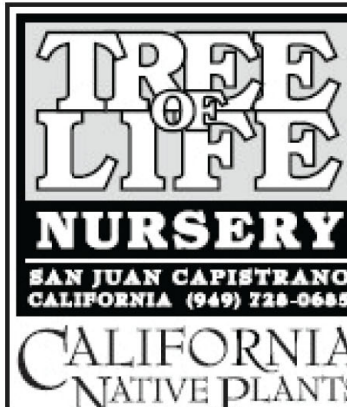
Calliandra californica
Baja Fairy Duster
(Hummingbirds, spring/summer
flowering)



Satureja chandleri
San Miguel Savory
(herb, fragrant)



Iris douglasiana 'Canyon Snow'
Canyon Snow Douglas Iris



Coastal Zone Garden - Laguna Niguel, CA
Full Sun/Part Shade/Full Shade in Sunset Zones 22, 24

This garden is designed to thrive in Southern California communities where the typical coastal influence is not felt on a daily basis. This garden will feature great diversity in plant types and seasonal flowers, all of which will attract birds, butterflies, hummingbirds and beneficial pollinators. It will be completely drought tolerant and self-sustaining once established. This garden embraces the essence of our Southern California look with boulders, a pea gravel swale and contouring the land to allow rainwater to replenish the soil.

Your new Garden will offer many possibilities for future fine tuning as you add more details and personality into the design. There are dozens of wonderful plants that can be used in containers and in the garden to complement in this basic intermediate design and we encourage you to include more variety as your garden matures.



JODIE COOK
QWEL ASLA
WWLP SITES AP
LANDSCAPE DESIGN
www.jodiecookdesign.com
949-291-8003