



moulton niguel water district

Board of Directors
Legislative Affairs Report
January 19, 2017

Public Goods Charge on Water

- Legislature is reviewing ways to assist disadvantaged communities that lack safe drinking water.
- Proposed in 2016 as part of SB 20, the California Water Resiliency Fund.
- Was designed as a permanent statewide tax on water to secure financing for emergency drought relief and water infrastructure projects.



Sen. Fran Pavley, D-Agoura Hills



moulton niguel water district

Potable Reuse & Wastewater Discharge

- In 2016, Senator Hertzberg proposed a ban on discharging treated wastewater to ocean outfalls, requiring that the effluent be recycled. The bill did not proceed.
- In 2017, WaterReuse is sponsoring legislation to establish definitions for commonly used terms related to potable reuse and creating a timeline for state agencies to develop regulations.



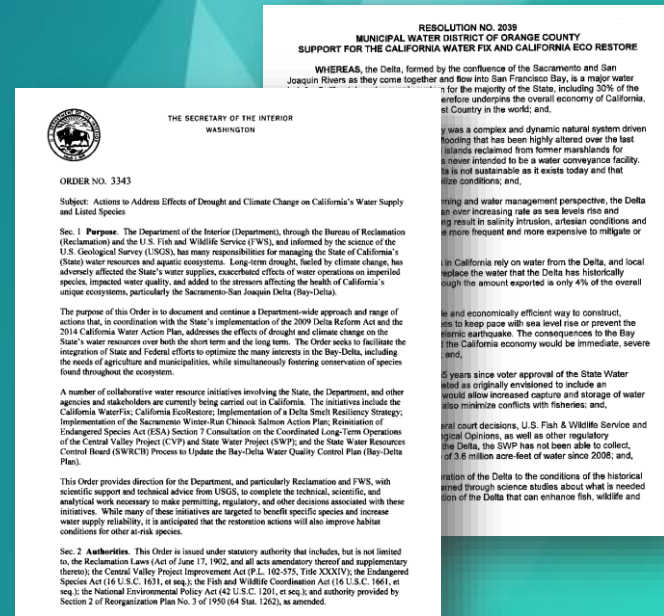
moulton niguel water district

California WaterFix/EcoRestore

- \$15 billion project to restore the San Joaquin Delta and construct twin tunnels that could divert up to 4.9 million acre feet per year.
- Secretary of the Interior prioritized review for Federal permits and Fish and Wildlife Biological opinion.
- Formal Resolution of Support from Municipal Water District of Orange County.

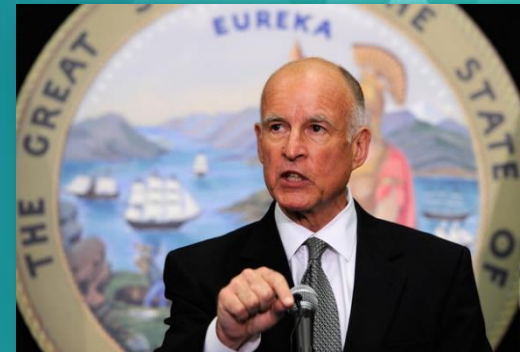
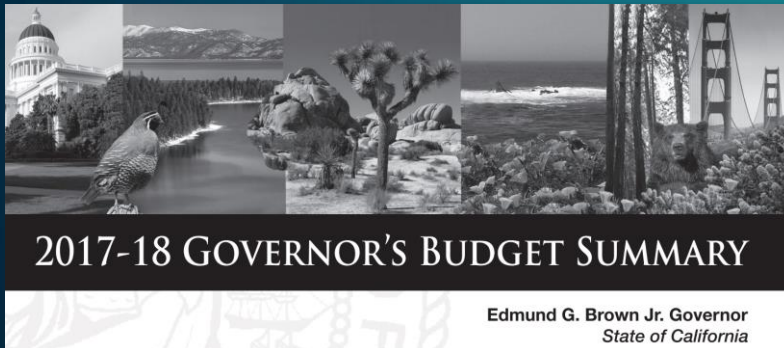


moulton niguel water district



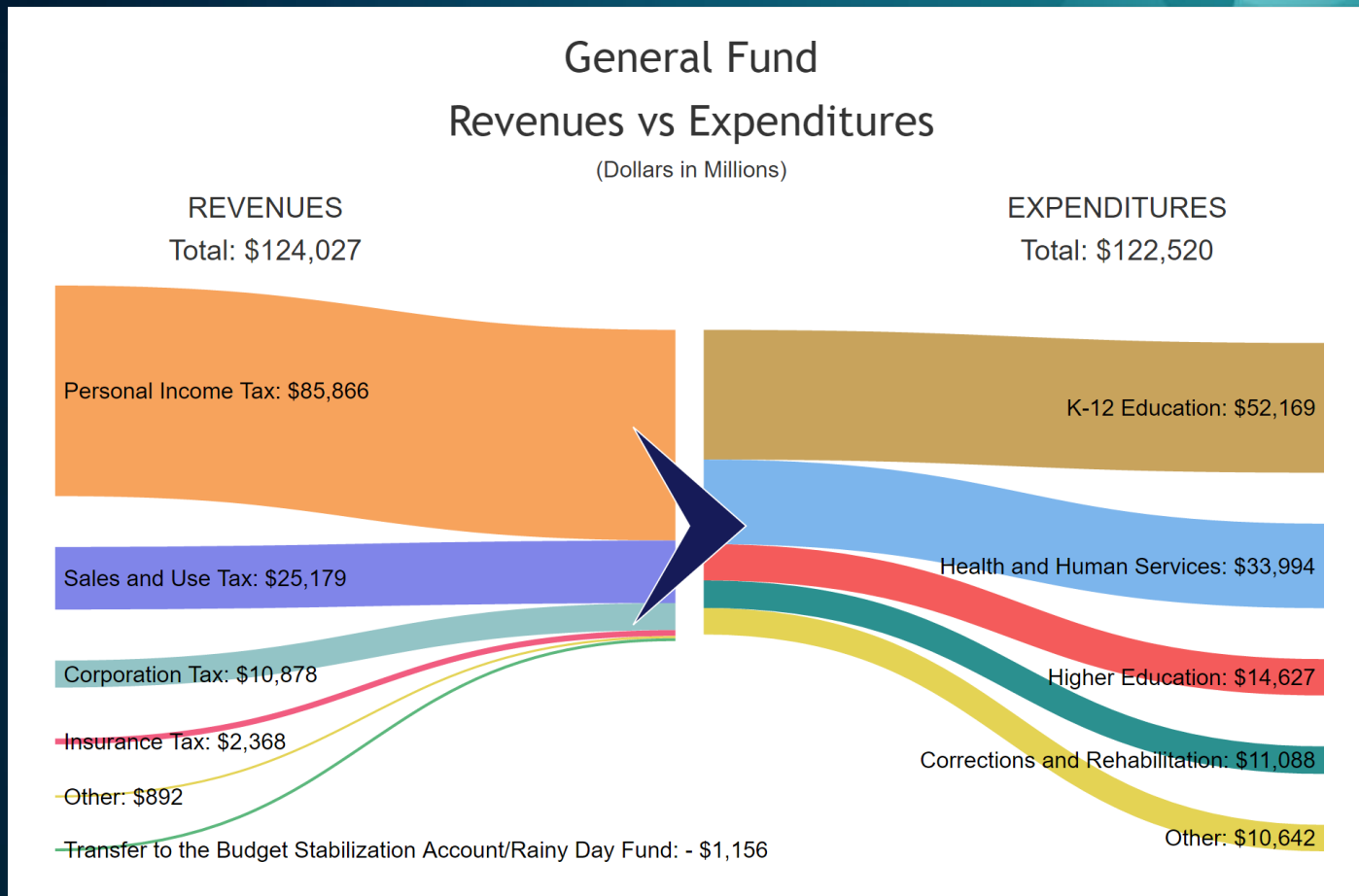
Governor's Budget Proposal

- Proposed on January 10, 2017
- Anticipates a deficit of \$2 billion
- Rolls back previous spending increases, including
 - \$400 million for affordable housing,
 - K-14 spending,
 - middle-class tax credits.
- Accounts for minimum wage increase.
- Includes 5-Year Infrastructure Plan



moulton niguel water district

Governor's Budget Proposal



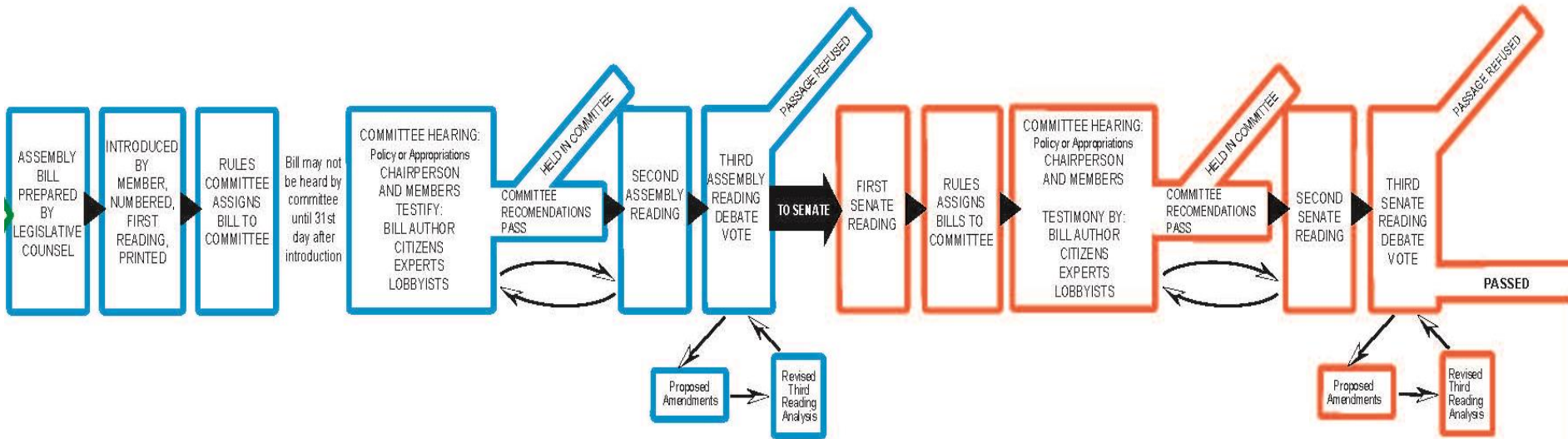
Legislative Process



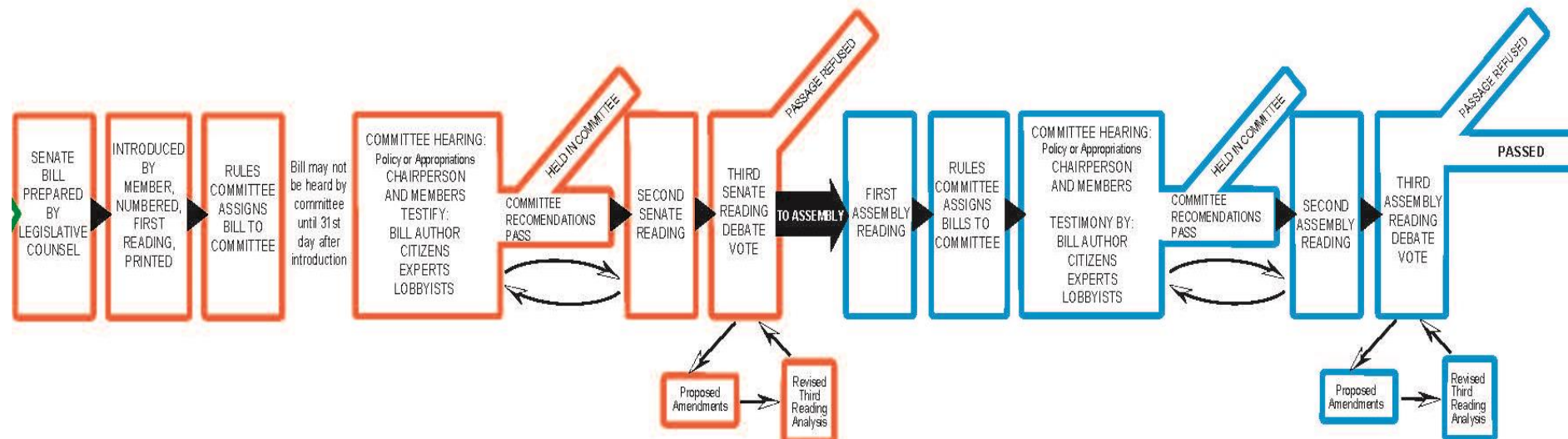
moulton niguel water district

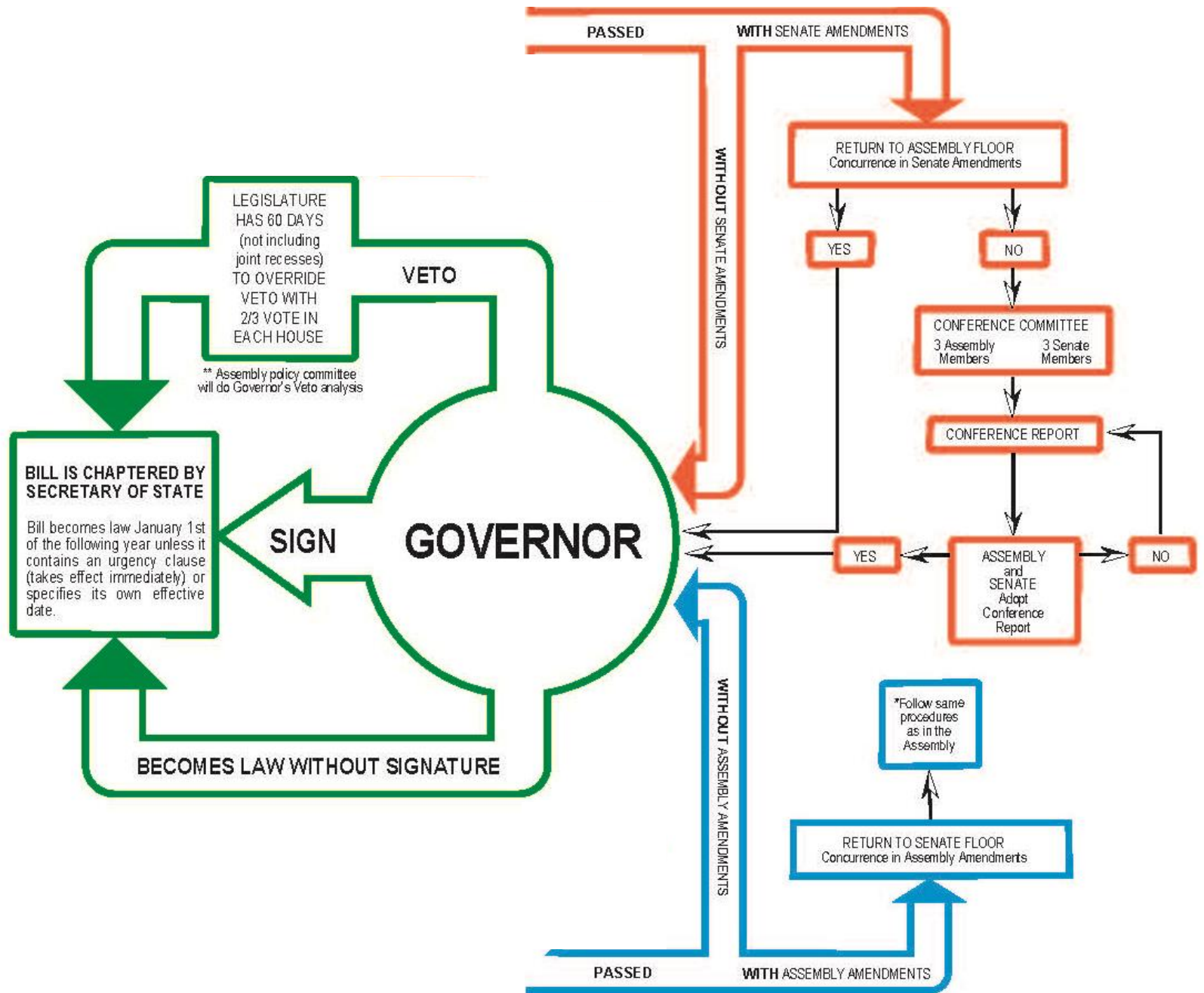
Legislative Affairs Report – January 19, 2017

ASSEMBLY



SENATE





Jake Vollebregt
Director, Regional & Legal Affairs
jvollebregt@mnwd.com
949-448-4072 / 949-339-0402

www.mnwd.com
27500 La Paz Road
Laguna Niguel, CA 92677

FOLLOW US ONLINE!





Board of Directors
Legislative Affairs Report
January 19, 2017

Committees for California's 2017 Legislative Session

Joint Legislative Committees

<u>Joint Committees</u>	<u>Chair</u>
Rules	Asm. Ken Cooley
Arts	TBD
Fairs, Allocation and Classification	TBD
Fisheries and Aquaculture	TBD
Audit	Asm. Al Muratsuchi
Budget	TBD
Emergency Management	Asm. Freddie Rodriguez (Vice Chair)

California State Senate

<u>Senate Standing Committees</u>	<u>Chair</u>
Agriculture	Sen. Cathleen Galgiani
Appropriations	Sen. Ricardo Lara
Banking and Financial Institutions	Sen. Bill Dodd
Budget and Fiscal Review	Sen. Holly Mitchell
Business, Professions and Economic Development	Sen. Jerry Hill
Education	Sen. Benjamin Allen
Elections and Constitutional Amendments	Sen. Henry Stern
Energy, Utilities and Communications	Sen. Ben Hueso
Environmental Quality	Sen. Bob Wieckowski
Ethics	Sen. Ed Hernandez
Governance and Finance	Sen. Mike McGuire
Governmental Organization	Sen. Steven Glazer
Health	Sen. Ed Hernandez
Human Services	Sen. Scott Wiener
Insurance	Sen. Tony Mendoza
Judiciary	Sen. Hannah-Beth Jackson

Legislative Affairs Report
 Committees for California's 2017 Legislative Session
 January 19, 2017
 Page 2 of 3

Labor and Industrial Relations	Sen. Steven Bradford
Natural Resources and Water	Sen. Robert Hertzberg
Public Employment and Retirement	Sen. Richard Pan
Public Safety	Sen. Nancy Skinner
Rules	Sen. Kevin de Leon
Transportation and Housing	Sen. Jim Beall
Veterans Affairs	Sen. Josh Newman

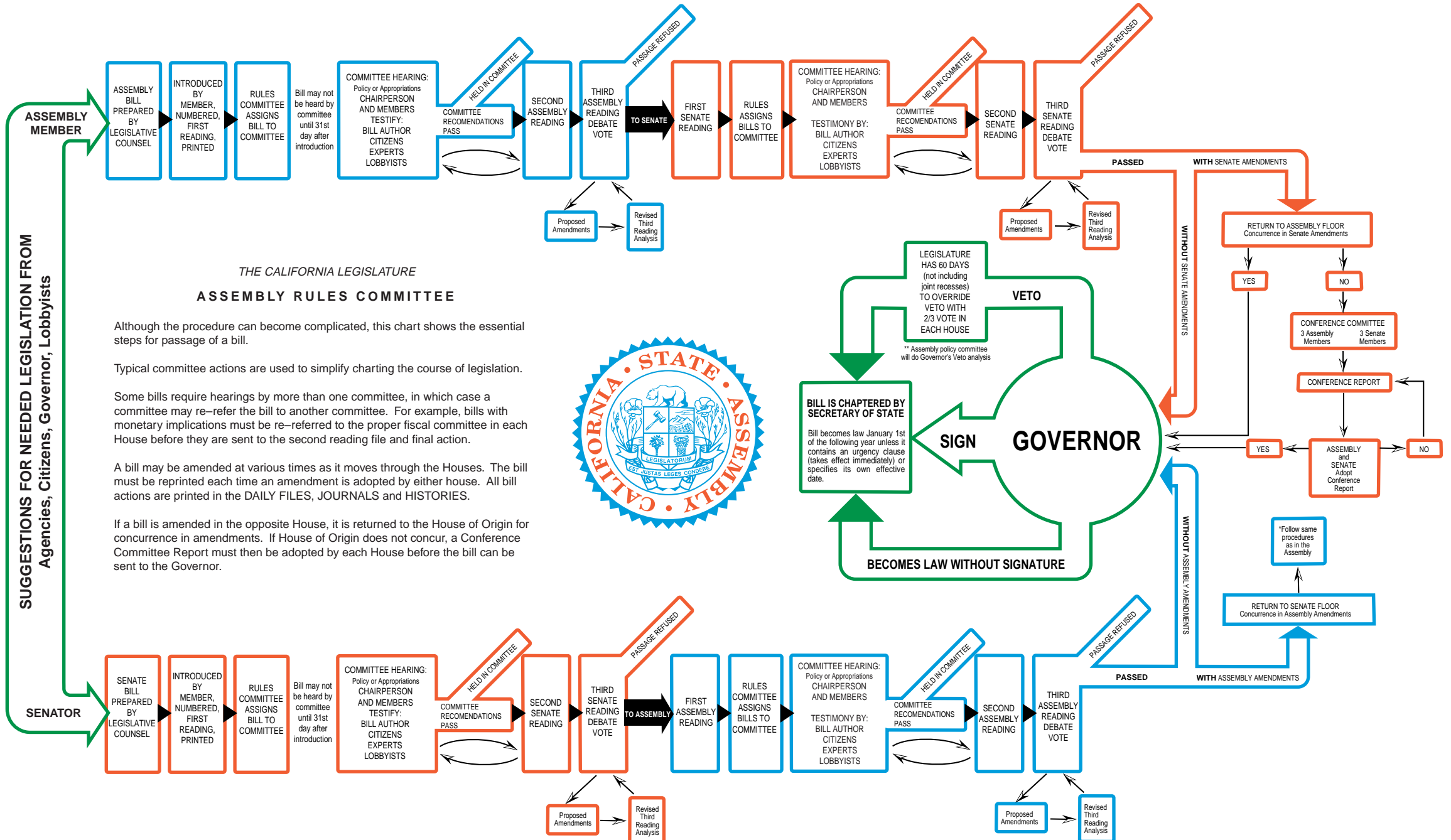
<u>Senate Select Committees</u>	<u>Chair</u>
Aging and Long Term Care	TBD
Asian Pacific Islander Affairs	TBD
Biliteracy and Dual Immersion Programs in California	TBD
California's Wine Industry	TBD
California-Mexico Cooperation	TBD
Children with Special Needs	TBD
Climate Change and AB 32 Implementation	TBD
Defense and Aerospace	TBD
Manufactured Home Communities	TBD
Mental Health	TBD
Missing and Unidentified Persons	TBD
Passenger Rail	TBD
Policy Alignment and State Government Efficiency	TBD
Ports and Goods Movement	TBD
Refugio Oil Spill	TBD
Sacramento-San Joaquin Delta	TBD
Women and Inequality: Strategies to Promote Opportunity	TBD

California State Assembly

<u>Standing Committees</u>	<u>Chair</u>
Accountability and Administrative Review	Asm. Susan Eggman
Aging and Long-Term Care	Asm. Ash Kalra
Agriculture	Asm. Anna Caballero
Appropriations	Asm. Lorena Gonzalez-Fletcher
Arts, Entertainment, Sports, Tourism, and Internet Media	Asm. Kansen Chu
Banking and Finance	Asm. Matthew Dababneh
Budget	Asm. Phil Ting
Business and Professions	Asm. Rudy Salas, Jr.
Communications and Conveyance	Asm. Miguel Santiago
Education	Asm. Patrick O'Donnell
Elections and Redistricting	Asm. Evan Low
Environmental Safety and Toxic Materials	Asm. Bill Quirk
Ethics	Asm. Eloise Gomez Reyes
Governmental Organization	Asm. Adam Gray
Health	Asm. Jim Wood
Higher Education	Asm. Jose Medina
Housing and Community Development	Asm. David Chiu
Human Services	Asm. Blanca Rubio
Insurance	Asm. Tom Daly
Jobs, Economic Development, and the Economy	Asm. Sharon Quirk-Silva
Judiciary	Asm. Mark Stone
Labor and Employment	Asm. Tony Thurmond
Local Government	Asm. Cecilia Aguiar-Curry
Natural Resources	Asm. Cristina Garcia
Privacy and Consumer Protection	Asm. Ed Chau
Public Employees, Retirement, and Social Security	Asm. Freddie Rodriguez
Public Safety	Asm. Reginald Jones-Sawyer, Sr.
Revenue and Taxation	Asm. Sebastian Ridley-Thomas
Rules	Asm. Ken Cooley
Transportation	Asm. Jim Frazier
Utilities and Energy	Asm. Chris Holden
Veterans Affairs	Asm. Jacqui Irwin
Water, Parks, and Wildlife	Asm. Eduardo Garcia

THE LIFE CYCLE OF LEGISLATION

From Idea into Law



THE CALIFORNIA LEGISLATURE

ASSEMBLY RULES COMMITTEE

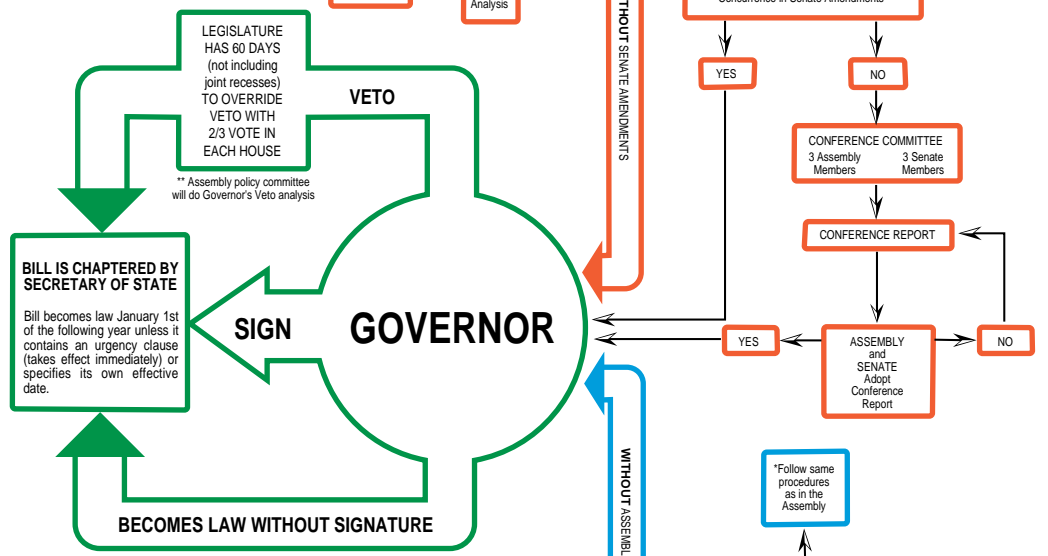
Although the procedure can become complicated, this chart shows the essential steps for passage of a bill.

Typical committee actions are used to simplify charting the course of legislation.

Some bills require hearings by more than one committee, in which case a committee may re-refer the bill to another committee. For example, bills with monetary implications must be re-referred to the proper fiscal committee in each House before they are sent to the second reading file and final action.

A bill may be amended at various times as it moves through the Houses. The bill must be reprinted each time an amendment is adopted by either house. All bill actions are printed in the DAILY FILES, JOURNALS and HISTORIES.

If a bill is amended in the opposite House, it is returned to the House of Origin for concurrence in amendments. If House of Origin does not concur, a Conference Committee Report must then be adopted by each House before the bill can be sent to the Governor.



SUGGESTIONS FOR NEEDED LEGISLATION FROM
 Agencies, Citizens, Governor, Lobbyists
ASSEMBLY MEMBER
SENATOR



moulton niguel water district

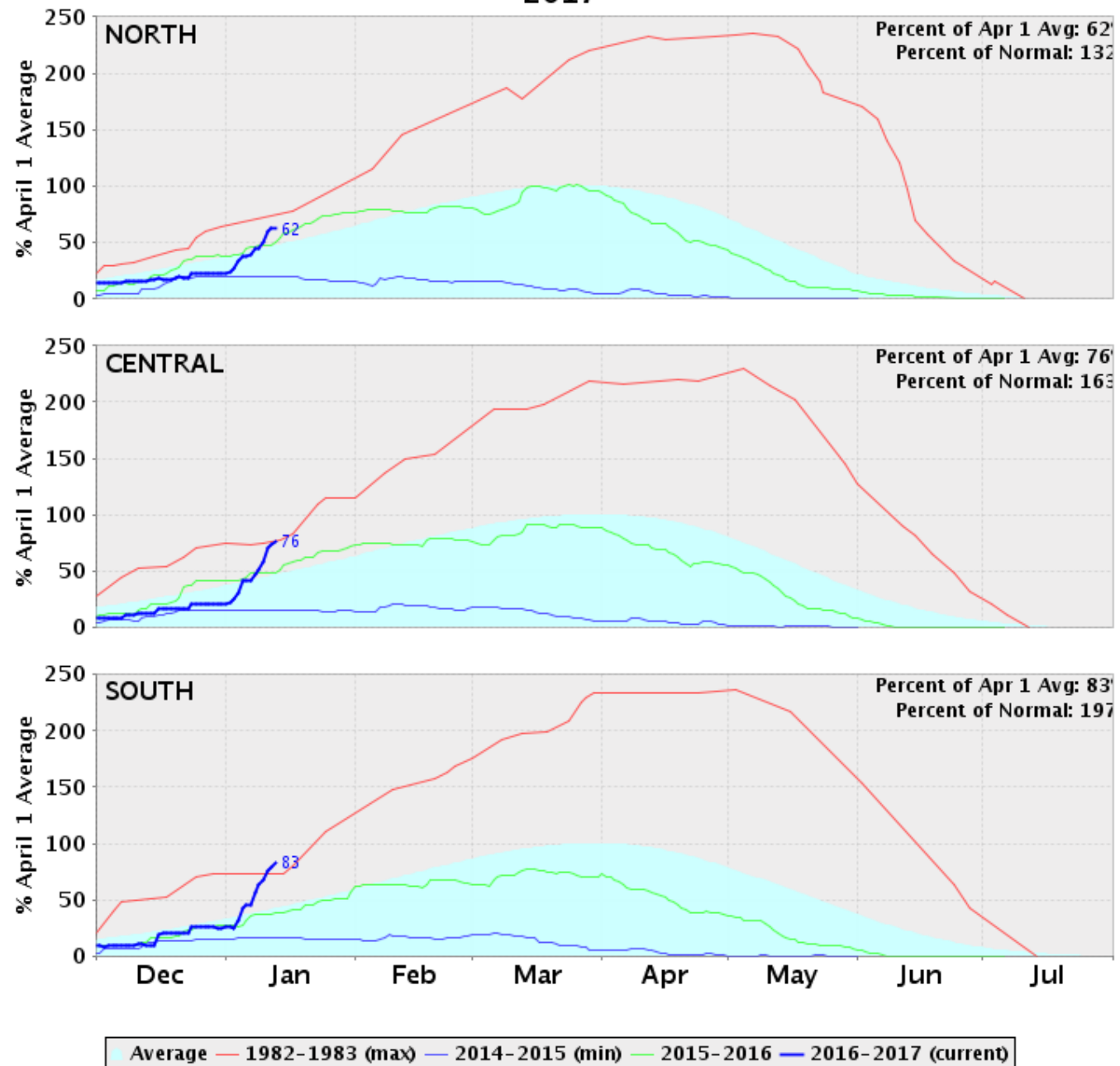
State Water Update

Board Meeting
January 19, 2017

California Precipitation Summary

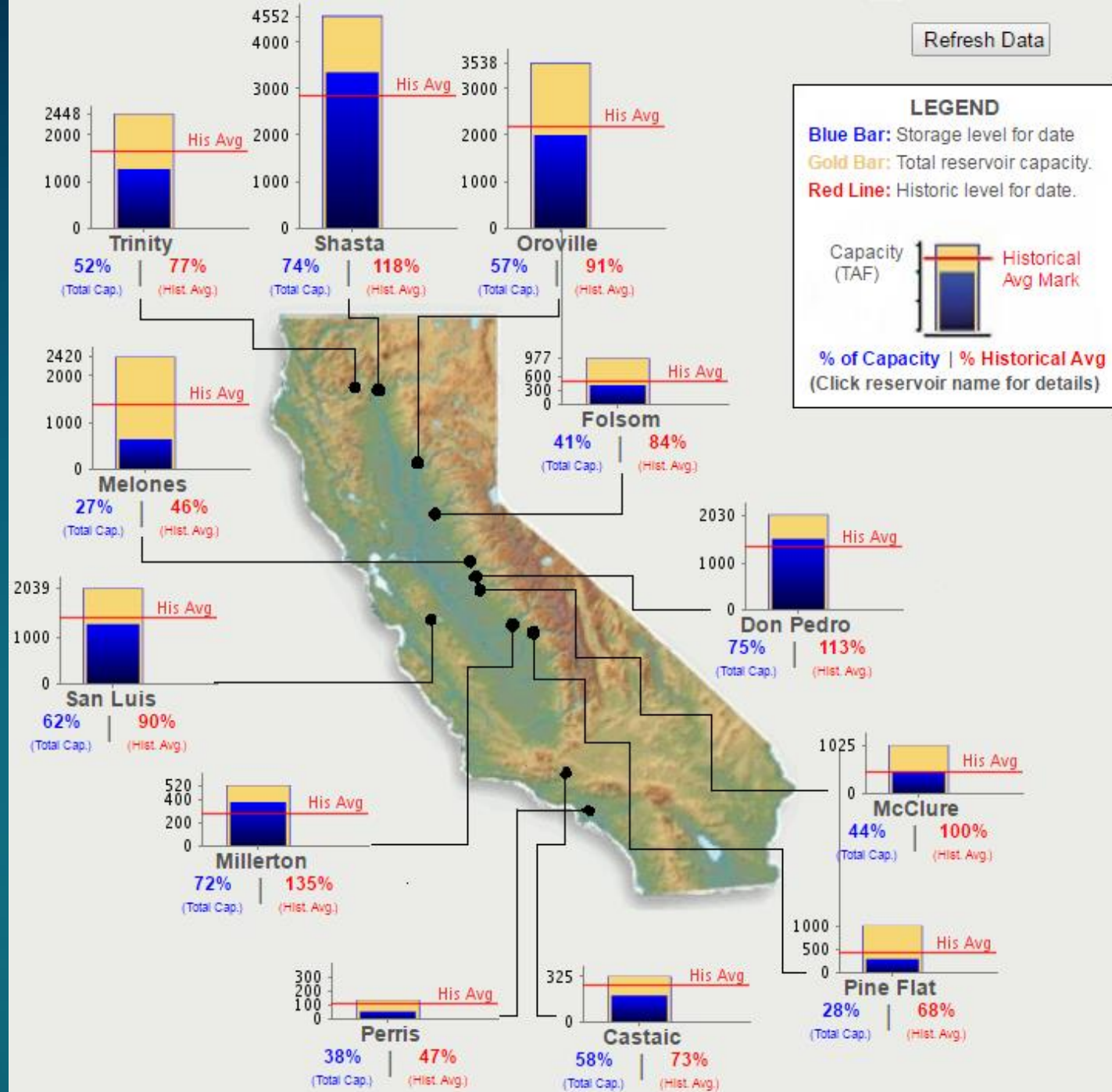
- Rain through Jan. 10:
 - North at 203 % of normal
 - Central at 190 % of normal
 - South at 198 % of normal

California Snow Water Content - Percent of April 1 Average For: 13-Jan-2017



DWR Reservoirs

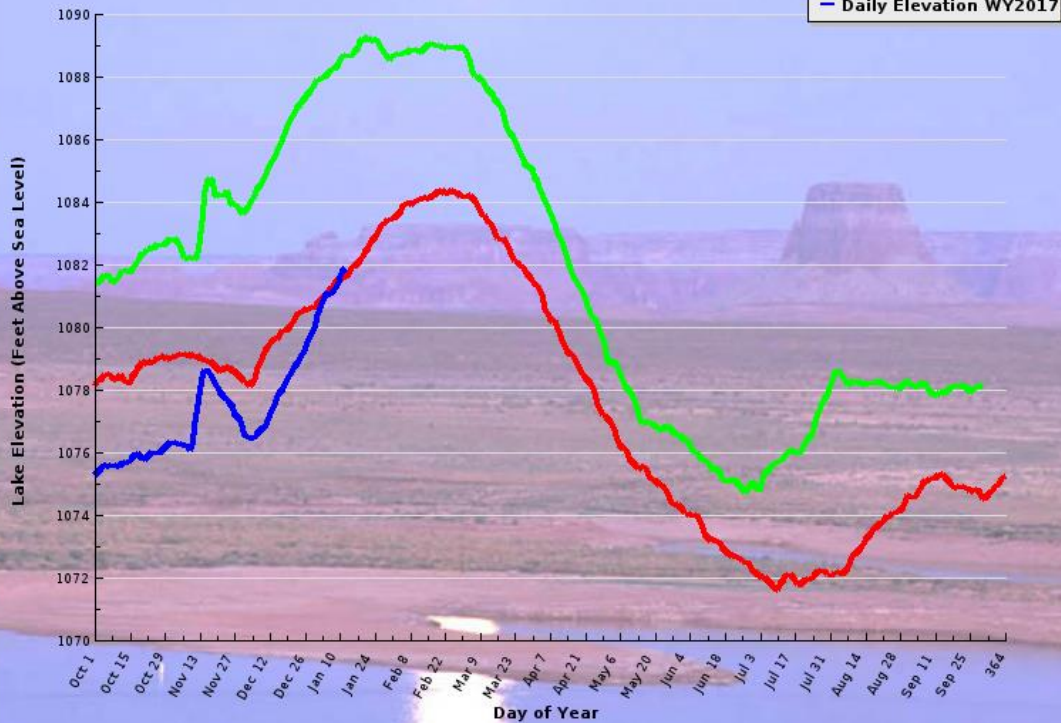
- Improvement to Storage
- SWP Table A at 45%



Colorado Outlook

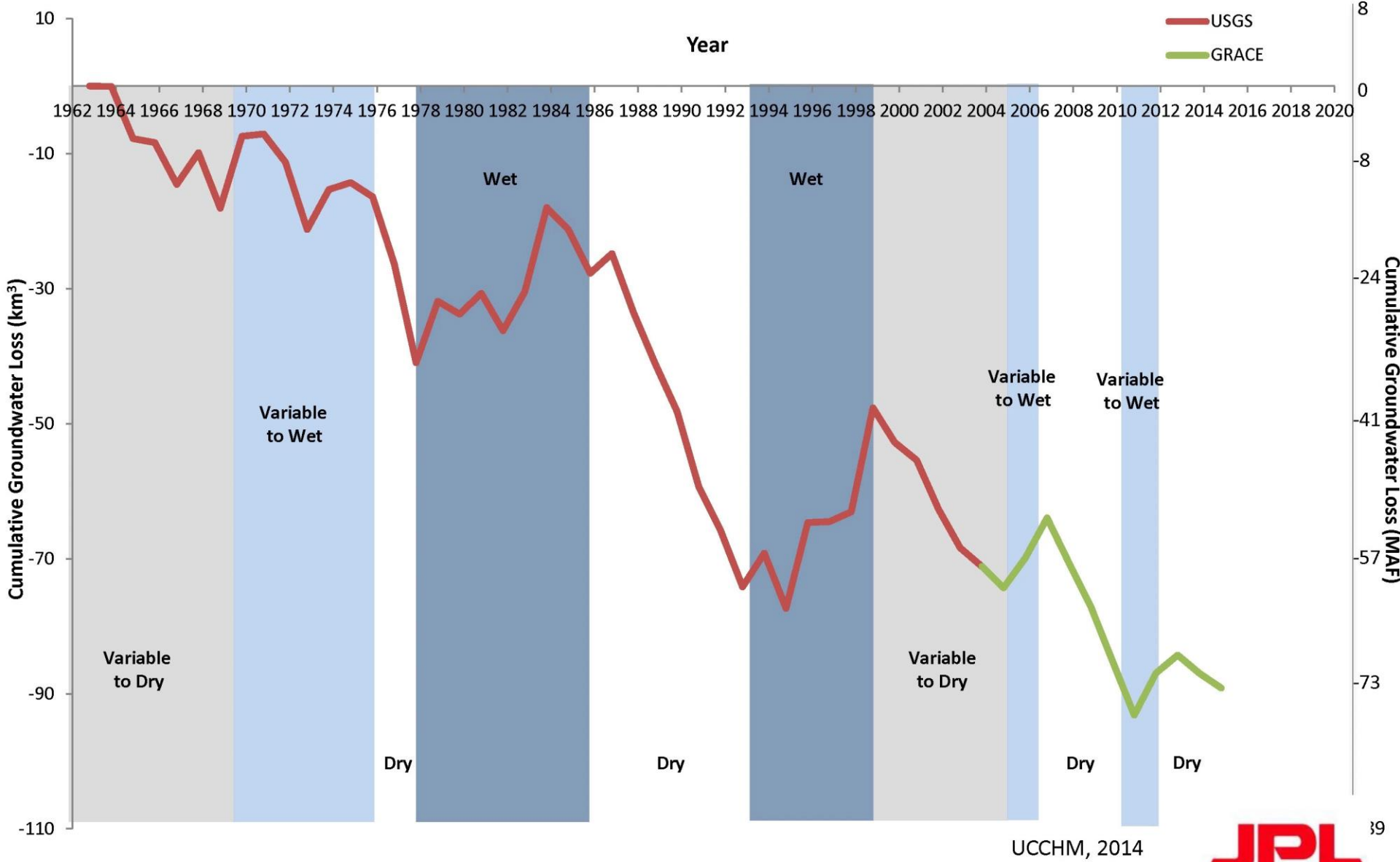
Lake Mead Daily Water Levels

Last 3 Water Years
Last Measurement: Jan 9th, 2017



- 48% Shortage Probability in 2018
- Good early snowpack (150%)
- However, vast majority is Feb-April
- Forecast 90% runoff into Lake Powell

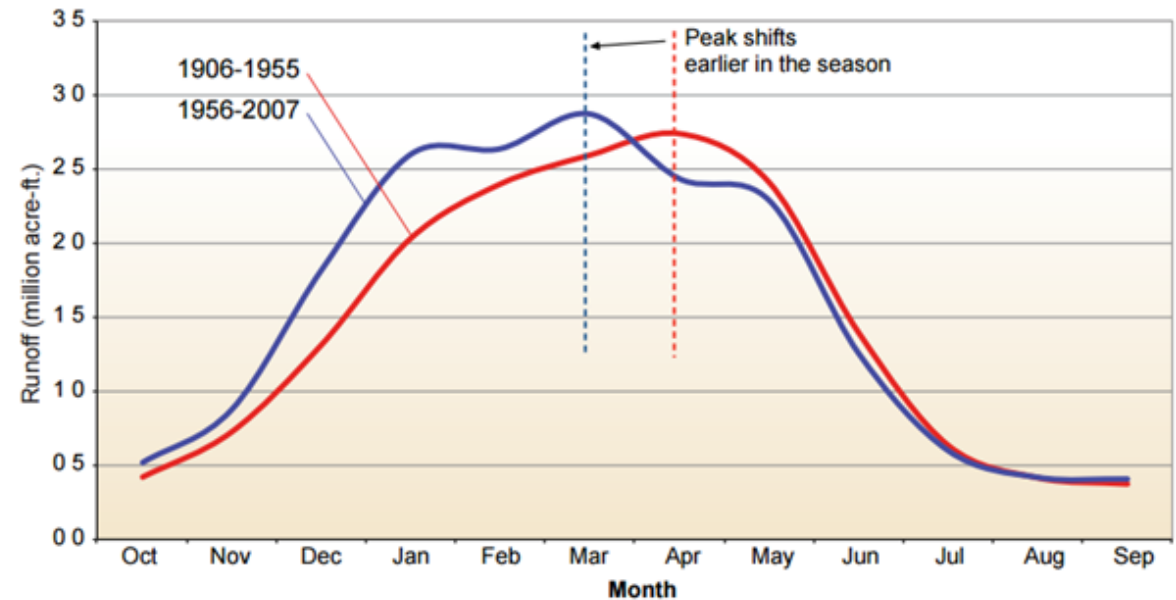
Cumulative Groundwater Depletion in California's Central Valley from USGS and GRACE



Summary

- Still early in the water year
 - Good early snow
- Massive GW deficit
- Structural Imbalance on the Colorado
- Staff to recommend Stage 1 at February Board meeting
- Evaluate WSCP Stage 1 April/May with final hydrology numbers

Monthly Average Runoff of Sacramento River System



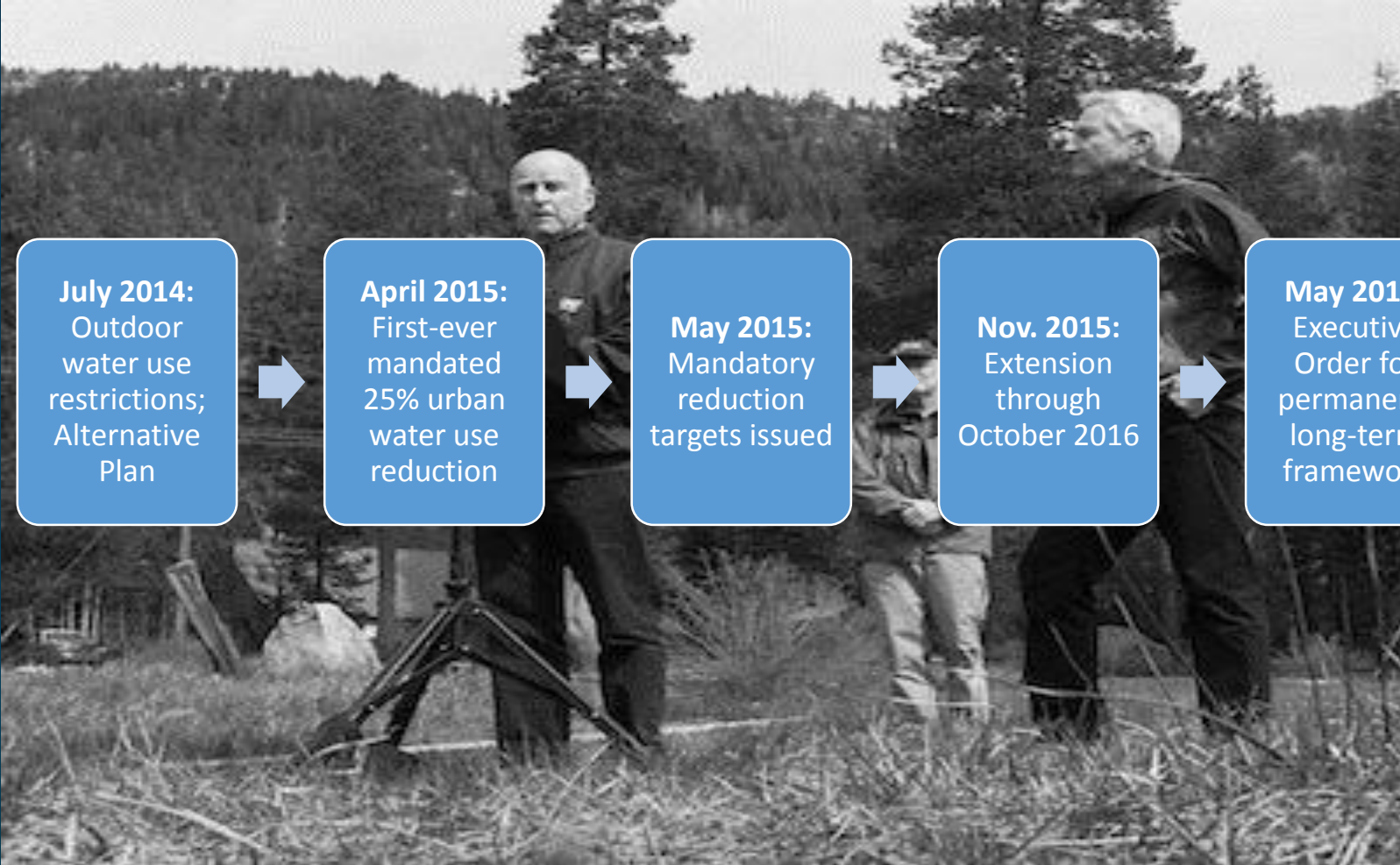
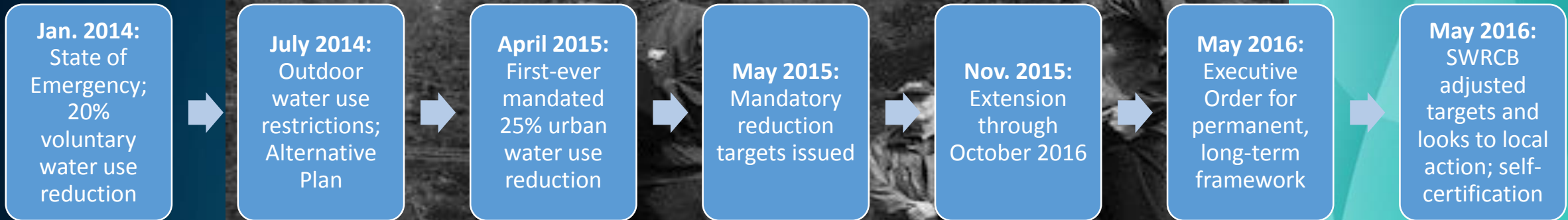


moulton niguel water district

Long Term Efficiency Framework Update

Board Meeting
January 19, 2017

Governor Brown Takes Action to Address California Drought



Key Components of Long Term Framework

- Use Water Wisely
- Eliminate Water Waste
- Strengthen Local Drought Planning

EO Overview: Use Water More Wisely

- EO Directives #1 through #3:
 - Adjust emergency conservation regulations, develop proposal to achieve a mandatory reduction that builds off 25% previous conservation targets
 - Set water use targets by establishing statewide standards for indoor water use, outdoor water use, water loss, and CII (commercial, industrial, and institutional)
 - Permanently require monthly reporting from suppliers on water use, conservation, and enforcement

EO Overview: Eliminate Water Waste

- EO Directives #4 through #7:
 - Permanently prohibit practices that waste water
 - Minimize system leaks
 - Accelerate data collection, improve management, and prioritize capital projects to reduce water waste
 - Certify innovative water conservation and water loss detection and control technologies that also increase energy efficiency

EO Overview: Strengthen Local Drought Resilience

- EO Directives #8 through #10:
 - DWR to strengthen requirements for urban water shortage contingency plans (WSCPs), creating common standards and planning for at least five years of drought.
 - For areas not covered by a WSCP, DWR shall work with counties to facilitate improved drought planning for small water suppliers and rural communities.

Use Water Wisely

- Agency-wide Water Budgets
 - Indoor
 - Outdoor
 - Commercial
 - Water Loss Standards set through SB 555

Terminology

- **Standard**
 - A metric used to indicate a level of water-use efficiency
 - Example: GPCD, evapotranspiration adjustment factor
- **Budget**
 - The volume (or GPCD) calculated by setting a standard
 - Example: the indoor residential budget = standard x pop. x days/year
- **Target**
 - The sum of each budget volume/GPCD
 - Unique to each supplier

Indoor Residential Budget

- **Indoor Standard:**
 - SB x7-7 standard is 55 GPCD and used as interim 2018 standard
 - EO agencies will set 2025 standard in 2018 based on additional studies
- Indoor residential standard
 - Expressed in gallon per capita per day (GPCD)

$$(\text{Pop.}) \times (\text{GPCD}) \times (365 \text{ days/year}) = \text{volume}$$

Outdoor Water Use Budget

$(ETAF) \times (\text{Landscape Area}) \times (ET_o) = \text{volume}$

ETAF is the Evapotranspiration Adjustment Factor

- Used to quantify the type of planting and the level of water use in a landscape

Model Water Efficient Landscape Ordinance(MWELO) uses ETAF to establish water budgets for new landscapes

Outdoor Water Use Budget

- **Outdoor Standard:**

- Provisional standards based on Model Water Efficient Landscape Ordinance:
 - 0.8 reference Evapotranspiration (Et) (pre-2010)
 - 0.7 reference ETo (2010-2015)
 - 0.55 (residential) or 0.45 (commercial) post 2015
 - 1.0 for special landscapes (including RW)
- Set 2025 Standard in 2018 after completing landscape area analysis

Landscape Area Measurement

- Pilot Program with accuracy assessment
 - 2 agency
 - 30-50 agency
 - Complete entire state
- Data Collaborative evaluating with free imagery
 - Grant from Water Foundation

Implementation: Efficiency Standards

- **Commercial, Industrial, & Institutional (CII)**
 - SBx7-7 required 10% reduction in per capita CII water use
 - Rather than a volumetric target EO Agencies are recommending the following CII performance measures:
 - Dedicated Irrigation Accounts
 - Measure the landscape area for all existing
 - Establish dedicated irrigation accounts for CII landscapes over a specified size threshold
 - Require classification (NAICS or other system adopted by the state) by (2021), develop benchmarks.
 - Audits and water management plans for reporting efficiency in CII water use. Audits and plans for subset of CII customers, based on volume, percentage, or number.

Water Loss Budget

- **Water Loss**
 - SB 555 Standards
 - State Water Board rulemaking to commence in 2019 with standards set in 2020
 - Will include real and apparent losses

Draft Framework:

Water Use Target Calculation

Targets calculated by adding the volume or GPCD from sector budgets, but not CII

Illustrative Target Calculation with Sample Numbers:

<u>Sector</u> <u>(GPCD)</u>	<u>Budget (vol.)</u>	<u>Budget</u>
Indoor Residential	744	55
Outdoor Landscape	166	44
Water Loss	560	7
TARGET	1,470 (AF)	128 (GPCD)

Eliminate Water Waste

- Make permanent practices that reduce waste & prohibit:
 - Hosing off sidewalks
 - Watering within 48 hours of rain
 - Irrigating turf on street medians
 - Using non-recirculated water in a fountain
 - Washing cars w/out a shutoff nozzle
- Minimize System Leaks

Implementation: Strengthen Drought Resilience

- **Plan:** Develop supplier-specific WSCP with defined elements
- **Assess:** Defined process to annually assess conditions and respond with supplier-appropriate actions
- **Respond:** Implement supplier appropriate actions already defined in WSCP (based upon assessment results)
- **Reporting:**
 - Submit annual assessment to State agencies
 - Submit WSCP every 5-years with UWMP
 - Submit monthly status when certain stages activated

Strengthen Local Drought Resilience

- Actions required- no impact to District
 - Annual Reporting on WSCP
 - Develop Communications Plan
 - Address Financial Elements
 - Compliance

Long Term Framework Timeline

**November
2016**

**Draft
report
released**

**February
2017**

**Final report
to
legislature**

**By end of
2017**

**Legislation
to amend
water code**

Late 2018

**Final
targets set**

2019

**Interim
Target
Reviewed**

2021

**Initial
reporting
from water
agencies**

2025

**Compliance
enforced**