

WASTEWATER SHEDS OF MNWD

Exhibit 1

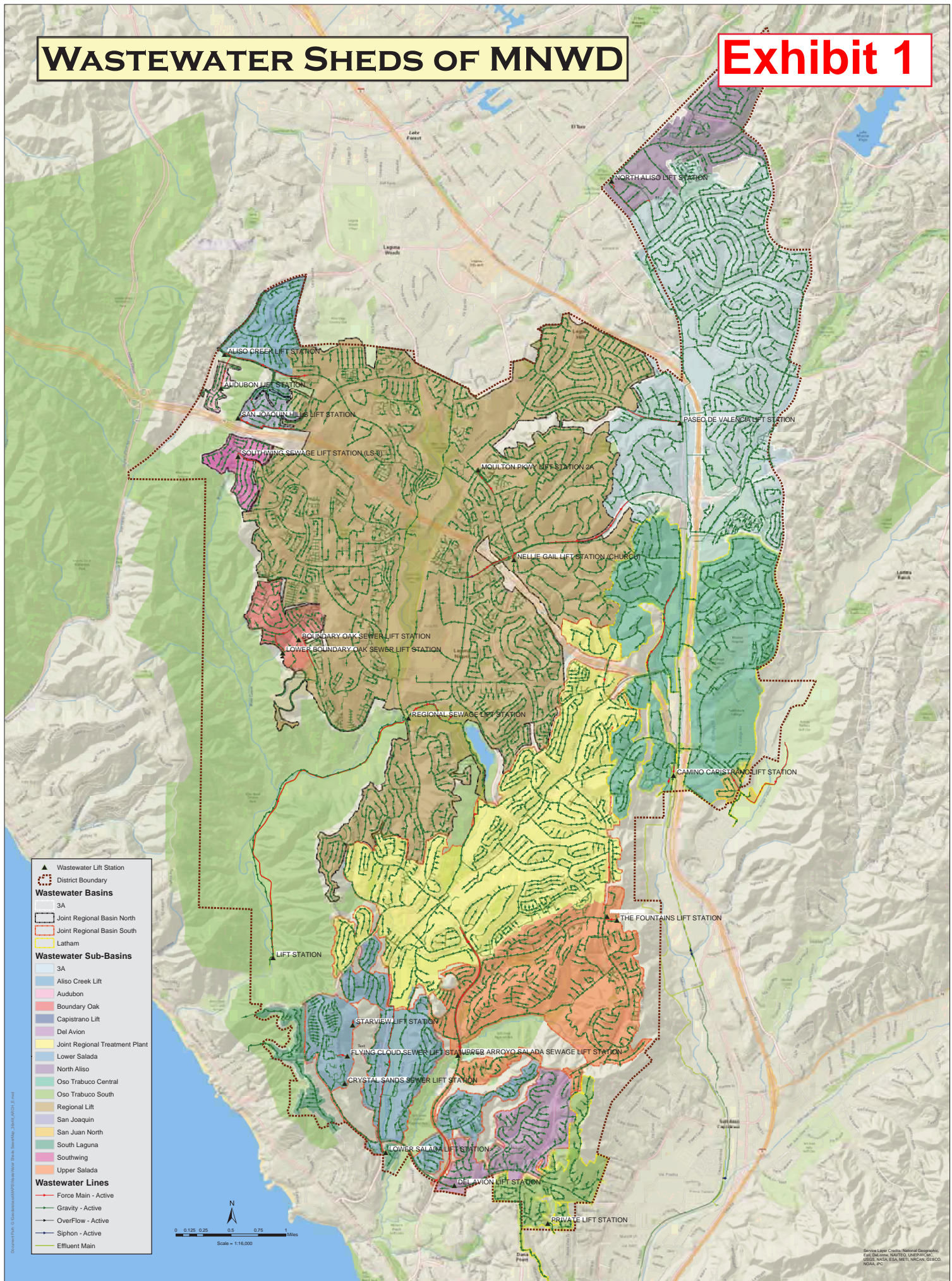
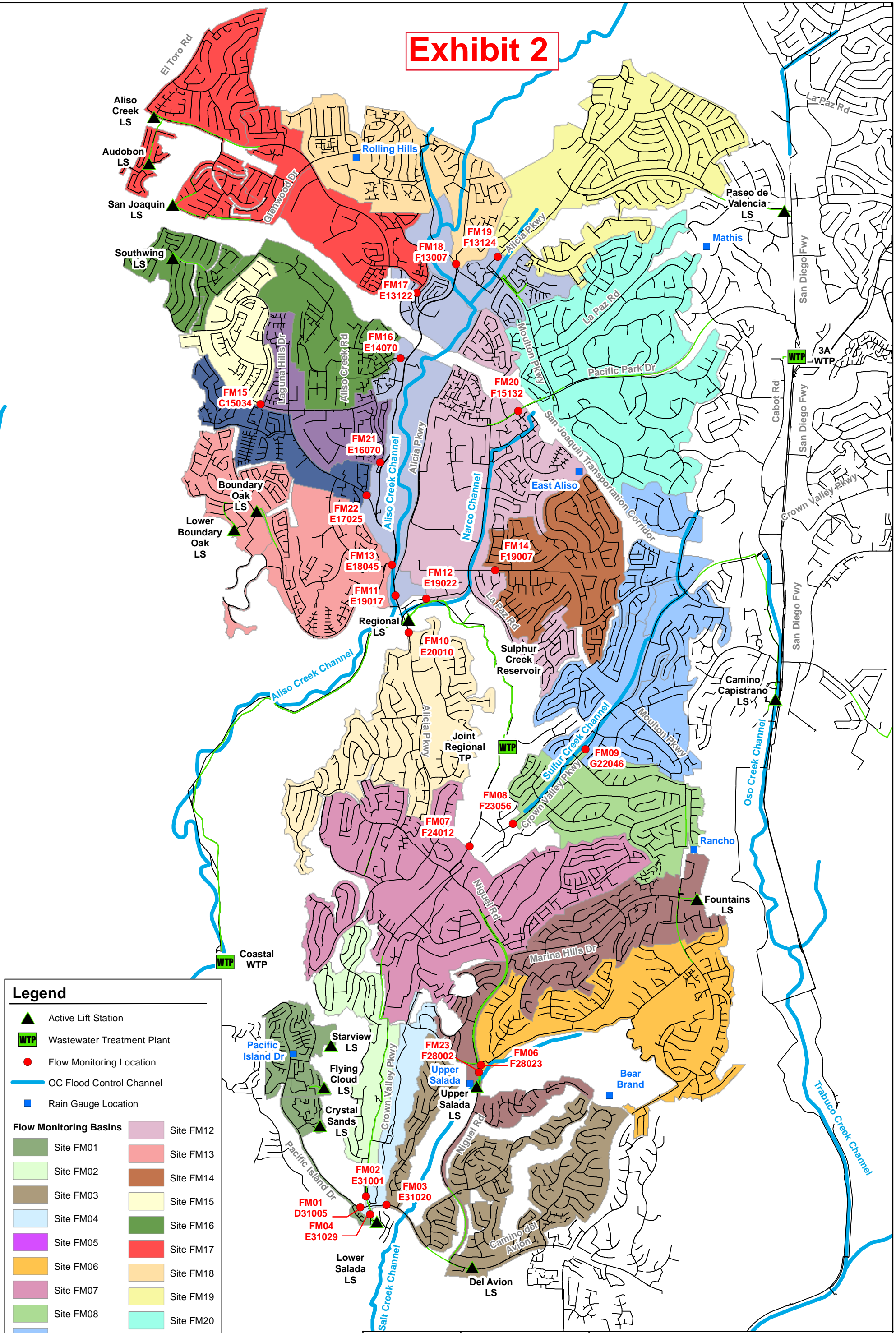


Exhibit 2



Legend	
	Active Lift Station
	Wastewater Treatment Plant
	Flow Monitoring Location
	OC Flood Control Channel
	Rain Gauge Location
Flow Monitoring Basins	
	Site FM01
	Site FM02
	Site FM03
	Site FM04
	Site FM05
	Site FM06
	Site FM07
	Site FM08
	Site FM09
	Site FM10
	Site FM11
	Site FM12
	Site FM13
	Site FM14
	Site FM15
	Site FM16
	Site FM17
	Site FM18
	Site FM19
	Site FM20
	Site FM21
	Site FM22
	Site FM23



AKM
PROJECT NO:
DATE: August 2020

Moulton Niguel Water District
2019-2020 RDII Study
**Flow Monitoring and
Ran Gauge Locations**
Figure 5

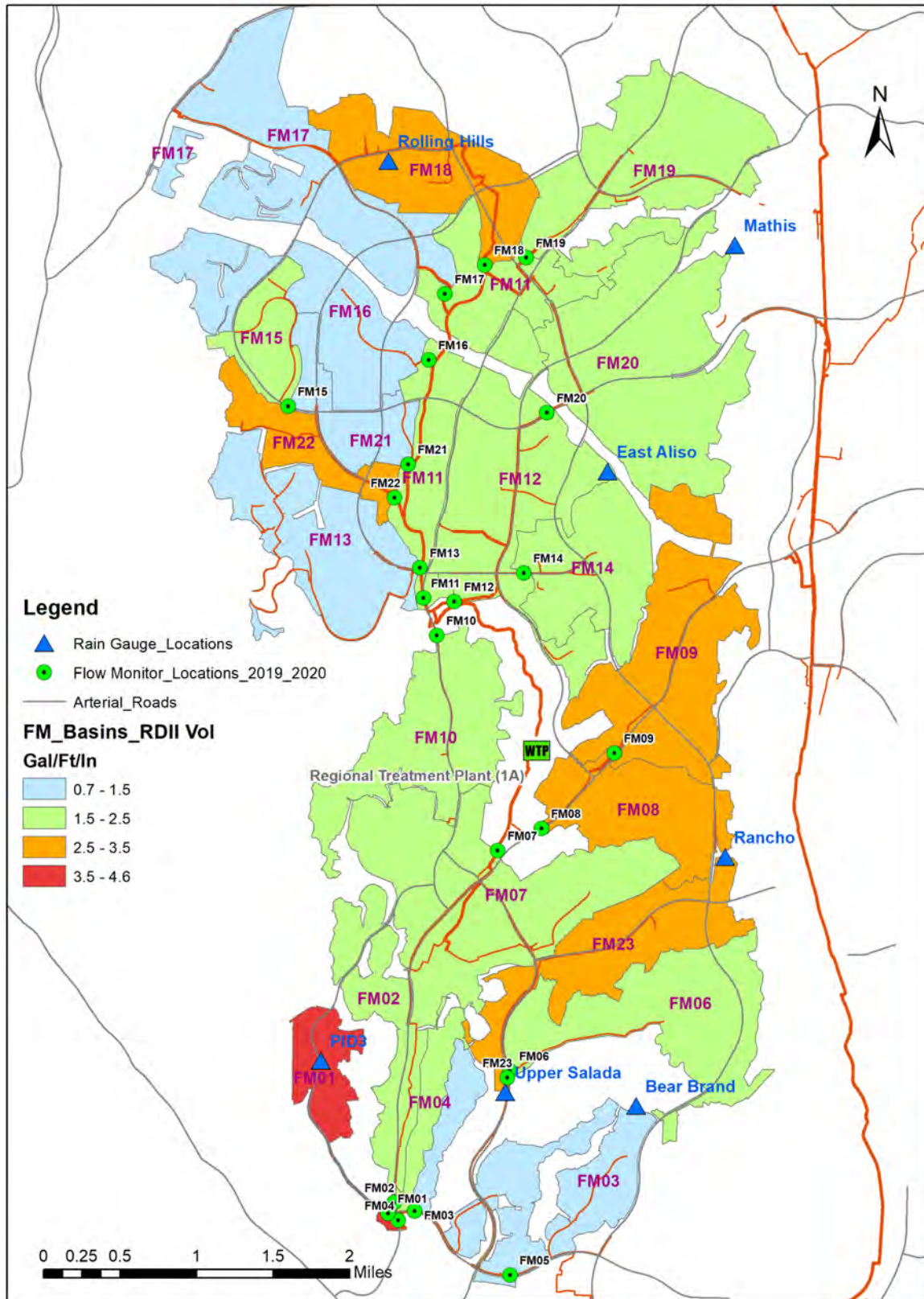


Figure 1.4 – Basin Normalized RDII (Gallons/ ft of pipe/ in rain)

Exhibit 4

2019-20 Wastewater Inflow and Infiltration Flow Monitoring Recommended Next Steps

- Continued flow monitoring of the identified basins.
- Further breakdown of some basins into smaller sub-basins to refine the areas of interest.
- To the extent feasible, inspect manholes and obtain CCTV footage within the areas of interest during or immediately after storm events.
- Seal manhole rims and install manhole vent plugs within one sub-basin to determine the associated effect on I&I