

H2O for HOAs Workshop



Storm Water Program BMPs

April 26, 2018

Presented at Laguna Niguel City Hall

List of Handouts

- Hard copy of this presentation
- Sample contract document language
- List of websites and contact information for where to find more information

Sewer vs. Storm Drain



SEWER VS. STORM DRAIN

DO YOU KNOW THE DIFFERENCE?

Not all water in Orange County is treated the same...in fact, some water isn't treated at all. Rain and water from sprinklers and hoses wash litter, pet waste, motor oil, pesticides and other pollutants into the storm drain where it flows untreated into our creeks, rivers, bays and ultimately, our ocean. Only water that enters the sewer (from sinks and toilets) is treated before entering our waterways. SO DON'T TREAT THEM THE SAME.

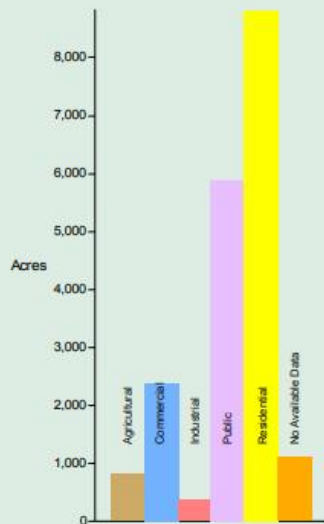
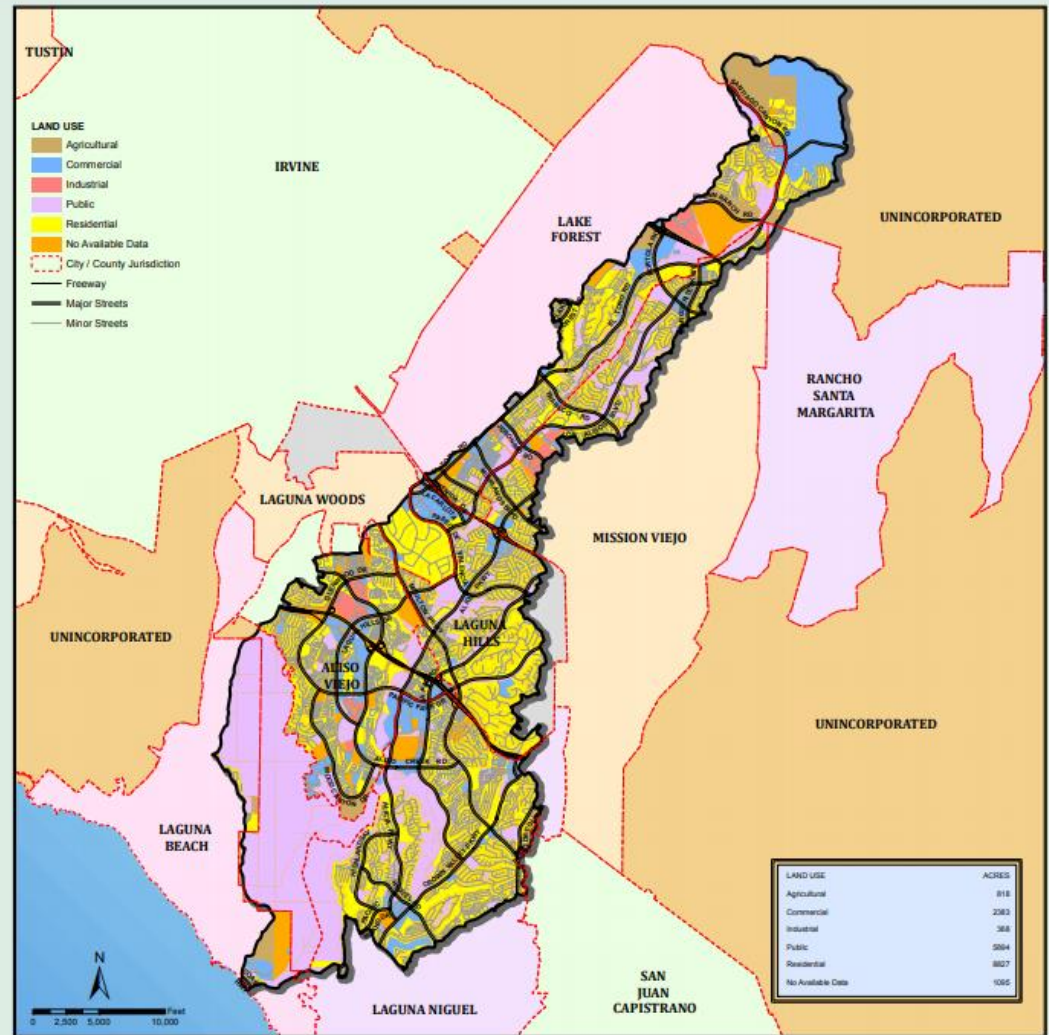
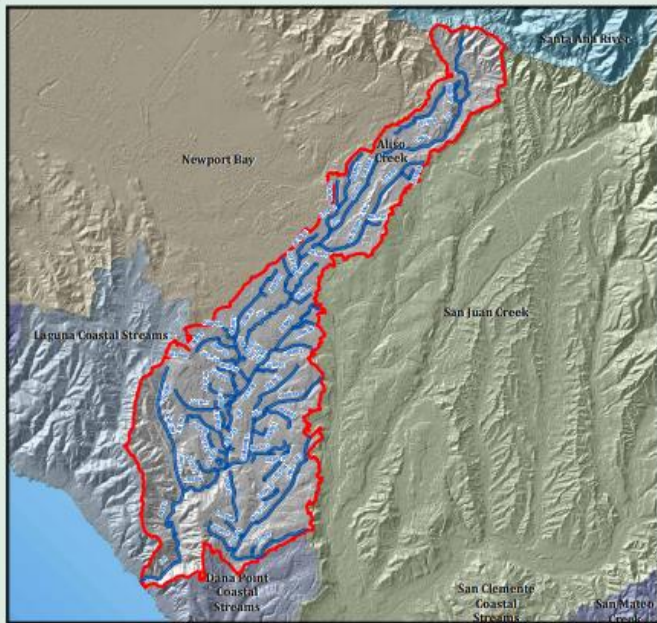


www.ocwatersheds.com

Remember The Ocean Begins at Your Front Door

What is a Watershed?

A watershed is the geographic area draining into the ocean or other body of water through a single outlet and includes the receiving waters.



22314 Acres

WATERSHED: ALISO CREEK

COUNTY OF ORANGE, CALIFORNIA

Prepared and Provided by:
 City of Orange
 Planning Department
 1000 N. Tustin Ave.
 Orange, CA 92667
 Date: 10/1/2011

For the purpose of this map, the City of Orange has adopted the following disclaimer:
 The City of Orange and its Planning Department do not warrant the accuracy of the information contained on this map. The City of Orange and its Planning Department are not responsible for any errors or omissions on this map. The City of Orange and its Planning Department are not responsible for any damages or losses resulting from the use of this map. The City of Orange and its Planning Department are not responsible for any damages or losses resulting from the use of this map.

10/1/2011 10/1/2011

What Can You Do To Help?

Implement Best Management Practices (BMPs):

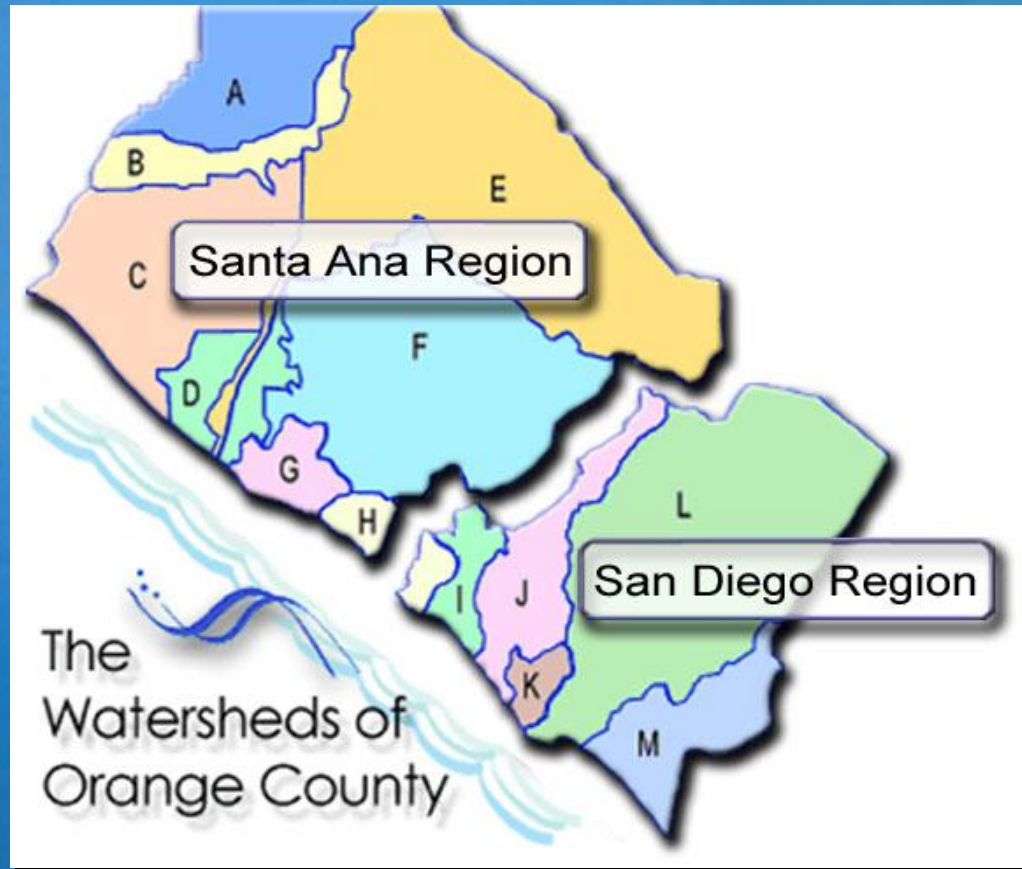
Practical and economically achievable measures such as good housekeeping, education and maintenance practices to reduce or eliminate discharges of pollutants.

CIA/HOA Program

Program Goal

Increase understanding and implementation of appropriate BMPs to prevent pollutants from reaching waterways and the Pacific Ocean

Regional Board Boundaries within Orange County



San Diego Regional Water Quality Control Board Permit

- Residential
- Commercial
- Industrial
- Municipal
- Construction

CALIFORNIA REGIONAL WATER QUALITY CONTROL BOARD SAN DIEGO REGION

ORDER NO. R9-2013-0001,
AS AMENDED BY ORDER NOS. R9-2015-0001 AND R9-2015-0100
NPDES NO. CAS0109266

NATIONAL POLLUTANT DISCHARGE ELIMINATION SYSTEM (NPDES) PERMIT AND WASTE DISCHARGE REQUIREMENTS FOR DISCHARGES FROM THE MUNICIPAL SEPARATE STORM SEWER SYSTEMS (MS4s) DRAINING THE WATERSHEDS WITHIN THE SAN DIEGO REGION

The San Diego County Copermittees in Table 1a are subject to waste discharge requirements set forth in this Order.

Table 1a. San Diego County Copermittees

City of Carlsbad	City of Oceanside
City of Chula Vista	City of Poway
City of Coronado	City of San Diego
City of Del Mar	City of San Marcos
City of El Cajon	City of Santee
City of Encinitas	City of Solana Beach
City of Escondido	City of Vista
City of Imperial Beach	County of San Diego
City of La Mesa	San Diego County Regional Airport Authority
City of Lemon Grove	San Diego Unified Port District
City of National City	

The Orange County Copermittees in Table 1b are subject to waste discharge requirements set forth in this Order.

Table 1b. Orange County Copermittees¹

City of Aliso Viejo	City of Rancho Santa Margarita
City of Dana Point	City of San Clemente
City of Laguna Beach	City of San Juan Capistrano
City of Laguna Hills	City of Laguna Woods
City of Laguna Niguel	County of Orange
City of Mission Viejo	Orange County Flood Control District

¹ While not listed in Table 1b., the City of Lake Forest remains a Copermittee under this Order until the later effective date of this Order or the effective date of Santa Ana Water Board Tentative Order No. R8-2015-0001. Thereafter, the City of Lake Forest will no longer be considered a Copermittee under this Order because its Phase I MS4 discharges will be regulated by the Santa Ana Water Board pursuant to Water Code section 13228 designation. The requirements of this Order that apply to the City of Lake Forest for the duration of this Order, however, are described in Finding 29 and Footnote 2 to Table B-1.

CIA/HOA Activities That Generate Pollutants

- Automobile Parking and Washing
- Landscaping and Irrigation
- Community Center O&M
- Recreation Area O&M
- Maintenance Yard Operations
- Hardscape, Fountain, and Pool Maintenance
- Street and Storm Drain Maintenance

Examples of Pollutants and Sources

Activity	Potential Pollutants								
	Sediments	Nutrients	Pathogens/ Coliform	Foaming Agents	Metals	Hydrocarbons	Hazardous Materials	Pesticides and herbicides	Other
Automobile parking	X				X	X	X		
Automobile washing	X	X		X	X	X	X		
Household Hazardous Waste (HHW) disposal				X	X	X	X	X	X
Sidewalk, plaza and fountain cleaning	X	X	X	X			X		
Landscape maintenance	X	X	X				X	X	
Community pool O&M	X	X	X						X

Examples of Pollutants and Sources

(continued)

Activity	Potential Pollutants								
	Sediments	Nutrients	Pathogens/ Coliform	Foaming Agents	Metals	Hydrocarbons	Hazardous Materials	Pesticides and herbicides	Other
Recreation/common area O&M	X	X	X					X	
Pet waste disposal	X	X	X						
Garden waste disposal	X	X	X				X	X	
Automobile repair and maintenance	X				X	X	X		
Maintenance yard operation	X	X	X	X	X	X	X	X	X

BMP Implementation

- CIA/HOAs with Publicly-Owned and Maintained Streets and Storm Drains
- CIA/HOAs with Privately-Owned and Maintained Streets and Storm Drains

BMP Fact Sheets

- Fact sheets have been developed to provide more detailed guidance
- Fact sheets include:
 - Pollution prevention
 - BMPs
 - Training
 - References

County Stormwater Program

“OC Watersheds”

The screenshot shows a web browser window with the address bar displaying www.ocwatersheds.com/programs/waterways/stormwater. The website header includes the OC Public Works logo, the OC.gov.com domain, and a search bar. The main navigation menu lists: OC PUBLIC WORKS, WATER POLLUTION HOTLINE, PUBLIC EDUCATION, WATERSHED PROGRAMS, RAIN / WATER QUALITY DATA, DOCUMENTS, and CONTACT US. The breadcrumb trail shows: Home > OC Watersheds > Our Waterways > OC Stormwater Program. The page content features a sidebar with links to the OC Stormwater Program Home, Do You Know Where Runoff Goes?, Reports and Documents, Stormwater Presentations, Participating Cities, Resource Links, Documents for Public Review, and the OC Environmental Resources Data Portal. The main content area is titled "OC Stormwater Program" and includes social media sharing buttons for Twitter, Google+, and Facebook. Below this is a "Regulations" section with text explaining that water pollution degrades surface waters and that the EPA enforces CWA requirements. It also mentions that since 1990, operators of municipal separate storm sewer systems (MS4s) are required to develop a stormwater management program.

Orange County, California - x

www.ocwatersheds.com/programs/waterways/stormwater

OC Public Works
OC Watersheds

OC.gov.com

quick access

Current Agency
Entire County

Search...

Low Graphics Version

OC PUBLIC WORKS WATER POLLUTION HOTLINE PUBLIC EDUCATION WATERSHED PROGRAMS RAIN / WATER QUALITY DATA DOCUMENTS CONTACT US

OC Watersheds > Our Waterways > OC Stormwater Program

Email Print

OC STORMWATER PROGRAM

- » OC Stormwater Program Home
- » Do You Know Where Runoff Goes?
- » Reports and Documents
- » Stormwater Presentations
- » Participating Cities
- » Resource Links
- » Documents for Public Review →
- » OC Environmental Resources Data Portal

POPULAR

- BMP Fact Sheets
- Documents for Public Review
- Drainage Area
- Educational

OC Stormwater Program

[Tweet](#) [G+](#) [Like 3](#)

[f](#) [t](#)

Regulations

Water pollution degrades surface waters, creating unsafe conditions for fishing, swimming, and other activities as well as impacting drinking water resources. Protection and preservation of water resources in the United States is governed by the federal Clean Water Act. Passage of the 1987 Water Quality Act established regulation of non-point source pollution to augment the regulation of point source pollution established by the 1972 Federal Water Pollution Control Act. Section 402(p)(2) of the 1987 regulation created the National Pollution Discharge Elimination System (NPDES) permit program to control non-point source pollution.

The Environmental Protection Agency (EPA) enforces the CWA requirements; however, in California, the State Water Resources Control Board and nine associated Regional Water Quality Control Boards ensure compliance with the CWA under the auspices of the EPA.

Since 1990, operators of municipal separate storm sewer systems (MS4s) are required to develop a stormwater management program designed to prevent harmful pollutants from impacting water resources via stormwater runoff. In



City of Aliso Viejo

Environmental Services - x

www.cityofaliso Viejo.com/city-hall/departments/public-works/environmental-services/

f t i You Tube Sign up for our e-Newsletter Search

Home City Hall v About Aliso Viejo v Parks & Recreation v Services v How do I... v Emergency Services v



Home

Public Works

Engineering

Street Sweeping Map

Streets and Trails Masterplan

CommunityView GIS

Forms and Permits

Slurry Seal

Environmental Services

Recycling and Waste Program

City Hall » Departments » Public Works » Environmental Services

Environmental Services

Posted on January 13, 2015

The City of Aliso Viejo is committed to protecting the environment and is proactive in the implementation of pollution control and recycling measures.

The Environmental Services Section has developed comprehensive Stormwater and Solid Waste and Recycling Programs. Under these programs, the City provides assistance to residents and business owners, Homeowner Associations and Service Companies in compliance with the State and Federal regulations for water quality and solid waste recycling and diversion from landfills.

For more information, please contact the Department of Public Works.
Phone: (949) 425-2530
Email: public-works@cityofaliso Viejo.com
[Stormwater Program](#)
[Pollution Prevention](#)
[Water Efficient Landscape](#)
[Recycling and Solid Waste Program](#)

Posted in [Public Works](#).

City of Laguna Niguel

the City of Laguna Niguel


www.cityoflagunaniguel.org/index.aspx?nid=27

CALIFORNIA LAGUNA NIGUEL

GOVERNMENT DEPARTMENTS COMMUNITY BUSINESS ONLINE SERVICES HOW DO I...?

Search

AGENDAS & MINUTES
PUBLIC HEARING NOTICES
BIDS
EMPLOYMENT / COMPENSATION
ONLINE REGISTRATION



PUBLIC WORKS

[Home](#) > [Departments](#) > [Public Works](#) > [Urban Runoff Management](#)

Urban Runoff Management

The goal of the City's Urban Runoff Management Program is to protect the quality of water in our creeks and ocean by prohibiting pollutant-laden discharges into the storm drain system when it is not raining; and by reducing the amount of pollutants carried into the storm drains during rainstorms to the maximum extent practicable.

Responsibilities

The City's Public Works and Community Development Departments are responsible for coordinating the program, which is a requirement of the South Orange County National Pollutant Discharge Elimination System Permit issued by the San Diego Regional Water Quality Control Board. The City's Local Implementation Plan For Jurisdictional Runoff Management Program documentation is periodically updated as the requirements of the Permit evolve.



[Water Quality Laws](#)
[Construction](#)

Report


City of Laguna Hills

Water Quality | Laguna Hills

Secure | https://www.ci.laguna-hills.ca.us/229/Water-Quality

Create an Account - Increase your productivity, customize your experience, and engage in information you care about.

Sign In



LAGUNA HILLS
California


Government

Services

Explore Laguna Hills


Doing Business


How Do I...





Water Quality


Overwatering is Out

 Register for Classes

 Report an Issue

 Current Planning Projects

 Community Voice

 Agendas & Minutes

Home > Government > Departments > Public Services > Public Works > Water Quality

Water Quality

Did you know the largest source of water pollution comes from City streets, neighborhoods, construction sites, and parking lots?

Storm Drains

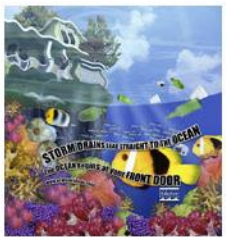
Anything we use outside of our homes, vehicles and businesses-such as motor oil, paint, pesticides, fertilizers, and cleaners, can be blown or washed into the storm drains.

The City's storm drain system is separate from the sewer system. In the sewer system, wastewater (sewage) is transported to wastewater treatment plants through underground sewer pipes. Whereas, in the storm drain system, water collected from the streets goes untreated into creeks and eventually the ocean.


Clean Waterways

Everyone's help is needed to keep the waterways clean. Together we can prevent pollutants from entering the storm drains by keeping our streets and gutter clean and following Best Management Practices. Below are some helpful resources and numbers

- [Orange County Watershed website](#)
- [Stormwater Pollution Clip](#)
- Hazardous Waste Collection Information: 714-834-6752



"COME TO THE CITY HALL AND ASK FOR THIS FREE POSTER"

 Enable Google Translate

City of Mission Viejo

Environmental Programs | x

cityofmissionviejo.org/green

Print


Volunteer

Donation & Sponsorship

Job Opportunities

Subscribe

SEARCH

MISSION VIEJO
Make Living Your Mission

Home

News

Events

Services & Guides

Document Center

Departments

Government

HOME > DEPARTMENTS > PUBLIC WORKS > ENVIRONMENTAL PROGRAMS

Text

Public Works Information

Capital Improvement Projects

Community GIS

Engineering Standard Plans

Environmental Programs

> Conservation

> Pollution Prevention

> Reduce, Reuse, Recycle

> Trash and Recycling Services

FEMA Flood Zone

Parking Permit

Environmental Programs

Earth Day/Arbor Day Celebration

Saturday, April 21, 2018
8:00 am to 12:00 pm

Come join us at Cordova Park as we celebrate Earth Day and Arbor Day on Saturday, April 21, 2018. The City is offering volunteer opportunities to beautify the park with new landscaping, and there will be free hotdogs and ice cream while supplies last. Volunteers should wear hats, gloves, boots, and sunscreen and bring a shovel for planting. Volunteers will need to submit a [registration form](#). For information on planting, contact Jerry Hill at 949-470-3095 or publicservices@cityofmissionviejo.org.

There will also be a Green Expo at the park featuring environmental programs and products. Vendors interested in participating as an exhibitor in the Green Expo must submit an [exhibitor application](#). For information about the Green Expo, contact Denise Matson at 949-470-3010 or greenmv@cityofmissionviejo.org.

Registration will begin at 7:30 am with planting and the Green Expo beginning at 8:00 am.

Compost Workshop

Saturday, April 28, 2018
9:00 am
Kershaw Garden, 200 Civic Center

The City of Mission Viejo and Waste Management are offering a [free compost workshop](#) to Mission Viejo

Pollution Prevention

- Use Safer Products
- Recycle and Reuse
- Reduce Exposure
- Use Dry Cleanup Methods (e.g., Sweeping)
- Properly Store and Label Materials



BMPs for HOAs with Publicly-Owned and Maintained Streets and Stormdrains

Activity	BMP	Fact Sheet
Parking vehicles on residential streets, driveways, or in common area parking lots	Automobile parking BMPs	R-3
Washing Vehicles in residential driveways or street	Automobile washing BMPs	R-2
Disposal of household hazardous wastes such as paint, bleach, etc.	Household Hazardous Waste BMPs	R-7
Cleaning of CIA/HOA sidewalks. Plaza, and entry monuments and fountains	Sidewalk, plaza, and entry monument and fountain maintenance BMPs	FP-4

BMPs for HOAs with Publicly-Owned and Maintained Streets and Storm Drains

(Continued)

Activity	BMP	Fact Sheet
Landscape maintenance including irrigation and fertilization	Landscape maintenance BMPs	FP-2 IC-7
Operation and maintenance of community pools	Pool cleaning BMPs	IC-16
Operations and maintenance of recreation/common areas such as greenbelts, parks, golf courses, and stables	Disposal of Pet Waste BMPs Landscape Maintenance BMPs Disposal of Green Waste BMPs	R-5 FP-2 R-6

Vehicle Parking

Problem: Vehicles leak motor oil, and block street sweepers from picking up trash and leaf debris.

Solutions:

- Remove vehicles from street during street sweeping/cleaning times
- Perform routine maintenance on vehicles to minimize leaks
- Place drip pans underneath leaking vehicles
- Use dry cleaning methods to remove material deposited by vehicles

Vehicle Washing

Problem: Chemicals and concentrated metals get washed into storm drain system

Solution: Prohibit car washing (and take car to a car wash)



Did you know that every time you wash your car in the driveway, all those **toxic chemicals** end up in our rivers, lakes and oceans?

Hardscape Maintenance

Problem: Pressure washing washes concentrated pollutants into storm drain system

Solution(s): Sweep, or block storm drain inlets and recover wash water

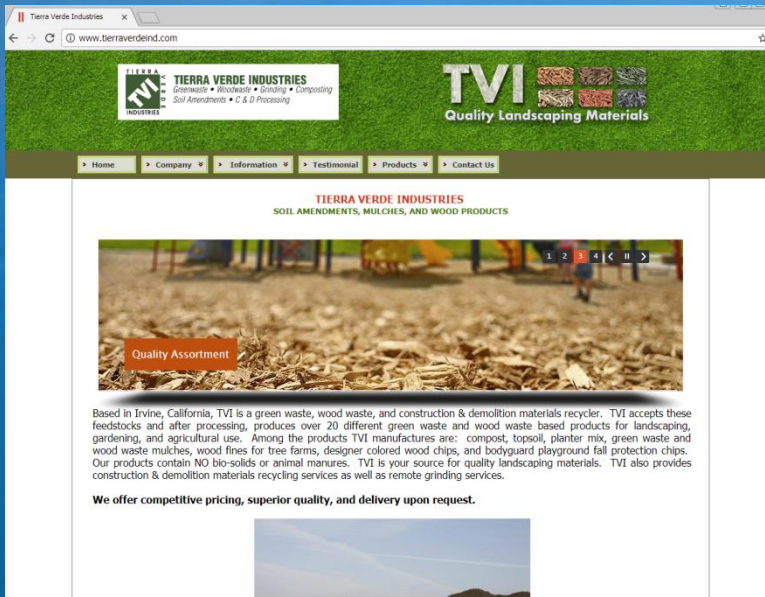


Landscape Maintenance

Problem: Organic waste, fertilizer, and pesticides can migrate into storm drain system.

Solutions for organic waste:

- All green waste must be collected and disposed of properly. The catch basin is not where green waste should be blown in.
- Recycle green waste! Assembly Bill 1826 requires it.



TIERRA VERDE INDUSTRIES
Quality Landscaping Materials

Home Company Information Testimonial Products Contact Us

TIERRA VERDE INDUSTRIES
SOIL AMENDMENTS, MULCHES, AND WOOD PRODUCTS

Quality Assortment

Based in Irvine, California, TVI is a green waste, wood waste, and construction & demolition materials recycler. TVI accepts these feedstocks and after processing, produces over 20 different green waste and wood waste based products for landscaping, gardening, and agricultural use. Among the products TVI manufactures are: compost, topsoil, planter mix, green waste and wood waste mulches, wood fines for tree farms, designer colored wood chips, and bodyguard playground fall protection chips. Our products contain NO bio-solids or animal manures. TVI is your source for quality landscaping materials. TVI also provides construction & demolition materials recycling services as well as remote grinding services.

We offer competitive pricing, superior quality, and delivery upon request.



CalRecycle
Mandatory Commercial Organics Recycling (MORE)

Home Consumers State & Local Government Business & Industry About Us

Organics

- MORE Home
- Food Scraps Management
- Food Banks & Food Recovery
- Case Studies & Model Programs
- Compost & Mulch
- Conversion Technologies
- FAQ
- Organics Home

Related Topics

- California Green Business Network
- CoolCalifornia.org Small Business Tool Kit
- Food Recovery Challenge (US EPA)
- Vermicomposting
- Mandatory Commercial Recycling

Contacts

- CalRecycle Programs
- CalRecycle Ombudsman
- Local Government Contacts

Mandatory Commercial Organics Recycling (MORE)

→ General Information

→ Business Requirements and Resources

→ Local Government Requirements and Resources

→ CalRecycle Requirements

→ Frequently Asked Questions

→ Listserv

→ Related Resources

General Information

Background and Overview

In October 2014 Governor Brown signed **AB 1826** (*Chapter 727, Statutes of 2014*), requiring businesses to recycle their organic waste on and after January 1, 2016, depending on the amount of waste they generate per week. This law also requires that on and after January 1, 2016, local jurisdictions across the state implement an organic waste recycling program to divert organic waste generated by businesses, including multifamily residential dwellings that consist of five or more units (please note, however, that multifamily dwellings are not required to have a food waste diversion program). Organic waste (also referred to as organics throughout this resource) means food waste, green waste, landscape and pruning waste, nonhazardous wood waste, and food-soiled paper waste that is mixed in with food waste. This law phases in the mandatory recycling of commercial organics over time, while also offering an exemption process for rural counties. In particular, the minimum threshold of organic waste generation by businesses decreases over time, which means an increasingly greater proportion of the commercial sector will be required to comply.

Why Organics? Mandatory recycling of organic waste is the next step toward achieving California's aggressive recycling and greenhouse gas (GHG) emission goals. California disposes approximately 30 million tons of waste in landfills each year, of which more than 30 percent could be used for compost or mulch (see the *2014 Waste Characterization Study*). Organic waste such as green materials and food materials are recyclable through composting and mulching, and through anaerobic digestion, which can produce renewable energy and fuel. Greenhouse gas (GHG) emissions resulting from the decomposition of organic wastes in landfills have been identified as a significant source of emissions contributing to global climate change. Reducing the amount of organic materials sent to landfills and increasing the production of compost and mulch are part of the **AB 32 (California Global Warming Solutions Act of 2006) Scoping Plan**. For more information on the connection between the waste sector and California's GHG emission reduction goals, please see [CalRecycle's Climate Change page](#).

Implementation Dates and Thresholds

The law phases in the requirements for businesses, including multifamily residential dwellings

Program News...

- In January 2017, a memo from CalRecycle Director Scott Smiline was sent to all jurisdictions outlining any time jurisdiction Reviews of Mandatory Commercial Recycling and Commercial Organics Recycling Programs.
- New Flyer and Brochure for schools regarding AB 1826 and small scale composting.
- Mandatory Businesses and Multifamily Organic Waste Recycling Brochure and now in Spanish.
- Education/Outreach Tools
- AB 876 Guidance and Calculator - CalRecycle created guidance and a calculator to assist jurisdictions with longer term planning for organics infrastructure. The related calculator is now available for use.

Organics in California's Overall Disposed Waste Stream, 2014

Organics are:

- Food
- Green - leaves, grass
- Landscaping - prunings, trimmings, branches, stumps
- Non-hazardous Wood Waste

* Compostable Paper includes food-soiled paper and other compostable paper

Data from CalRecycle's 2014 Disposal Facility-Based Characterization of Solid Waste in California

Landscape Maintenance

Solutions for fertilizer use:

- Follow the manufacturer's directions.
- Don't over fertilize.
- Fertilize only when plants are actively growing.
- Keep fertilizer off of impervious surfaces and sweep it back onto the lawn.
- Maintain a buffer zone around surface water bodies.



Landscape Maintenance

Solutions for pesticide use:

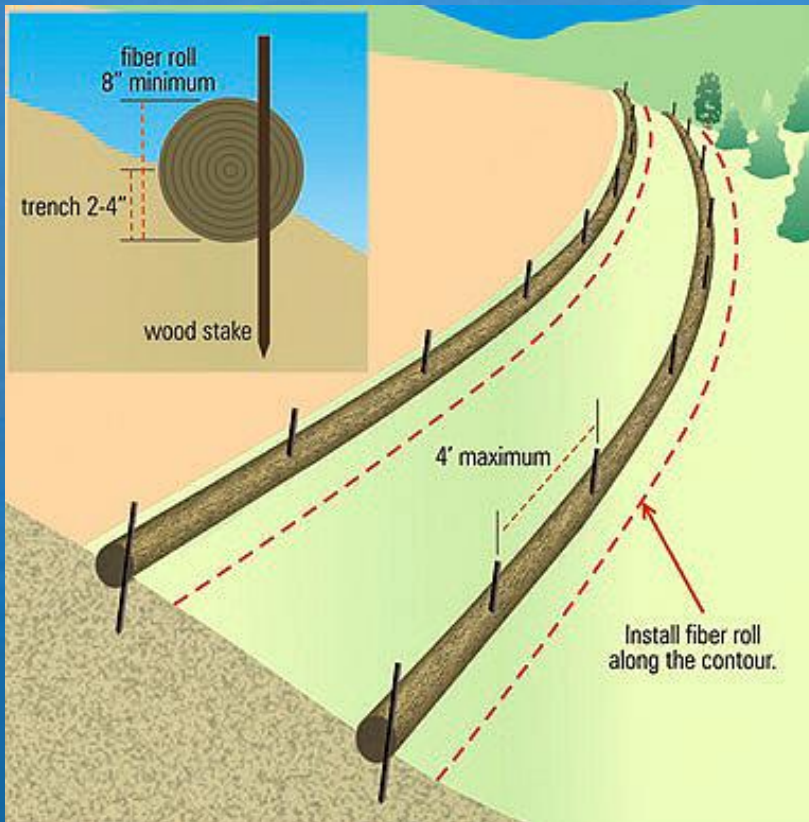
- Follow the directions on the label, the “label is the law” for pesticides.
- Don't overuse.
- Keep off impervious surfaces.
- Maintain a buffer zone around wells and surface waterbodies.
- Utilize Integrated Pest Management (IPM) practices.
- Properly store, dispose of and clean up spills.

Slope Maintenance



What's wrong with this picture?

Slope Maintenance



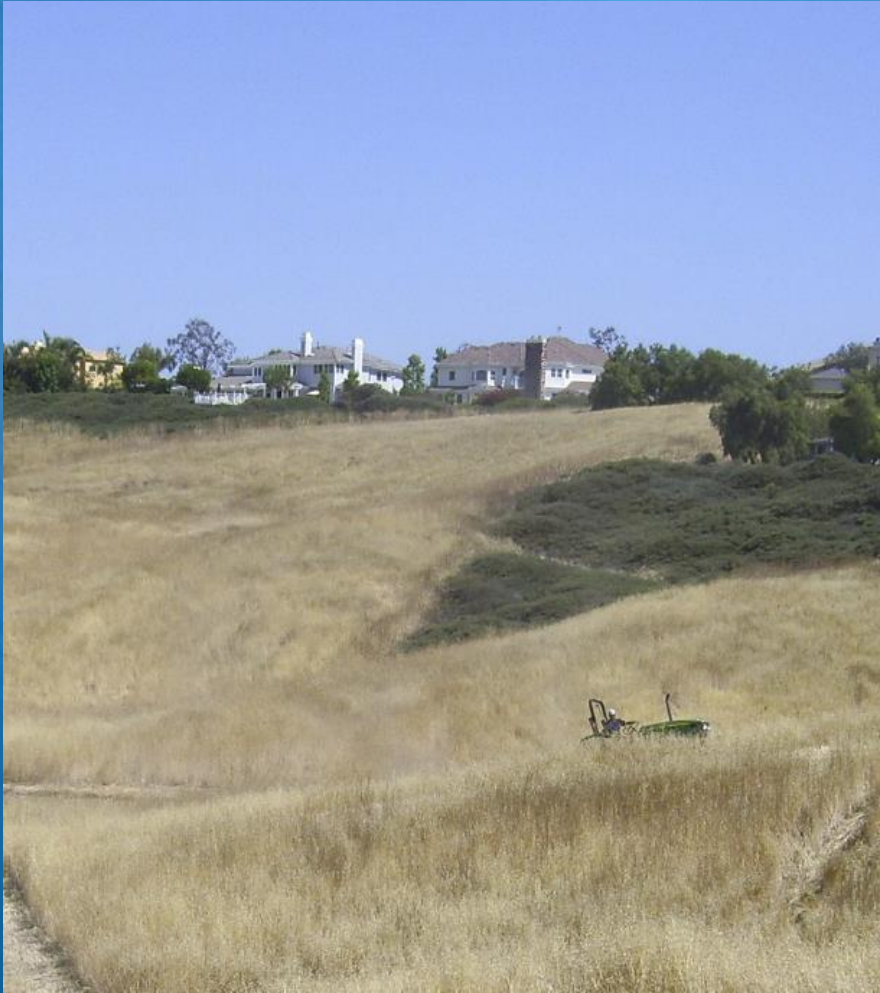
Temporary fiber rolls used on a slope

Slope Maintenance



Temporary fiber rolls used on a slope in combination with hydro-seeding, but permanent vegetation is best!

Slope Maintenance



Weeds? Mowing (NOT discing) is the correct abatement method!

Irrigation System Maintenance

Problem: Irrigation runoff carries pollutants to the storm drain system (and indicates water waste).

Solution: Adjust irrigation systems to not “water the sidewalk” and cause runoff into the storm drain system.



San Diego Regional Water Quality Control Board

SAN DIEGO WATER BOARD CRACKS DOWN ON OVER WATERING THAT LEADS TO POLLUTION

FOR IMMEDIATE RELEASE
August 18, 2015

Contact: Chiara Clemente
Phone: (619) 521-3371

SAN DIEGO -- The San Diego Regional Water Quality Control Board (San Diego Water Board) is cracking down on water wasters throughout its region to stem pollution that is generated by overwatering.

With the state in a fourth year of extreme drought conditions, the San Diego Water Board recently initiated compliance audits to determine which cities are taking effective measures to eliminate over-irrigation – a requirement of storm water regulations adopted more than five years ago. The statewide emergency water conservation regulation adopted in [July 2014](#) also prohibits runoff, which is generally the result of over-watering. The regional effort enhances compliance with both prohibitions.



Community Pool Operation & Maintenance

- Discharge pool water properly:
 - To sanitary sewer preferred
 - Last resort to storm drain (must dechlorinate and remove other pollutants)
 - Do not discharge diatomaceous earth



Common Area Maintenance

Disposal of Pet Waste

- Properly dispose of pet waste (includes stabled animals)
- Implement pet stations
- Restrict animal access to creeks and streams



Common Area Maintenance

Disposal of Green Waste

- Do not dispose of green waste in streets and in catch basins.
- Use a green waste collection service.
- Place temporary stockpiles away from storm drain inlets and watercourses.



Material Storage, Handling and Disposal

- Store materials indoors or under cover if possible
- Keep storage areas clean and dry
- Provide secondary containment for stored liquids
- Regularly inspect storage areas for spills or leaks



Trash Collection, Recycling and Disposal

- Regularly inspect trash containers for damage and repair or replace as needed.
- Contact waste hauler for replacement cans and bins:
CR&R: (877) 728-0446 or WM: 949-642-1191
- Secure trash containers and provide secured covers

**BMPs for HOAs with Privately-Owned and
Maintained Streets and Storm Drains
(In addition to those already detailed)**

Street Sweeping

- Maintain a consistent sweeping schedule
- Sweep streets at least once per month (recommended minimum)
- Avoid street cleaning during wet weather
- Don't flush down streets



Storm Drain Maintenance

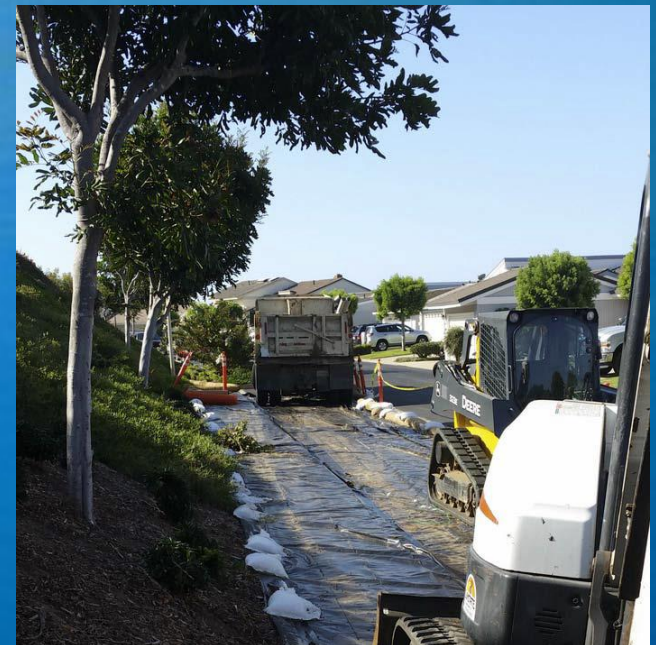
Problem: Storm drain catch basins collect trash and organics

Solutions:

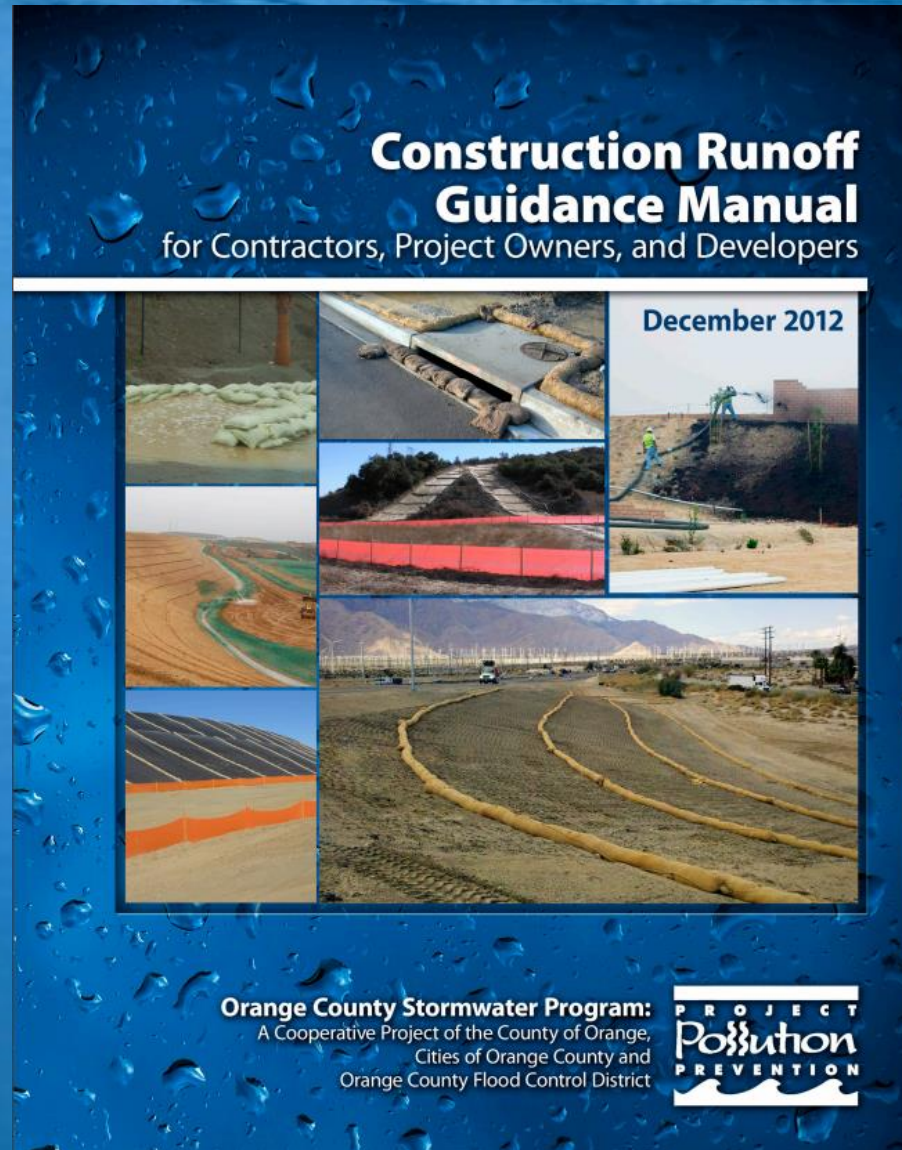
- Annually inspect and clean drainage facilities
- Eliminate any discharges that may occur while maintaining and cleaning drainage facilities
- Implement a storm drain stenciling program
- Report all observed illicit connections and discharges to the 24-hour water pollution problem reporting hotline (877) 89-SPILL or to the City.



Construction & Maintenance Projects



Construction & Maintenance Projects



Construction & Maintenance Projects

Orange County Stormwater Program

Best Management Practices for Construction Sites

Earthmoving Equipment

All earthmoving equipment must be stored onsite. Drip pans must be placed under equipment not in use, and maintenance must be conducted onsite instead of in the street. Any leaks should be cleaned up and repaired immediately.



Washout Areas

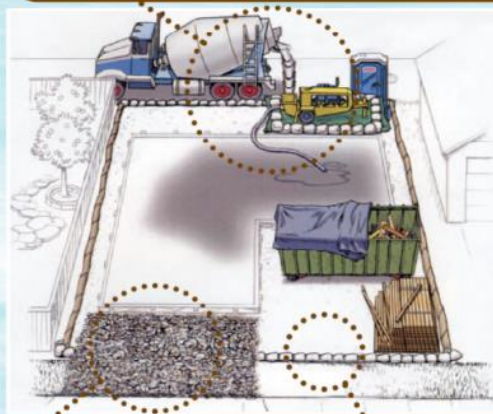
Disposal of "wet" construction materials should be handled in the washout area. This includes paint, stucco, and concrete. Use a plastic-lined pit to collect and contain liquids and prevent runoff into the street and gutter. The washout area must be checked and maintained daily to ensure compliance. Washout material must be disposed of properly.

Dirt and Grading

Stockpiled dirt and gravel must be stored onsite and covered. Dust control shall be maintained throughout all phases of construction. During the rainy season (October 1 – April 30) additional gravel, bags, tarps, and visqueen must be stored onsite for emergency repair.

Concrete Trucks/Pumpers

Pumpers must be surrounded by perimeter controls, such as gravel bags, sandbags, and straw wattles. Tarps also must be placed beneath concrete pumpers at all times to prevent spills into the street and sidewalk. Residual materials must be cleaned up as well. Trucks and pumpers are required to clean out in the washout area, not in the street, catch basin or a wheelbarrow.



Perimeter Controls

Gravel bags, silt fences and straw wattles are acceptable perimeter controls and must be used to control site run-on and runoff. Avoid running over perimeter controls with vehicles or heavy equipment, as they can damage the materials. Keep extra absorbent materials and/or a wet/dry vacuum onsite to quickly pick up spills. Sites must be checked and maintained daily.

Tracking Controls

All entrances/exits on the site must have coarse gravel (1" to 3" angular material) and/or steel shaker plates to limit offsite sediment tracking. Hand or mechanical sweeping must also be used as needed to clean up any material that gets tracked offsite.

Dumpsters and Portable Toilets

Dumpsters must be covered with a tarp at the end of each work day and area around dumpster must be kept clean. Dumpsters must be located onsite unless an Encroachment Permit is obtained for placement in street. Portable toilets must have drip pans and be placed onsite so that any spills do not discharge offsite.

Building Materials/Staging Areas

Construction materials (including landscape materials) must be stored onsite. Building materials must be covered when not in use to prevent runoff caused by wind or rain.



Liquid Storage

Paints, solvents, fuel and other liquids stored onsite must be contained and covered. It is illegal for contractors to wash out or dump liquid waste or residue in the street, storm drain or sewer. Use washouts or hazardous material drums to contain liquid waste and residue and dispose of this material properly.

Training & Education by CIA/HOAs

- Incorporate requirements into contract documents. Your local storm water program manager can give samples.
- Train and Retrain Employees & Contractors
 - Safety
 - BMPs
 - Water Prohibitions and Requirements
 - Chemical Management
- Educate Residents
 - Association Newsletter
 - Association Webpage
 - Other Mailings

Conclusions

- Countywide program has been developed to improve water quality
- CIA/HOA maintenance activities can **IMPACT** water quality
- CIAs/HOAs should implement BMPs to reduce pollutants
- BMP fact sheets provide guidance

Resources

For more information:

Visit www.ocwatersheds.com

or

Visit your local city's environmental
website

City Contacts

Aliso Viejo
Moy Yahya
949/279-4385
myahya@cityofalisoviejo.com

Laguna Niguel
Hal Ghafari
949/362-4384
HGHafari@cityoflagunaniguel.org

Laguna Hills
Amber Shah
949/707-2657
Ashah@lagunahillsca.gov

Mission Viejo
Hazel McIntosh
949/470-8458
hmcintosh@cityofmissionviejo.org

Thank You!

Thank you for attending and
learning how you can help!