

IRRIGATION PROCEDURES

To Improve Irrigation Efficiency

Toni Monzón

Bilingual Training Institute - BTI

WHAT IS THE POWER OF WATER?



WHAT IS THE POWER OF WATER?

- Essential for the establishment and longevity of landscape plants.













04/03/2013 09:17

WHAT IS THE POWER OF WATER?



WHAT IS THE POWER OF WATER?

- In time, it deteriorates every surface it comes in contact with.





POOR MANAGEMENT & DEFECTIVE SYSTEMS

1. Costly deterioration of the community.





POOR MANAGEMENT & DEFECTIVE SYSTEMS

2. Creation of high-risk areas.



INFORMED DECISION



INFORMED DECISION

- Determine ALL the expenses caused by the inefficiencies of the system:

1. To *justify the investment* in the irrigation system.



INFORMED DECISION

- Determine ALL the expenses caused by the inefficiencies of the system:

2. *To estimate the payback period.*



OBVIOUS DETERIORATION

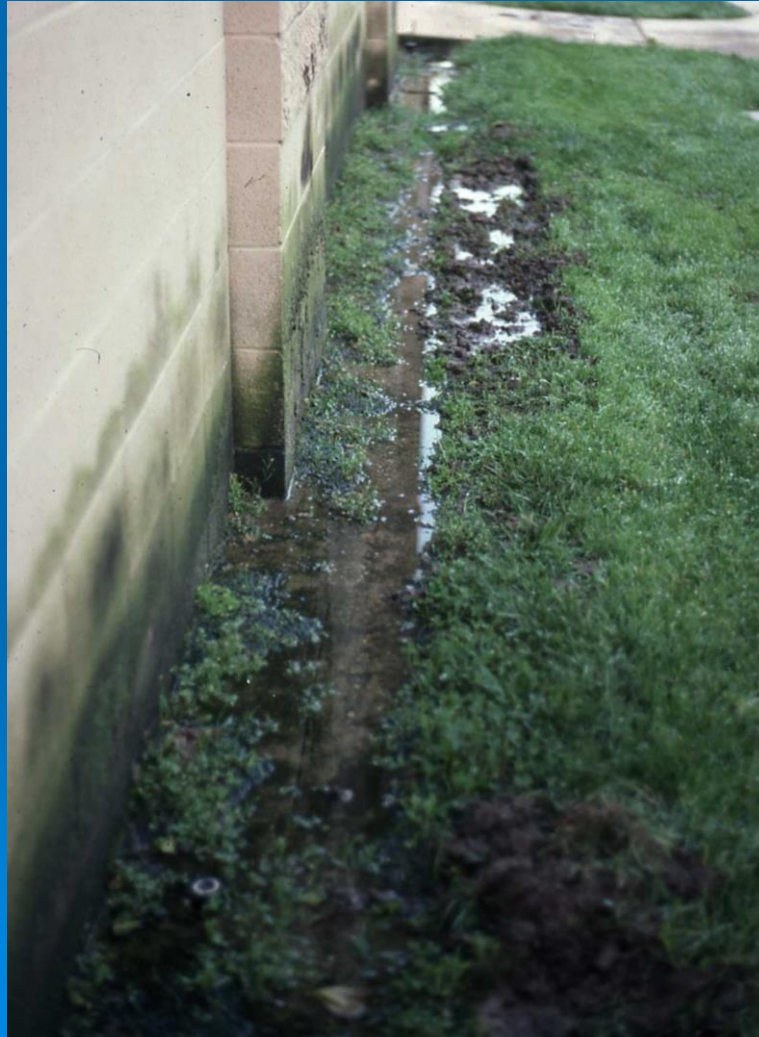
- Just look around the property!



OBVIOUS DETERIORATION



OBVIOUS DETERIORATION



OBVIOUS DETERIORATION



OBVIOUS DETERIORATION



OBVIOUS DETERIORATION



OBVIOUS DETERIORATION



OBVIOUS DETERIORATION



OBVIOUS DETERIORATION



OBVIOUS DETERIORATION



OBVIOUS DETERIORATION



OBVIOUS DETERIORATION



OBVIOUS DETERIORATION



OBVIOUS DETERIORATION



OBVIOUS DETERIORATION



OBVIOUS DETERIORATION



OBVIOUS DETERIORATION



OBVIOUS DETERIORATION



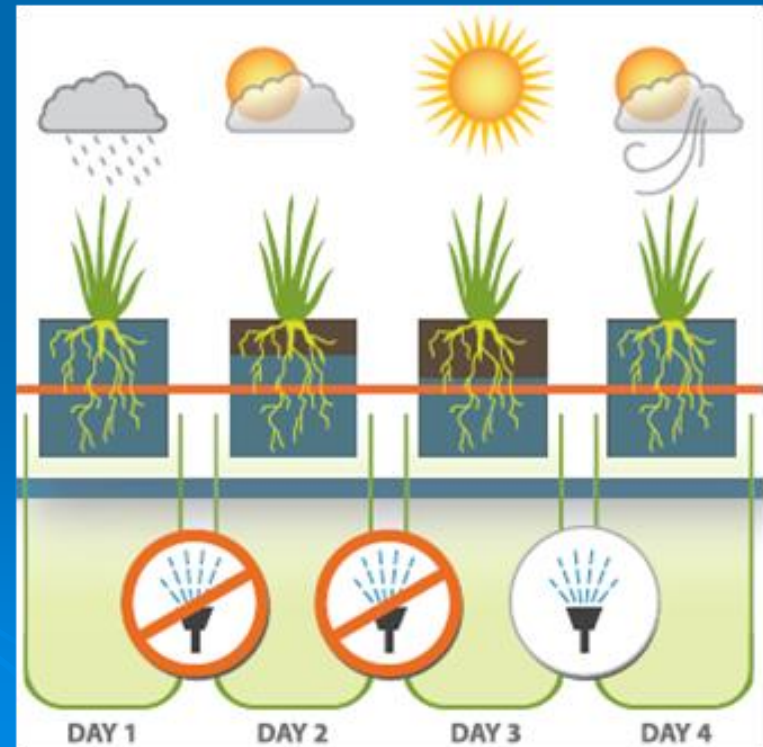
PREVENTION



PREVENTION

- Severe damage and liability can be prevented through:

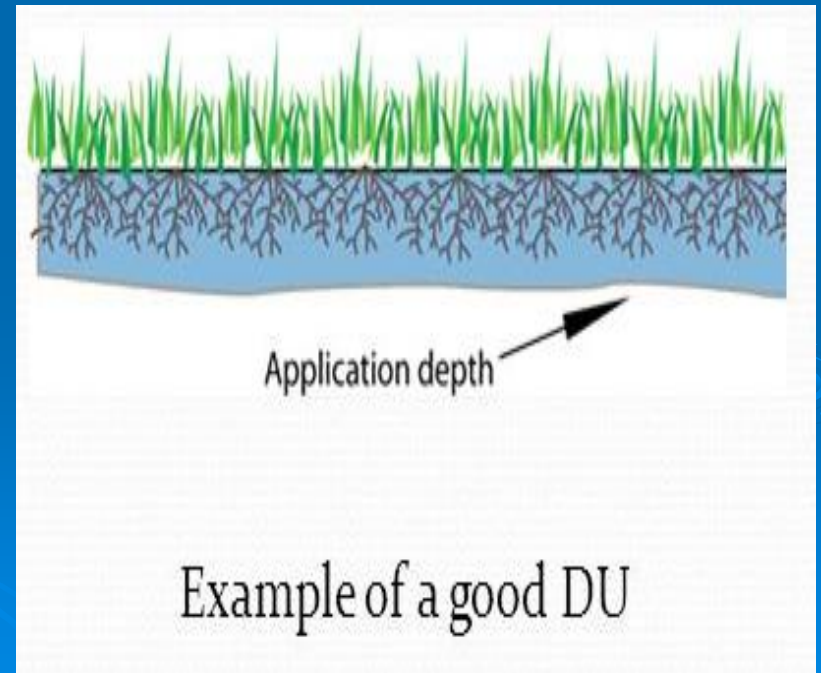
1. *Sound irrigation practices.*



PREVENTION

- Severe damage and liability can be prevented through:

2. *Efficient irrigation systems.*



1. PREVENTION:

SOUND IRRIGATION PRACTICES



SMART CONTROLLERS

- Does their installation result on sound irrigation practices?



SMART CONTROLLERS

➤ Their installation does NOT result on sound irrigation practices:

- *UNLESS...*

SMART CONTROLLERS

1. Each valve zone is surveyed to collect the required field data.



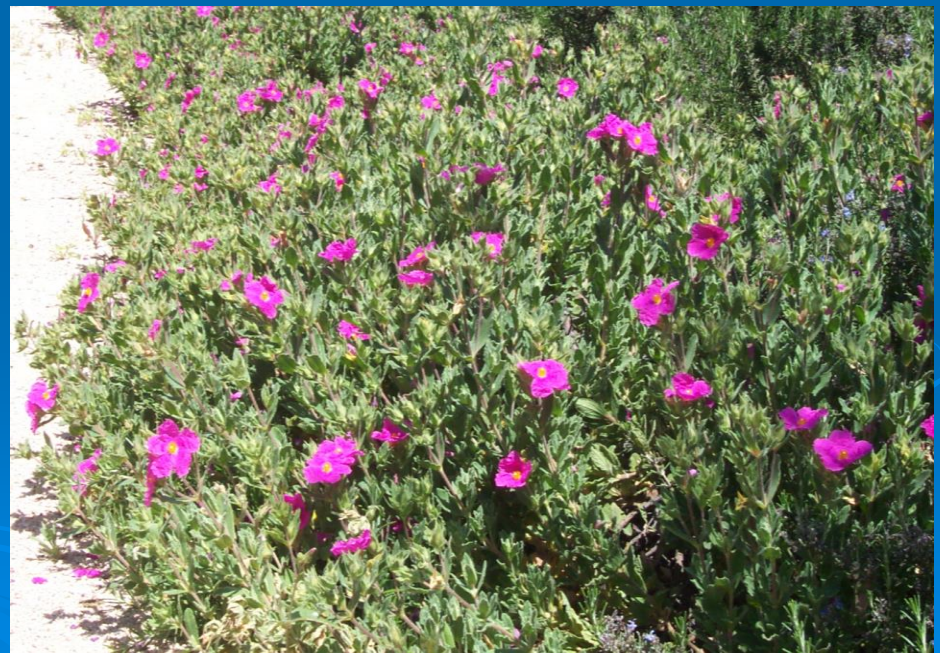
REQUIRED FIELD DATA

- 1) *Water requirements of landscape plants.*



REQUIRED FIELD DATA

2) *Microclimate.*



REQUIRED FIELD DATA

3) *Root zone depth.*



REQUIRED FIELD DATA

4) *Type of soil.*



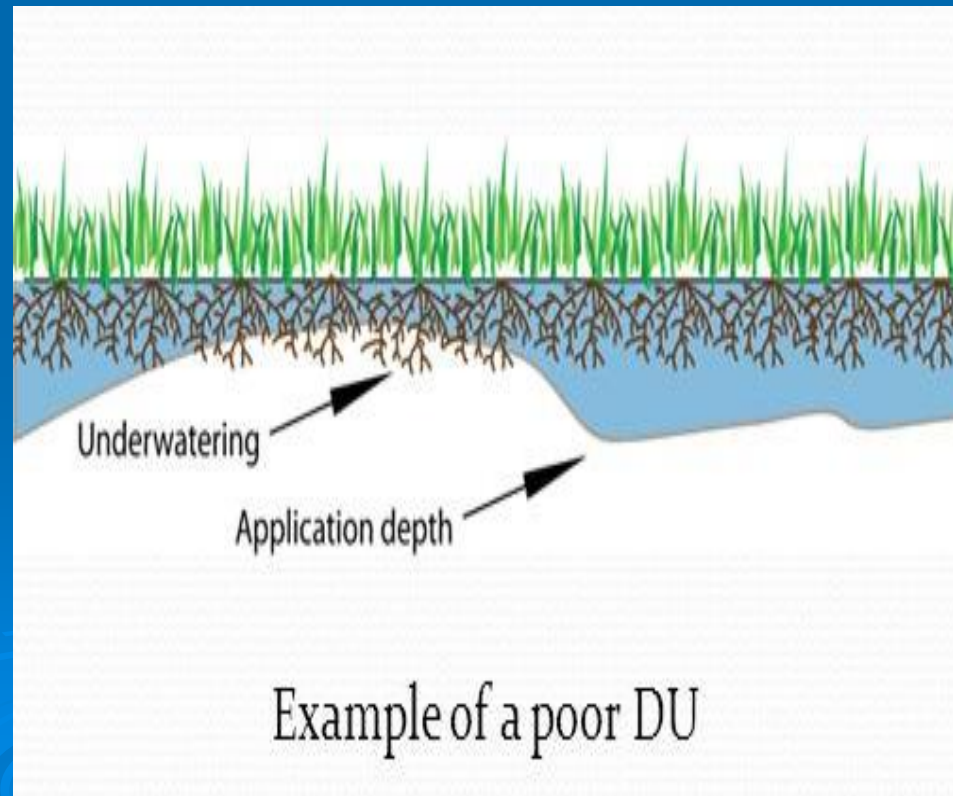
REQUIRED FIELD DATA

5) *Type of irrigation system.*



REQUIRED FIELD DATA

6) *System efficiency.*



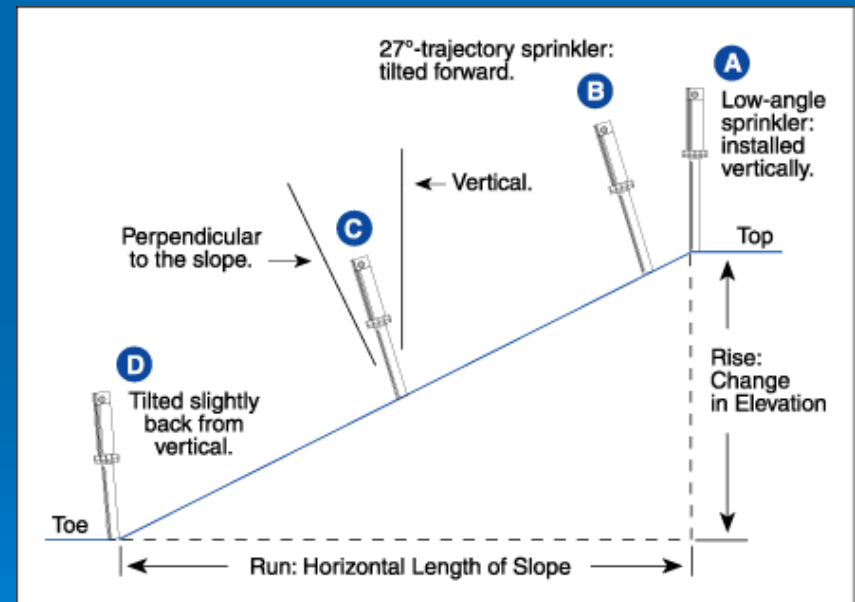
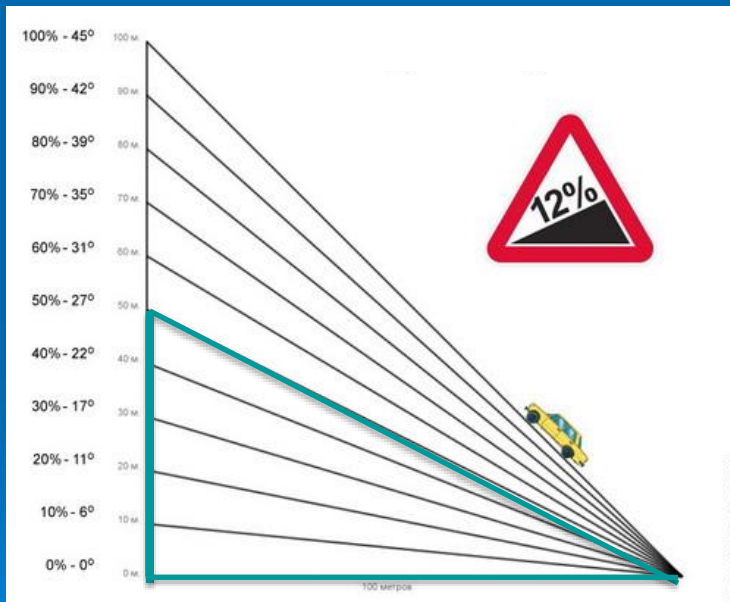
REQUIRED FIELD DATA

7) *System precipitation rate.*



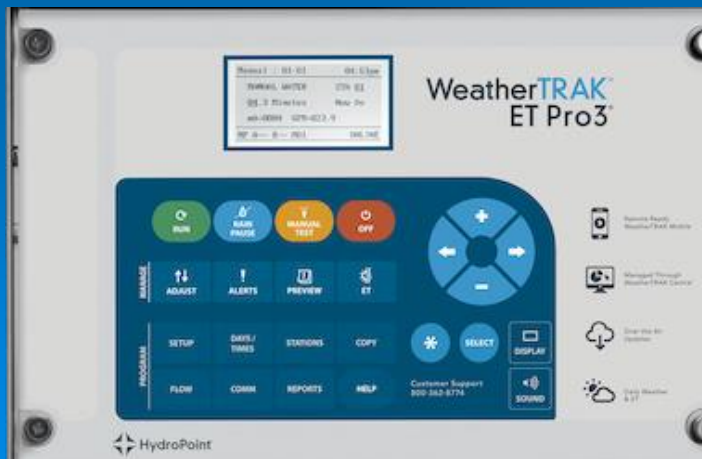
REQUIRED FIELD DATA

8) *Degree of slope / Sprinkler location*



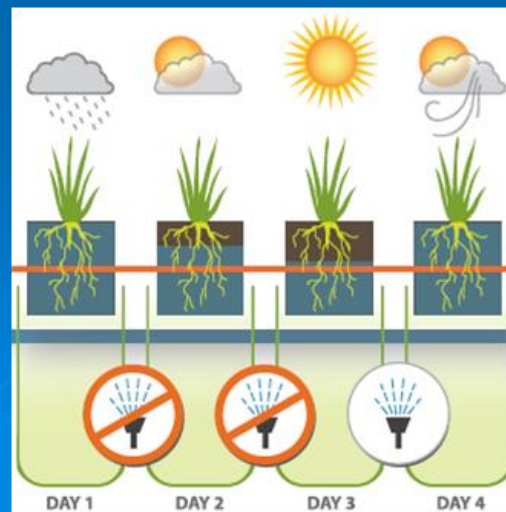
SMART CONTROLLERS

2. The field data is correctly programmed in the controller.



SMART CONTROLLERS

3. The irrigation schedules are monitored for possible input errors.



SMART CONTROLLERS

4. The irrigation system is inspected regularly to maintain its efficiency.



2. PREVENTION:

EFFICIENT IRRIGATION SYSTEMS



HIGH-EFFICIENCY TECHNOLOGY

- Does its installation increase the efficiency of irrigation systems?



HIGH-EFFICIENCY TECHNOLOGY

➤ Its installation does NOT increase the efficiency of irrigation systems:

- *UNLESS...*

HIGH-EFFICIENCY TECHNOLOGY

1. The system is designed and installed correctly.



HIGH-EFFICIENCY EQUIPMENT



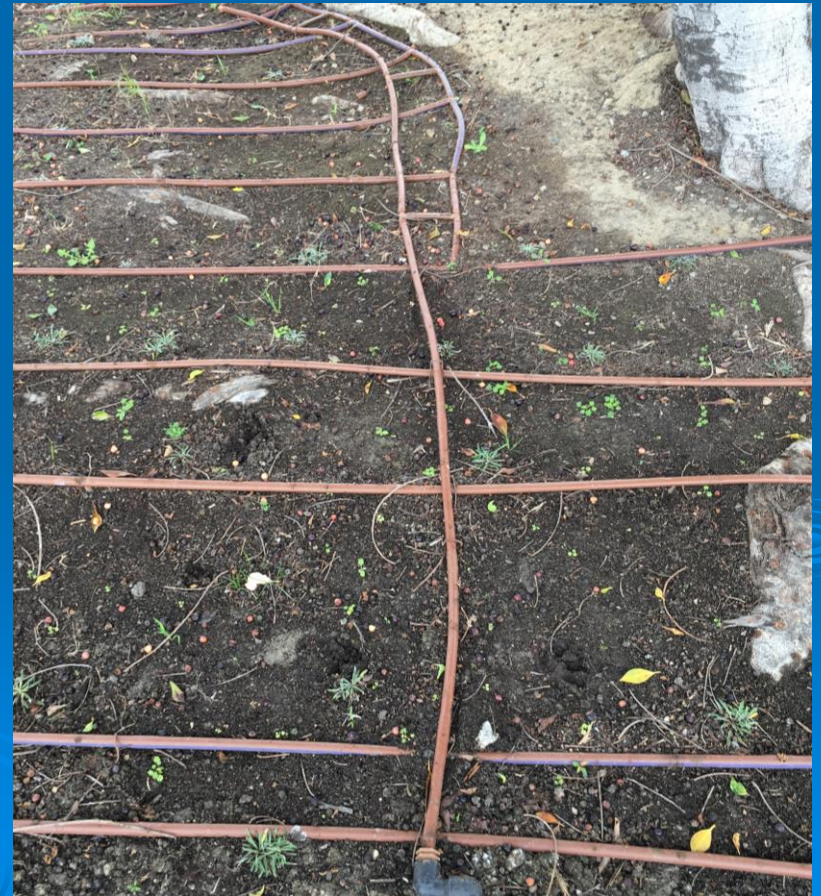
HIGH-EFFICIENCY EQUIPMENT



HIGH-EFFICIENCY EQUIPMENT



HIGH-EFFICIENCY EQUIPMENT



HIGH-EFFICIENCY EQUIPMENT



HIGH-EFFICIENCY EQUIPMENT



HIGH-EFFICIENCY TECHNOLOGY

2. The system is inspected regularly.



HIGH-EFFICIENCY EQUIPMENT



06/17/2010 07:36

HIGH-EFFICIENCY EQUIPMENT



2010

- Landscape renovations that do not address the irrigation system.



2019

- Landscape renovations that do not address the irrigation system.

