



moulton niguel water district

2017 Cost of Service Study Update

October 18, 2017

Rate Study Timeline

Dec 2016

- Initial Rate & LRFPS Study Presentation

Jan-Mar 2017

- Final scheduled rate adjustment effective
- Award COS Peer Review
- MOU LRFPS Update

Apr-May 2017

- Budget Discussions
 - COS Revenue Requirements
 - FY 2017-18 Budget Workshop

Jun-Jul 2017

- Adopt FY 2017-18 Budget
- Revenue Plan
- Policy Discussion

7th 2017 LRFPS & Rate Study Discussion

Sept 2017

- Rate Workshop
- Begin stakeholder and community outreach

Oct-Nov 2017

- Ongoing stakeholder and community outreach
- Issue Prop. 218 Notice

Dec 2017

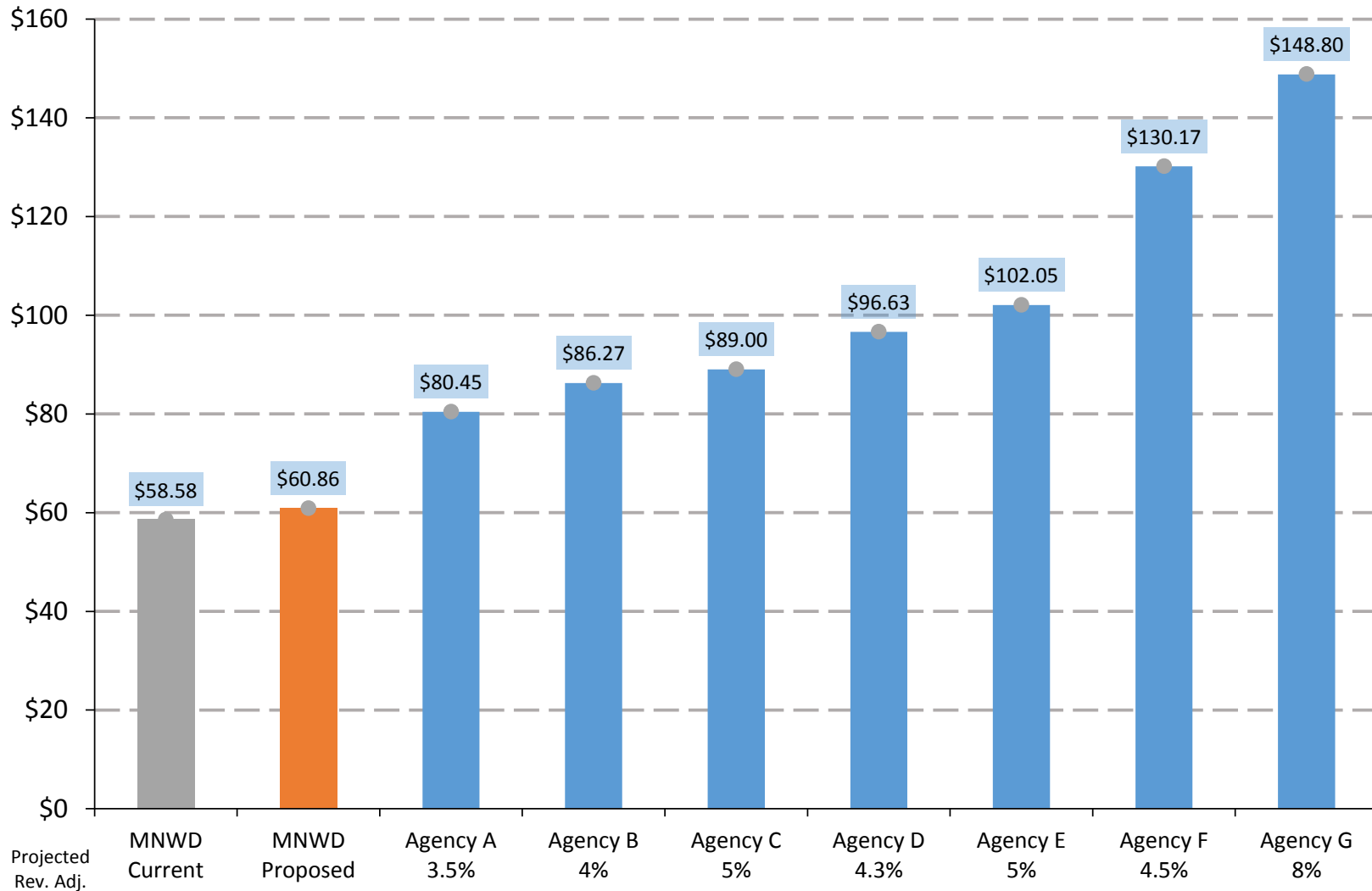
- Public Hearing
- Rate Adoption

Jan 2018

- Rates Effective Jan 1, 2018

South County Single Family Survey

Average Monthly Bill Comparison



Proposed Rate Structure Updates

- Per-Person Wastewater Charge
 - Need to accurately capture SOCWA cost escalation
- Align fixed and variable costs with revenues
 - Phase in over 4-year rate plan
- 55 GPCD
 - Consistent with Increasing Indoor Use Efficiency



moulton niguel water district

Direct Install Turf Replacement Program

October 18, 2017

Overview

- Background
- Turf Removal Benefits
- Turf Removal Potential
- Pilot Project
- Recommendation



Turf Removal Rebate Program

- Drought-tolerant landscaping
- \$2 per square foot
- Immensely popular
- 5,000,000 ft² of turf removed



Photo Source: Lambly Nursery via Gardenista, 2015;
Linda McDonald-Cash, 2015

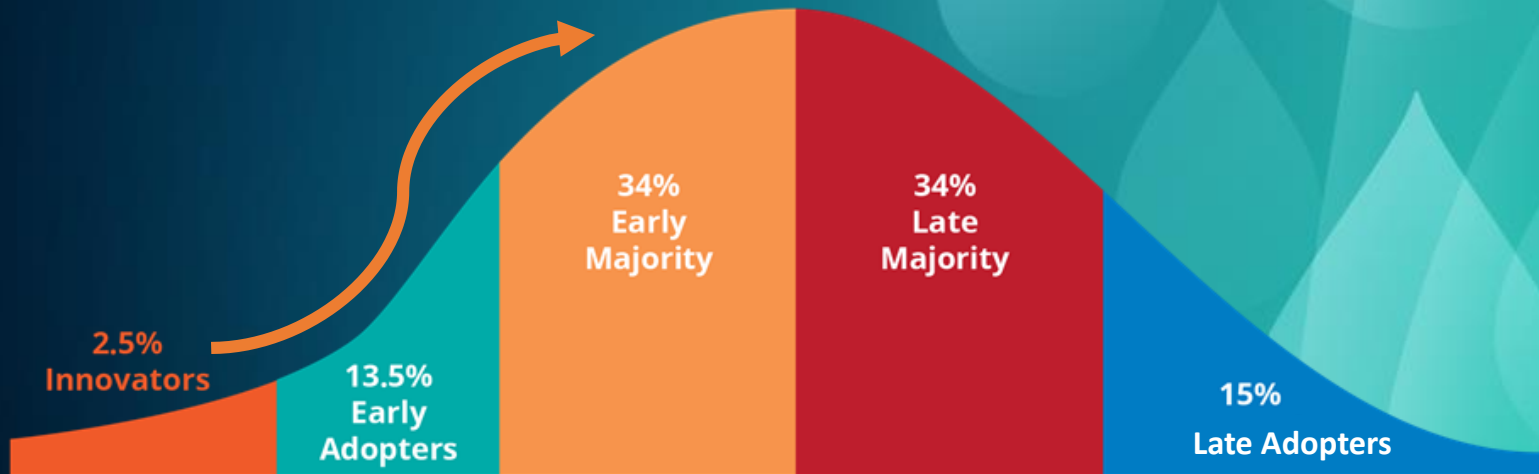
Outdoor Efficiency

- Cost-effective compared to alternative water supplies
- Must convert to efficient irrigation system
- UC Riverside study of MNWD service area
- Annual average savings of 45.7 gallons per ft²



Landscape Market Transformation

- Turf replacement neighborhood effect
- Recent study shows 1 : 2 ratio (rebate : no rebate)
- Opportunities still available to the District
- Support market transformation with high quality landscapes



Increasing Participation

- UCR suggests programs should be 'easy'
- Remove barriers to participation
 - Care & maintenance of new landscapes
 - Plant, designer, & contractor selection
 - Receipt management
 - 10-12 week wait for rebate check



Pilot Direct Install Turf Replacement Program

- Promote beautiful California natives
- Watershed-wise landscapes with multiple benefits
- Support landscape market transformation
- Resolves programmatic issues
- Start small, scale later



Pilot Direct Install Turf Replacement Program

(see handout)

- Residential Landscape Workshop
- Pre-Qualifying Irrigation & Site Assessment
- Landscape Design
- Turf Removal
- Landscape Installation
- Post-Installation Site Assessment



Pilot Direct Install Program – Site #1 (Before)



Pilot Direct Install Program – Site #1 (After)



Full Scale Direct Install Turf Replacement Program

- Pre-solicitation survey to 300+ OC Contractors
- Tree of Life Nursery, Inc.
- High quality landscapes with form and function
- Easy for customers from start to finish
- Predictable costs & maintenance



Recommendation

- 2 Year agreement budgeted at \$603,000
- Transform 240 residential landscapes
- Award contract to Tree of Life Nursery, Inc.



Direct Install Turf Removal Program
Start to Finish = 2 months



Attend Landscape Workshop



Contractor completes site assessment and customer completes plant selection, and landscape design with contractor support



Contractor completes turf removal



Customer education



Contractor installs new landscape

Turf Removal Rebate Program
Start to Finish = 6 months



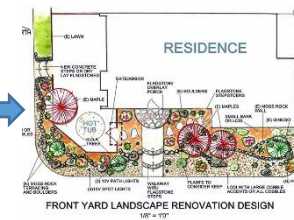
Plant selection



Select landscape contractor



Create landscape design and site plan



Get HOA approval



Review & agree to program terms and conditions



Create a profile and complete online application



Submit 3 photos and a site plan



Pre-Inspection



Wait for letter to proceed



Complete turf removal



Transform landscape



Notify MWDOC project is complete and submit receipts



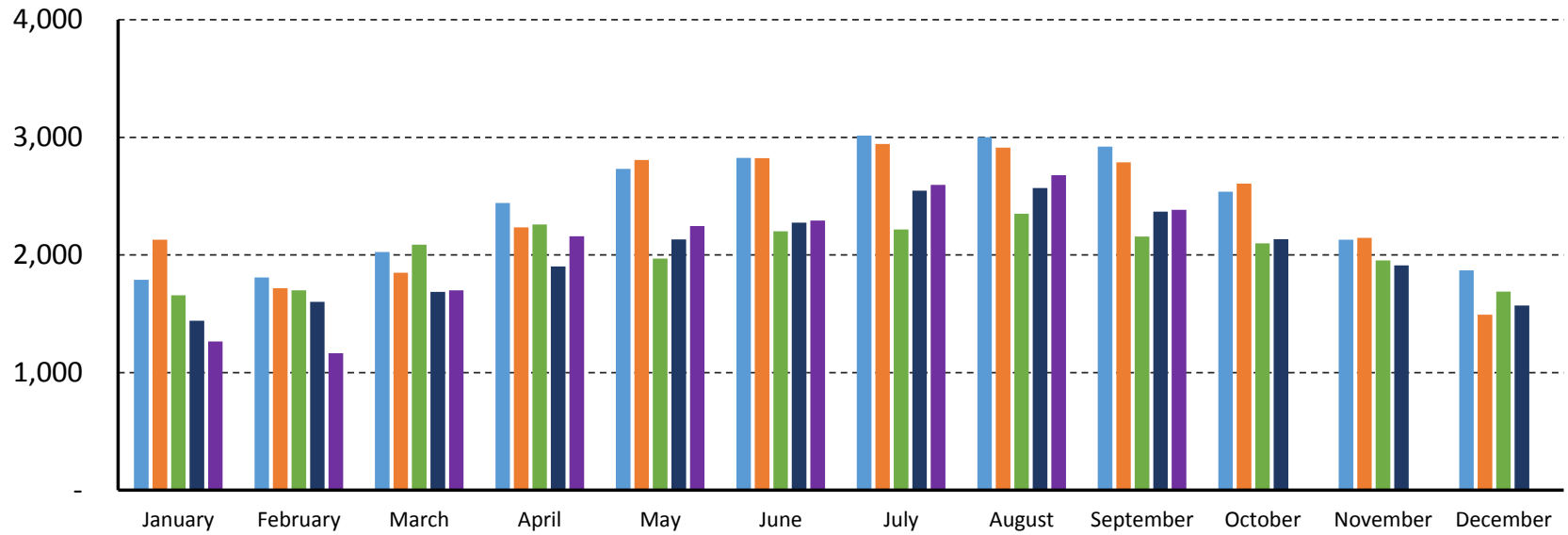
Post-Inspection



Rebate check issued in 10-12 weeks

AF

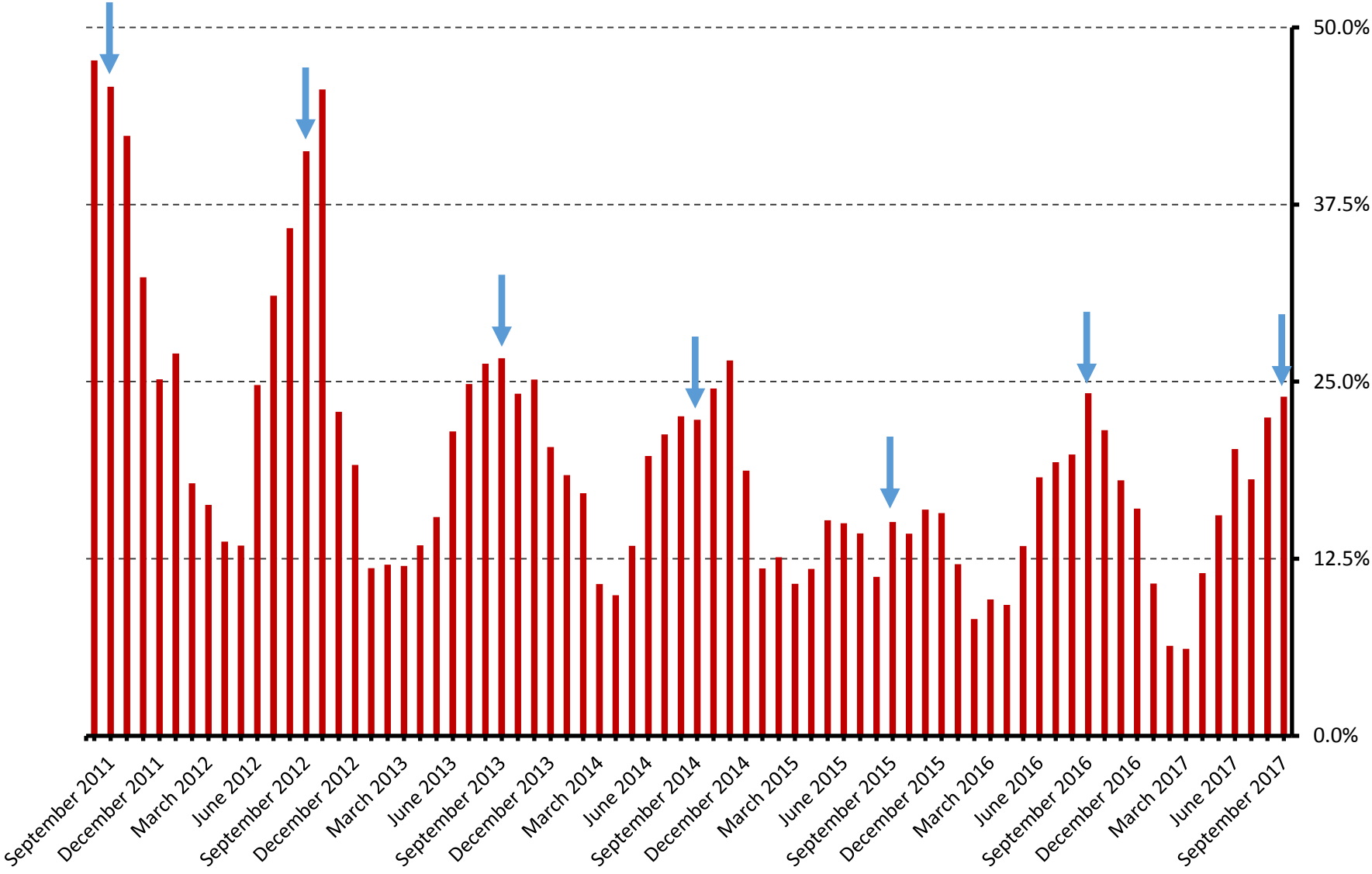
Historical Monthly MNWD Water Purchases & Evapotranspiration



Year	ET (Inches)												
2013	2.54	2.88	4.08	4.79	5.99	6.07	5.81	6.53	5.26	3.92	2.52	2.49	
2014	2.82	2.64	4.09	5.54	6.39	6.45	6.54	6.23	5.21	3.94	3.16	1.91	
2015	2.52	3.02	4.96	5.31	4.48	5.75	5.69	6.27	5	3.88	3.24	2.35	
2016	1.87	3.82	3.98	5.16	4.63	5.77	6.77	5.97	4.51	3.23	2.75	1.89	
2017	1.96	1.75	4.24	5.17	4.7	5.24	6.36	6.18	4.8				

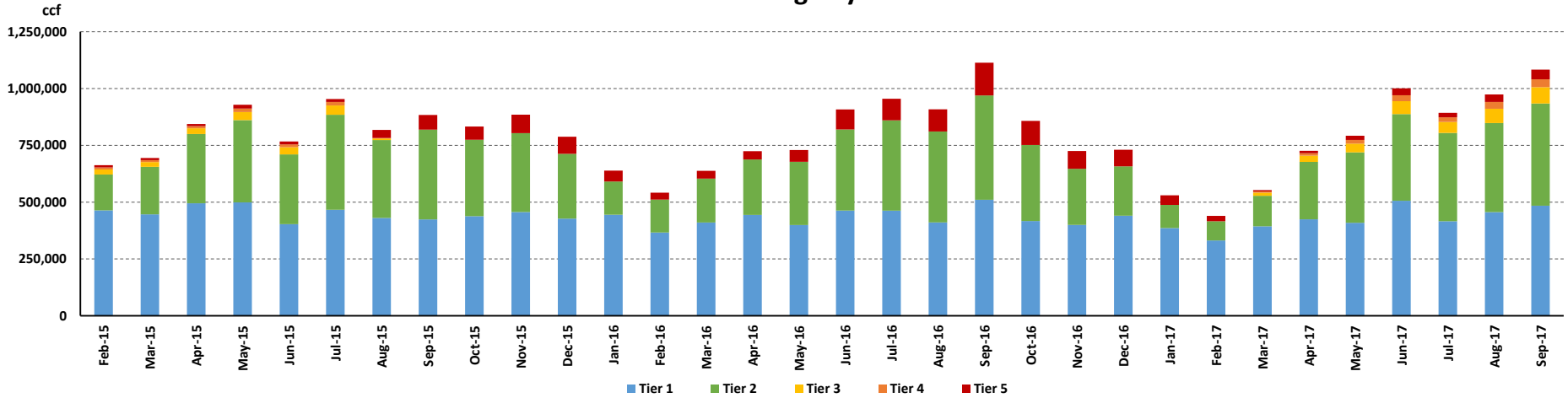
October 18, 2017

Single Family Residential Accounts Above Tier 2



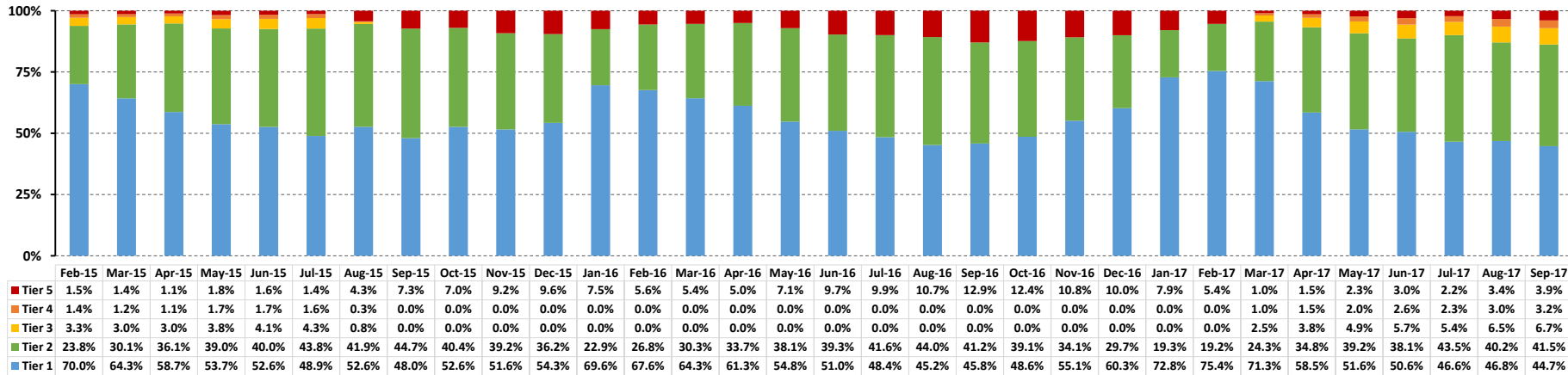
October 18, 2017

Potable Usage by Tier

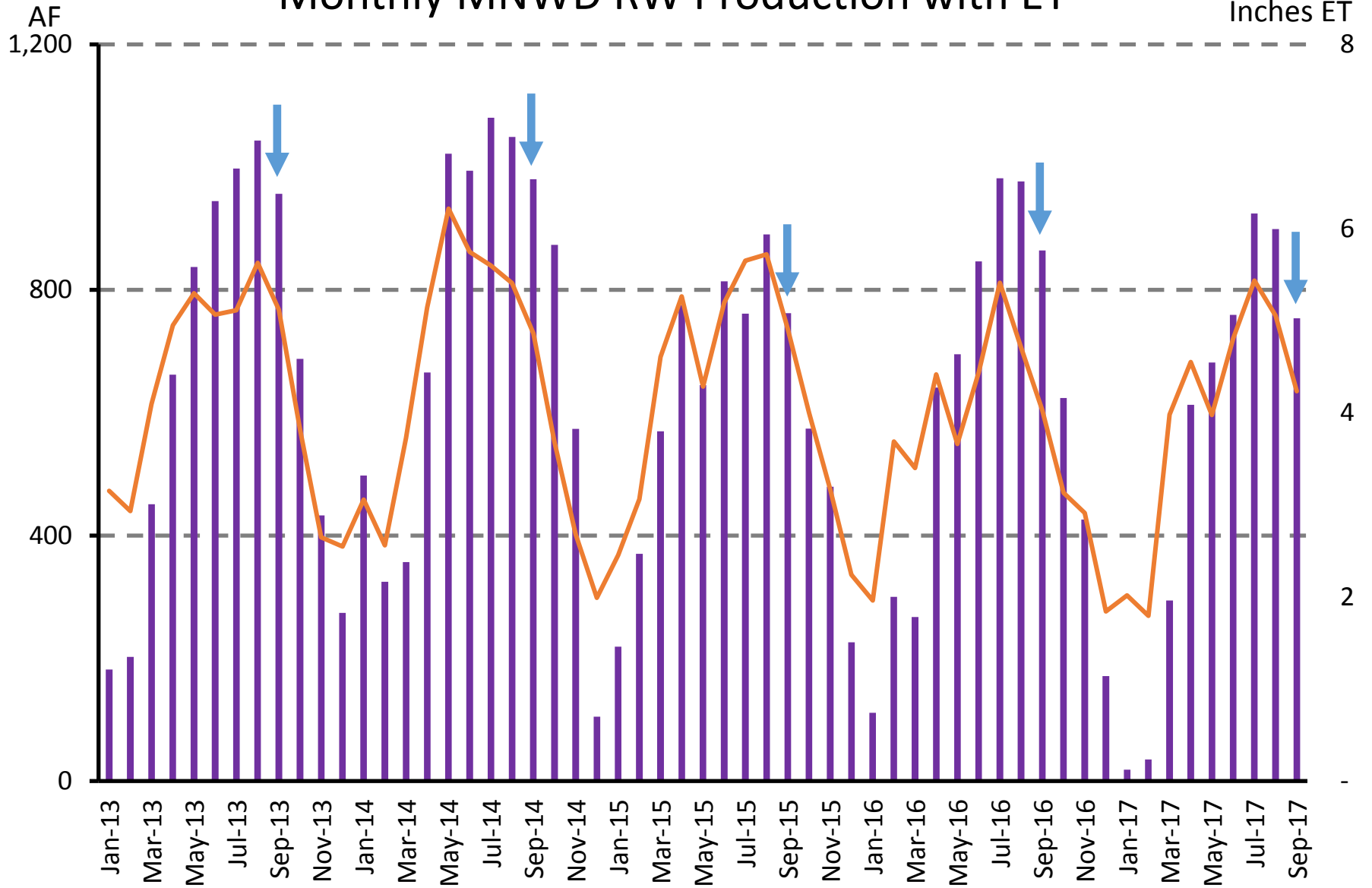


AF in Tier 3, 4, 5	94	89	101	154	131	159	102	148	134	187	173	110	70	78	83	119	202	218	224	331	243	180	167	96	54	56	112	167	260	204	289	343
--------------------	----	----	-----	-----	-----	-----	-----	-----	-----	-----	-----	-----	----	----	----	-----	-----	-----	-----	-----	-----	-----	-----	----	----	----	-----	-----	-----	-----	-----	-----

Percent Potable Usage by Tier



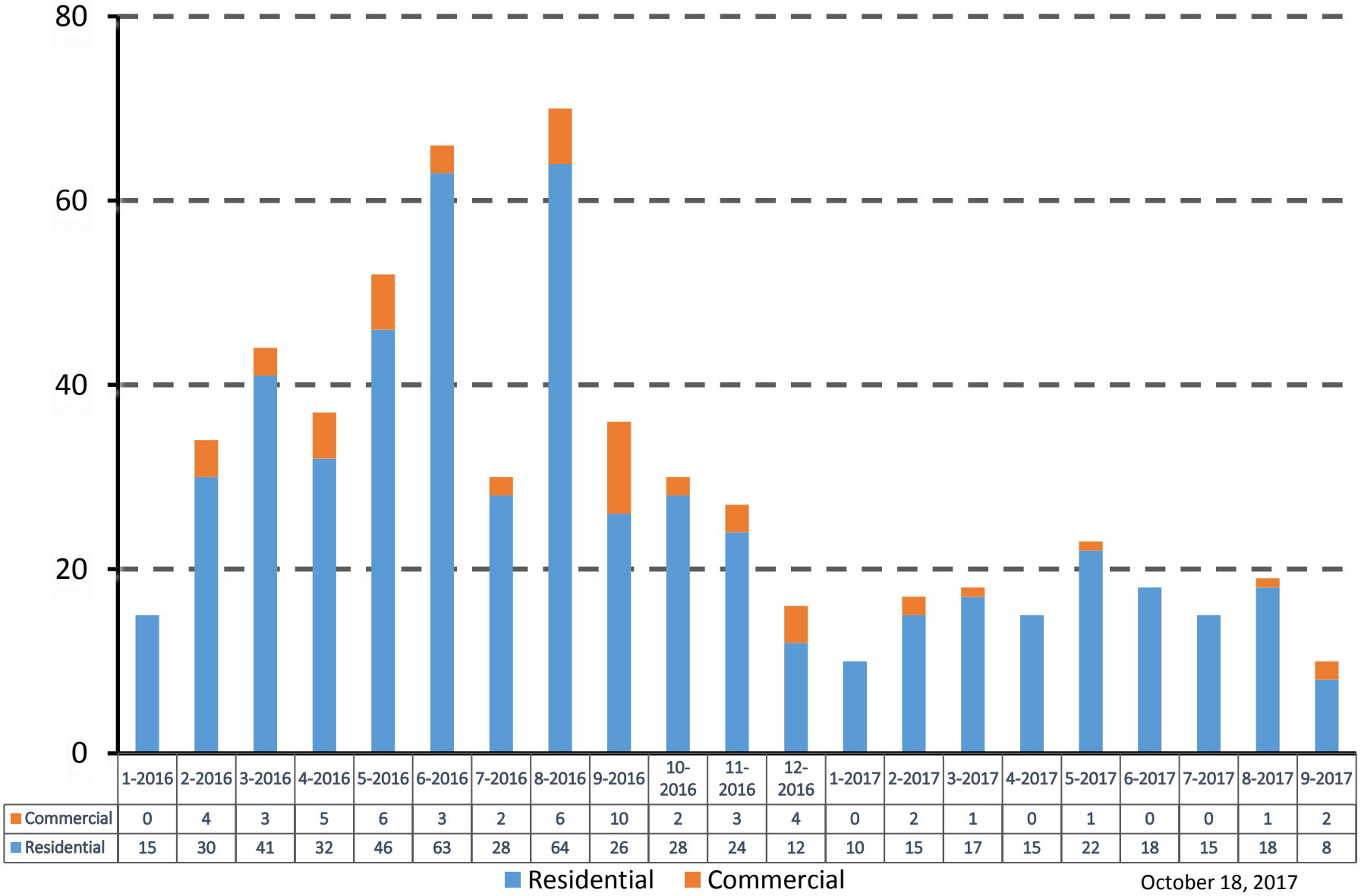
Monthly MNWD RW Production with ET



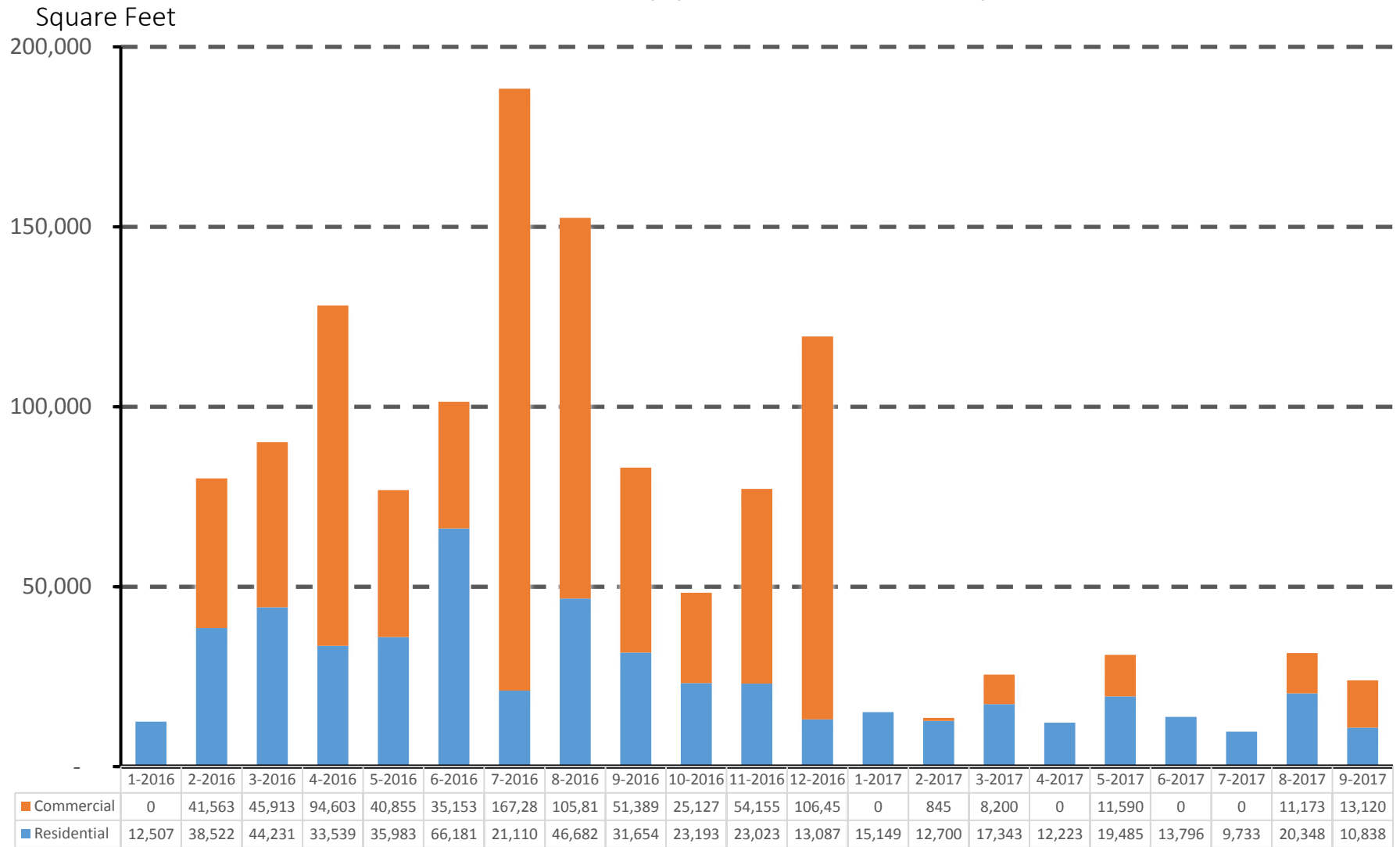
October 18, 2017

Total Turf Removal Applications by Month

Applications

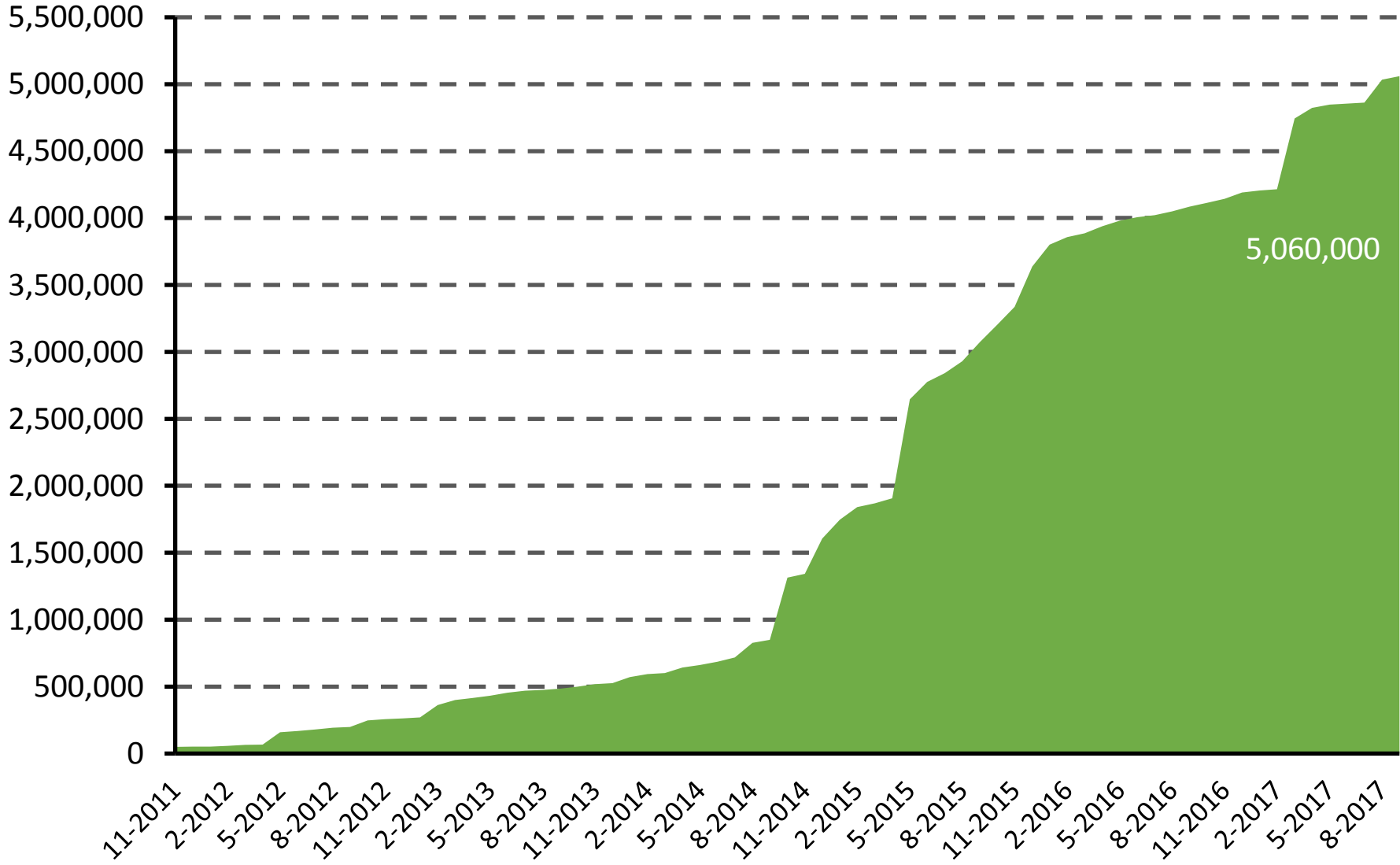


Total Turf Removal Application Size by Month



Square Feet

Total Turf Removed



October 18, 2017