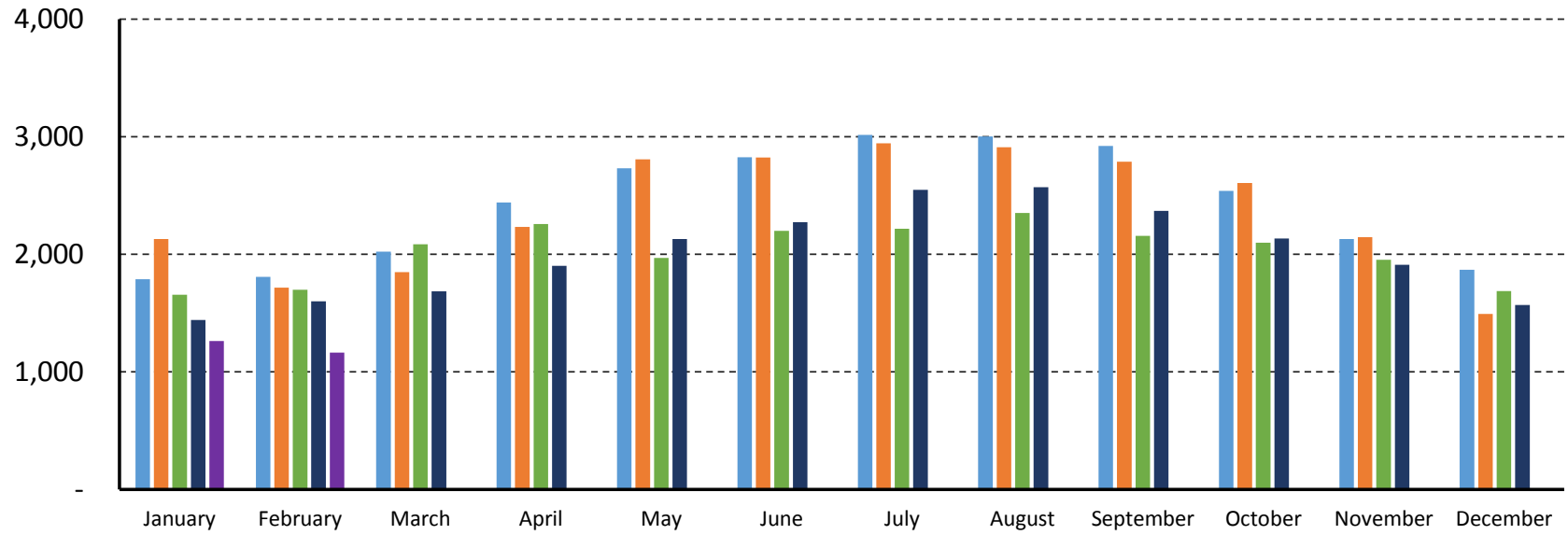


AF

Historical Monthly MNWD Water Purchases & Evapotranspiration

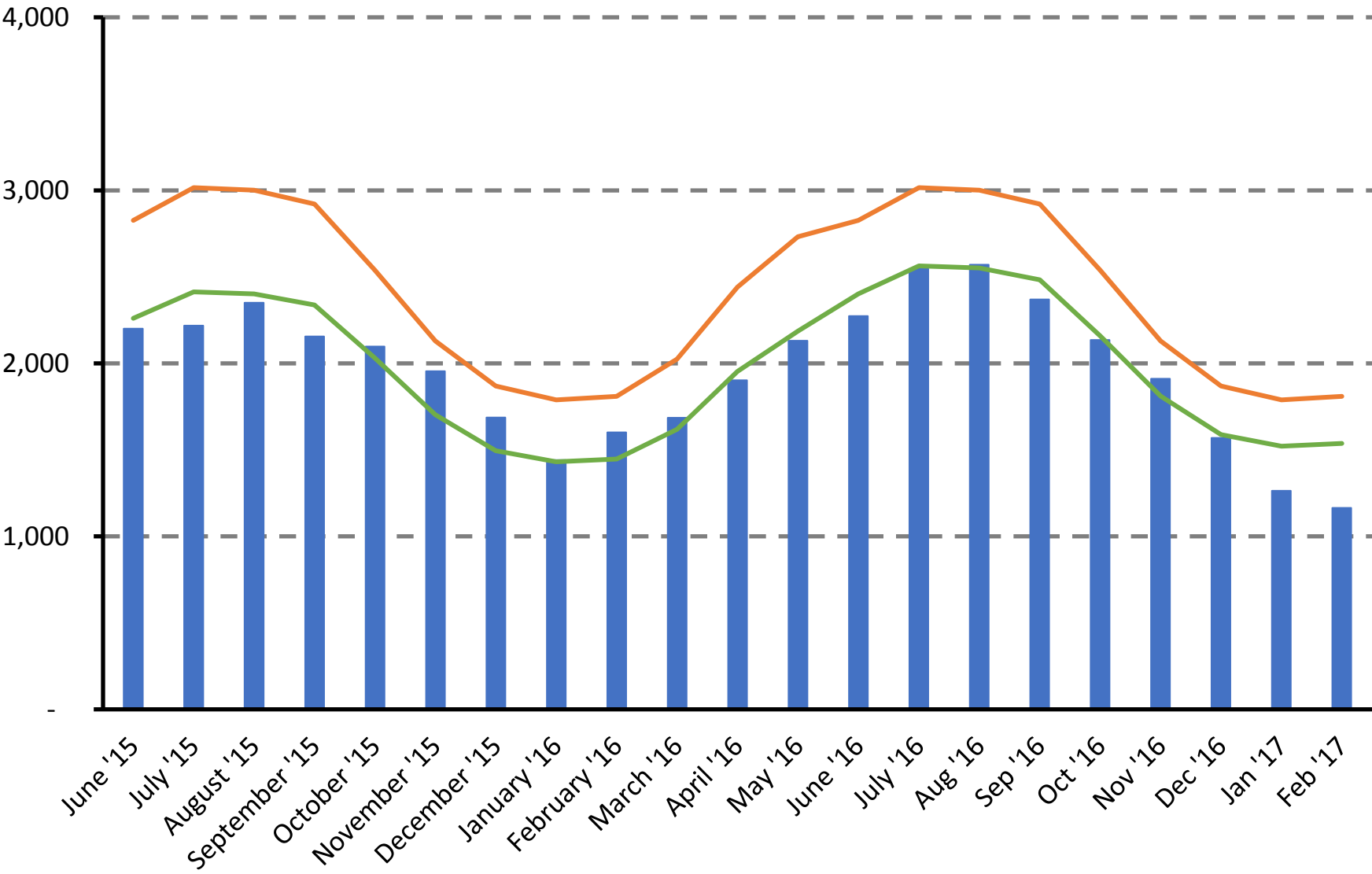


| Year | ET (Inches) | | | | | | | | | | | | |
|------|-------------|------|------|------|------|------|------|------|------|------|------|------|--|
| 2013 | 2.54 | 2.88 | 4.08 | 4.79 | 5.99 | 6.07 | 5.81 | 6.53 | 5.26 | 3.92 | 2.52 | 2.49 | |
| 2014 | 2.82 | 2.64 | 4.09 | 5.54 | 6.39 | 6.45 | 6.54 | 6.23 | 5.21 | 3.94 | 3.16 | 1.91 | |
| 2015 | 2.52 | 3.02 | 4.96 | 5.31 | 4.48 | 5.75 | 5.69 | 6.27 | 5 | 3.88 | 3.24 | 2.35 | |
| 2016 | 1.87 | 3.82 | 3.98 | 5.16 | 4.63 | 5.77 | 6.77 | 5.97 | 4.51 | 3.23 | 2.75 | 1.89 | |
| 2017 | 1.96 | 1.75 | | | | | | | | | | | |

March 15, 2017

SWRCB Monthly Target & MNWD Water Purchases

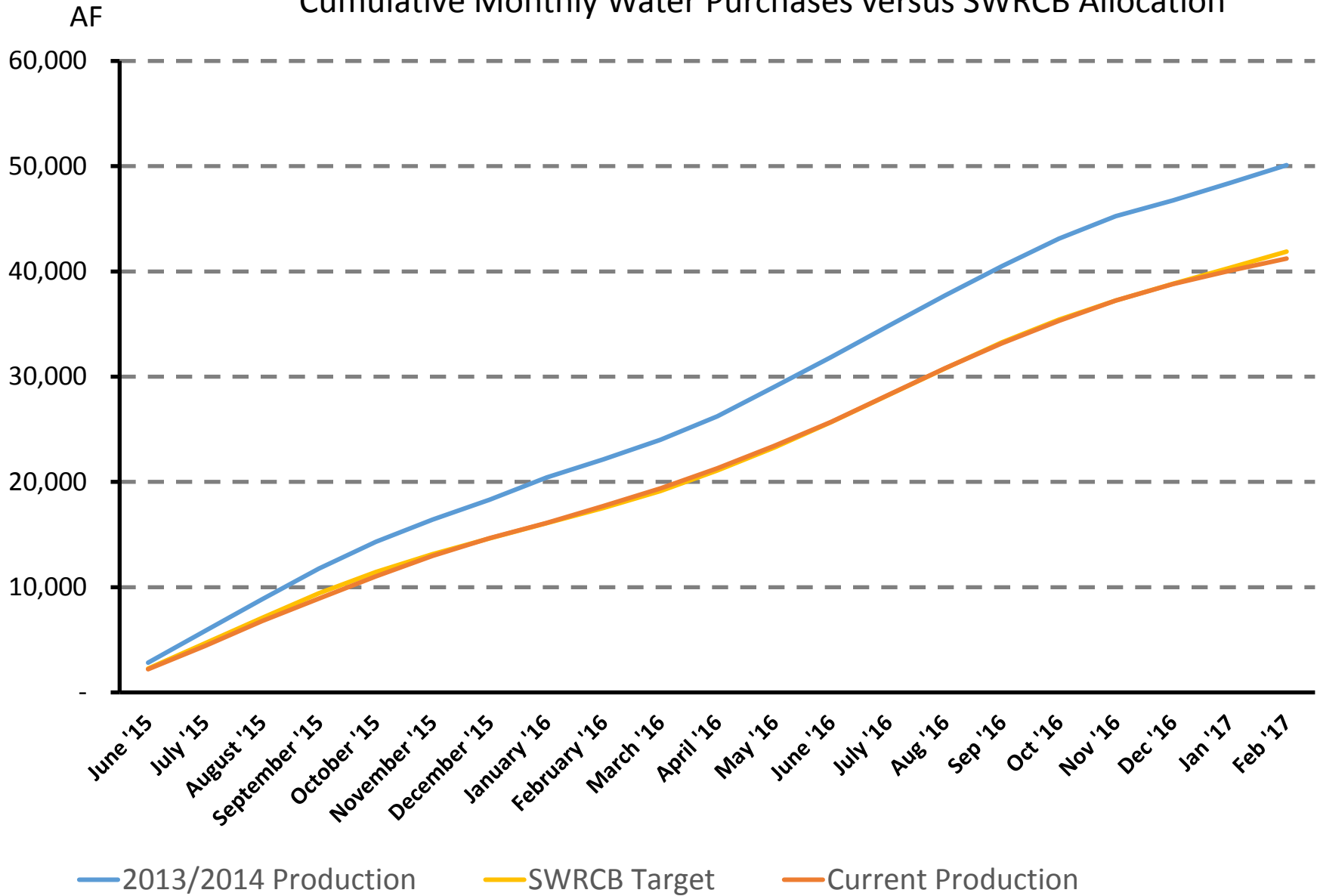
AF



■ Current Production
 — 2013 Production
 — SWRCB Target

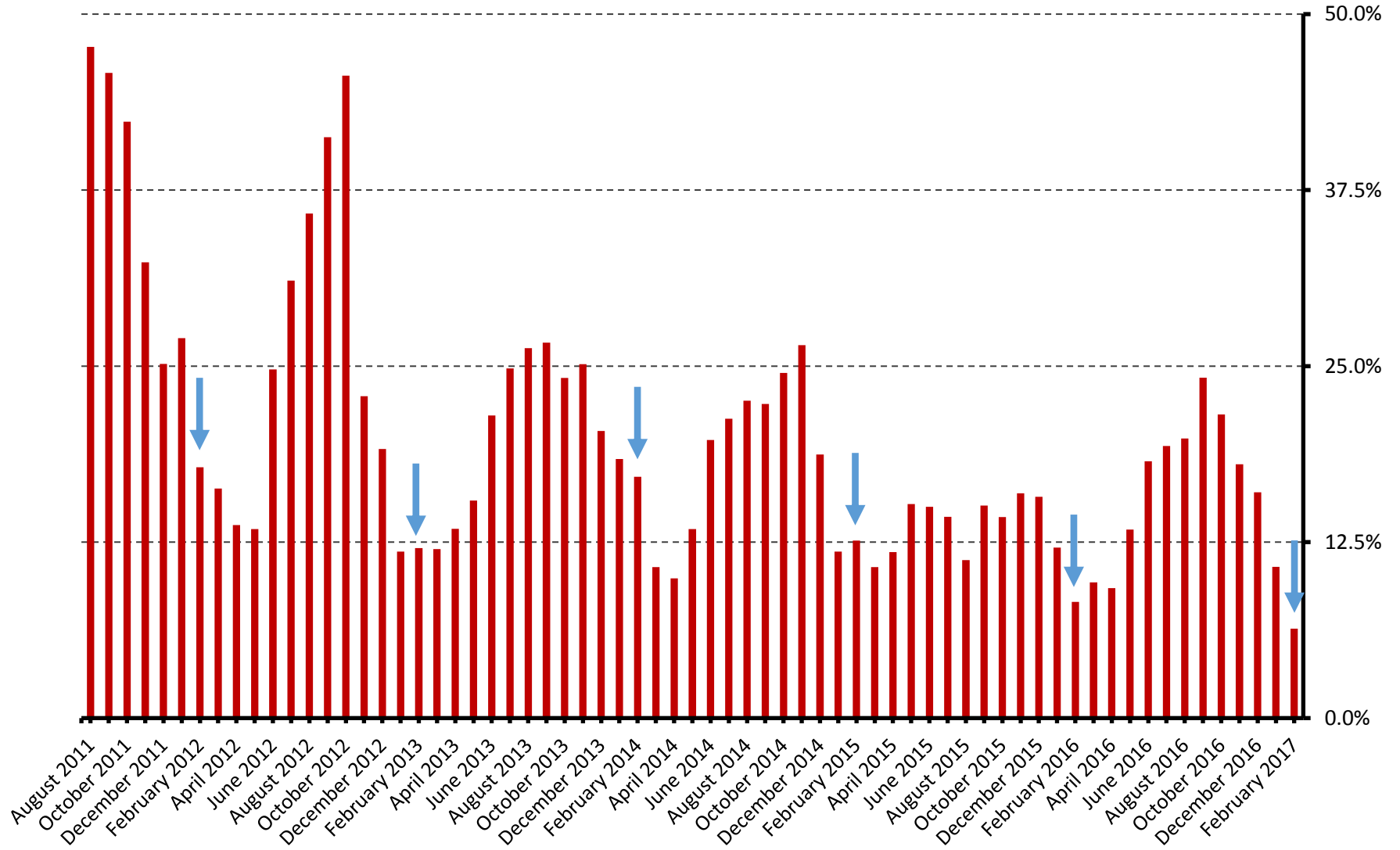
March 15, 2017

Cumulative Monthly Water Purchases versus SWRCB Allocation



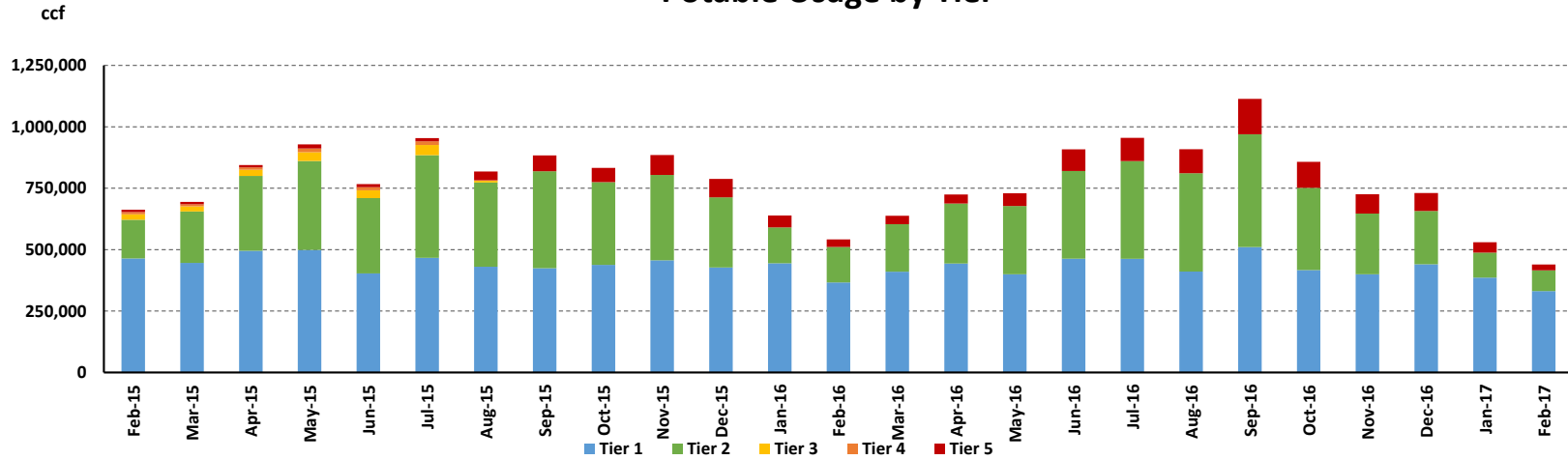
March 15, 2017

Single Family Residential Accounts Above Tier 2



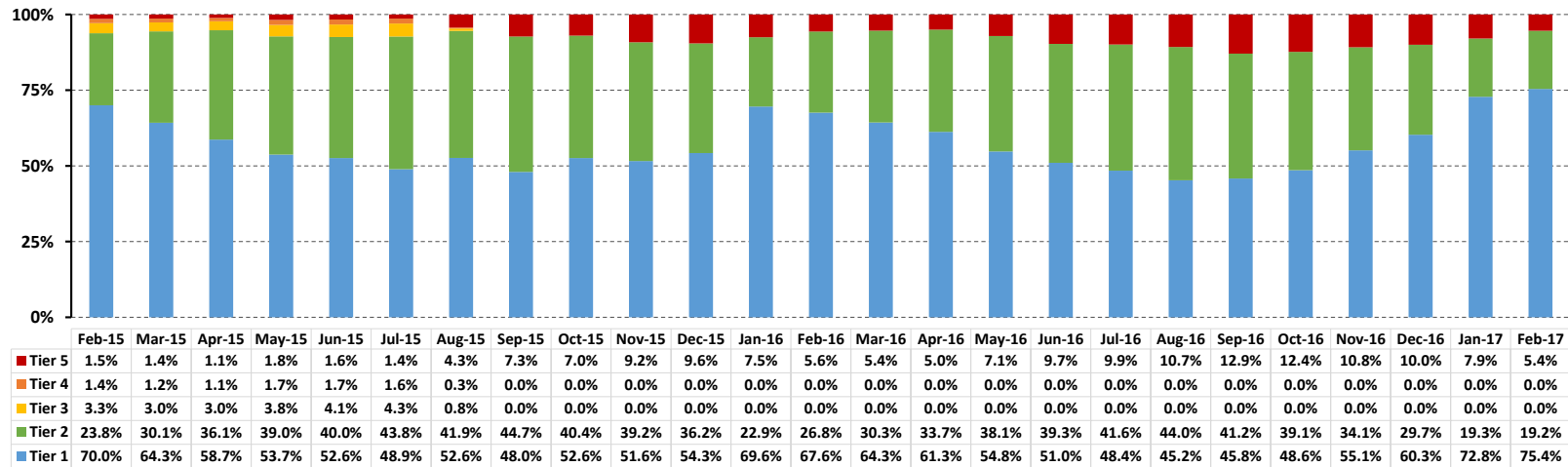
March 15, 2017

Potable Usage by Tier



| | | | | | | | | | | | | | | | | | | | | | | | | | |
|--------------------|----|----|-----|-----|-----|-----|-----|-----|-----|-----|-----|-----|----|----|----|-----|-----|-----|-----|-----|-----|-----|-----|----|----|
| AF in Tier 3, 4, 5 | 94 | 89 | 101 | 154 | 131 | 159 | 102 | 148 | 134 | 187 | 173 | 110 | 70 | 78 | 83 | 119 | 202 | 218 | 224 | 331 | 243 | 180 | 167 | 96 | 54 |
|--------------------|----|----|-----|-----|-----|-----|-----|-----|-----|-----|-----|-----|----|----|----|-----|-----|-----|-----|-----|-----|-----|-----|----|----|

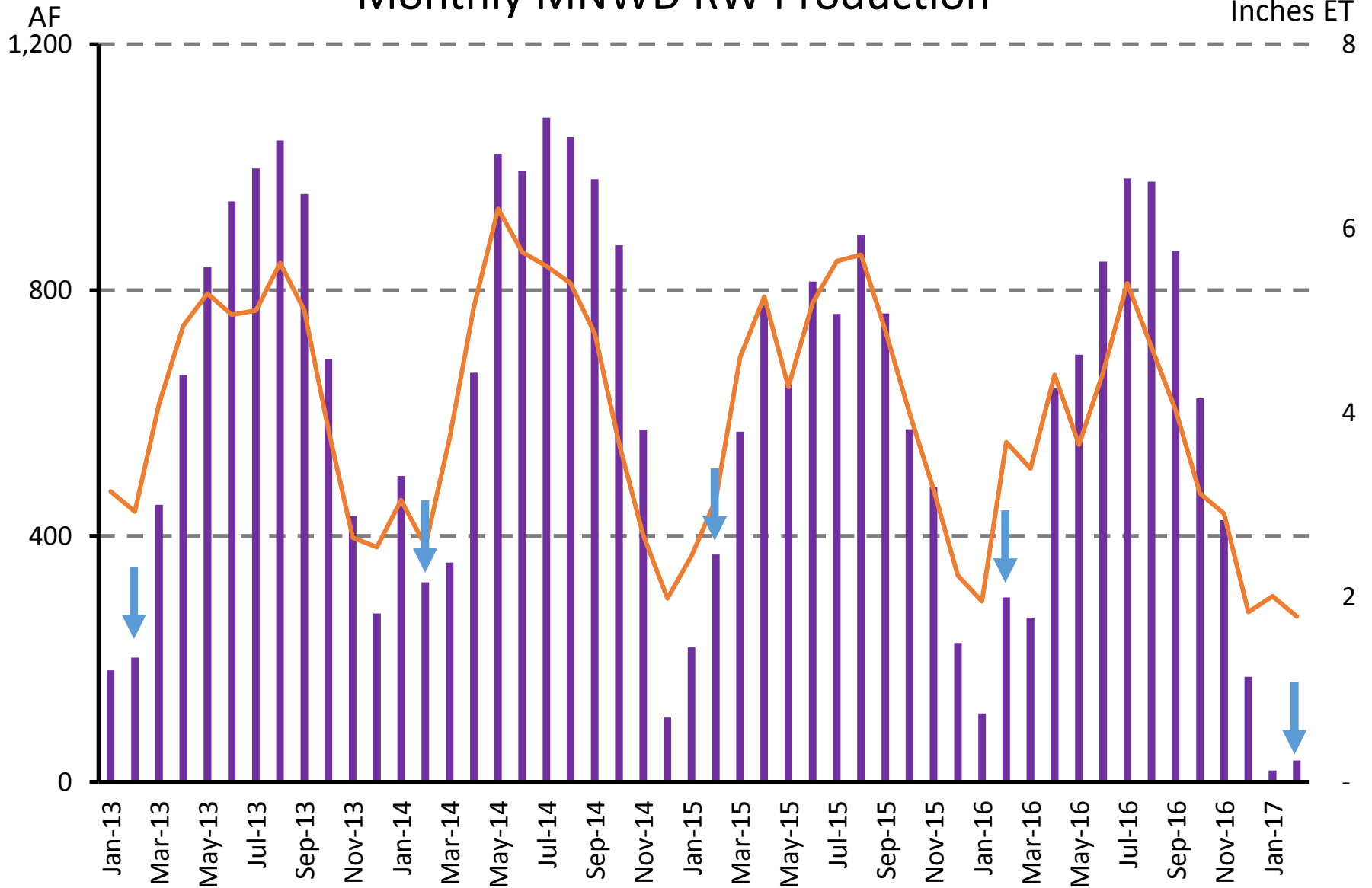
Percent Potable Usage by Tier



Tier 1 Tier 2 Tier 3 Tier 4 Tier 5

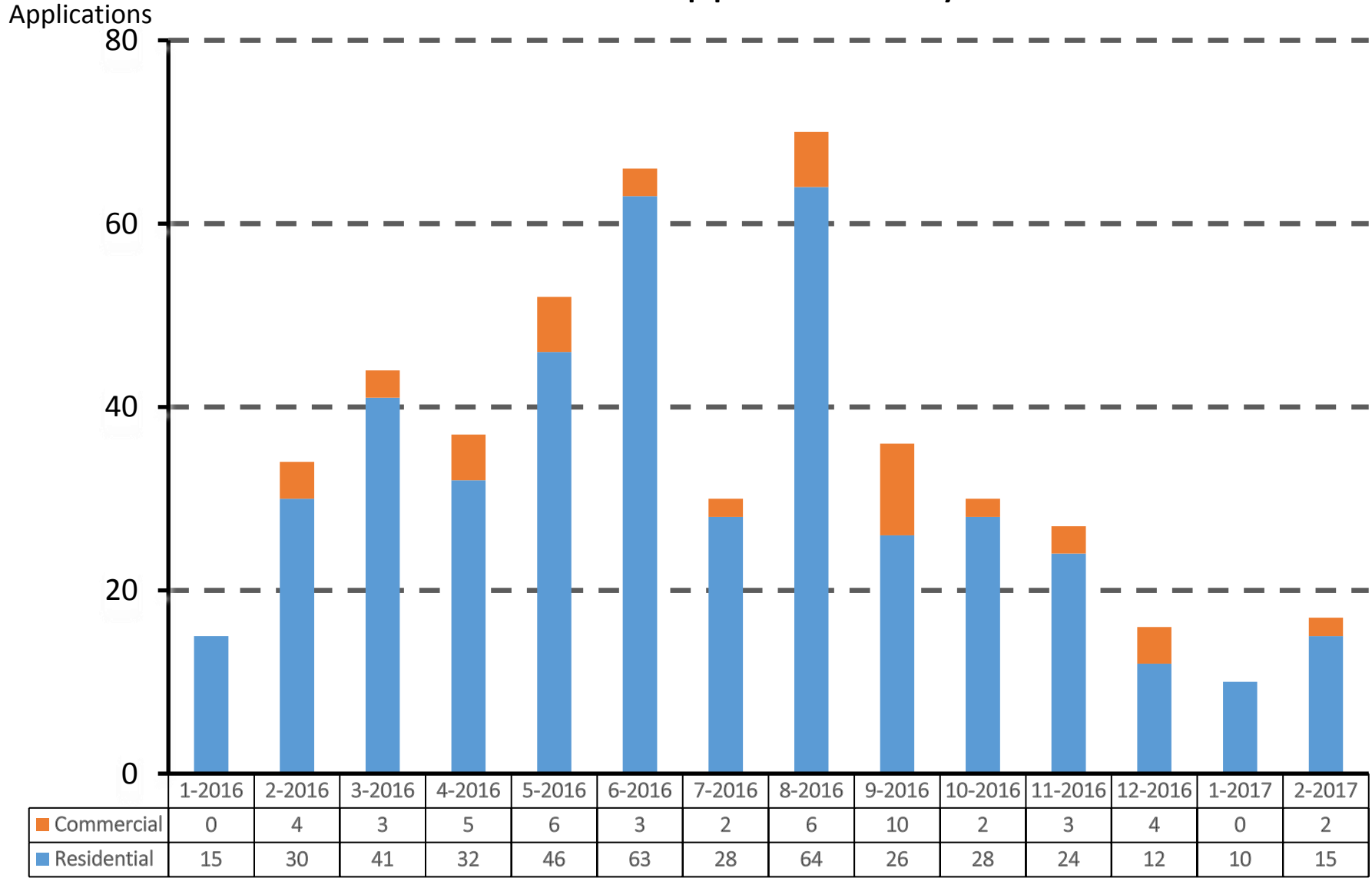
March 15, 2017

Monthly MNWD RW Production



March 15, 2017

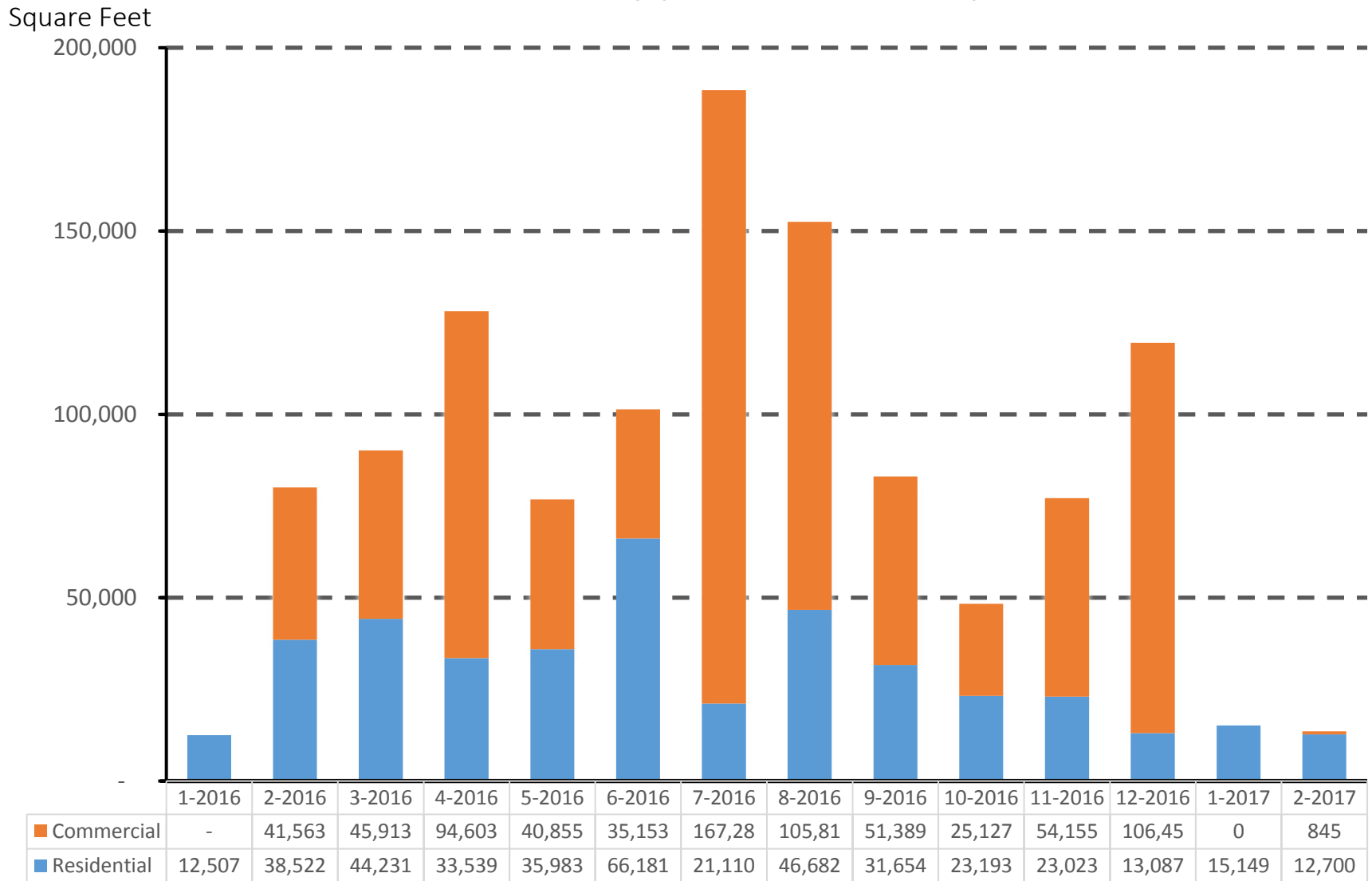
Total Turf Removal Applications by Month



■ Residential ■ Commercial

March 15, 2017

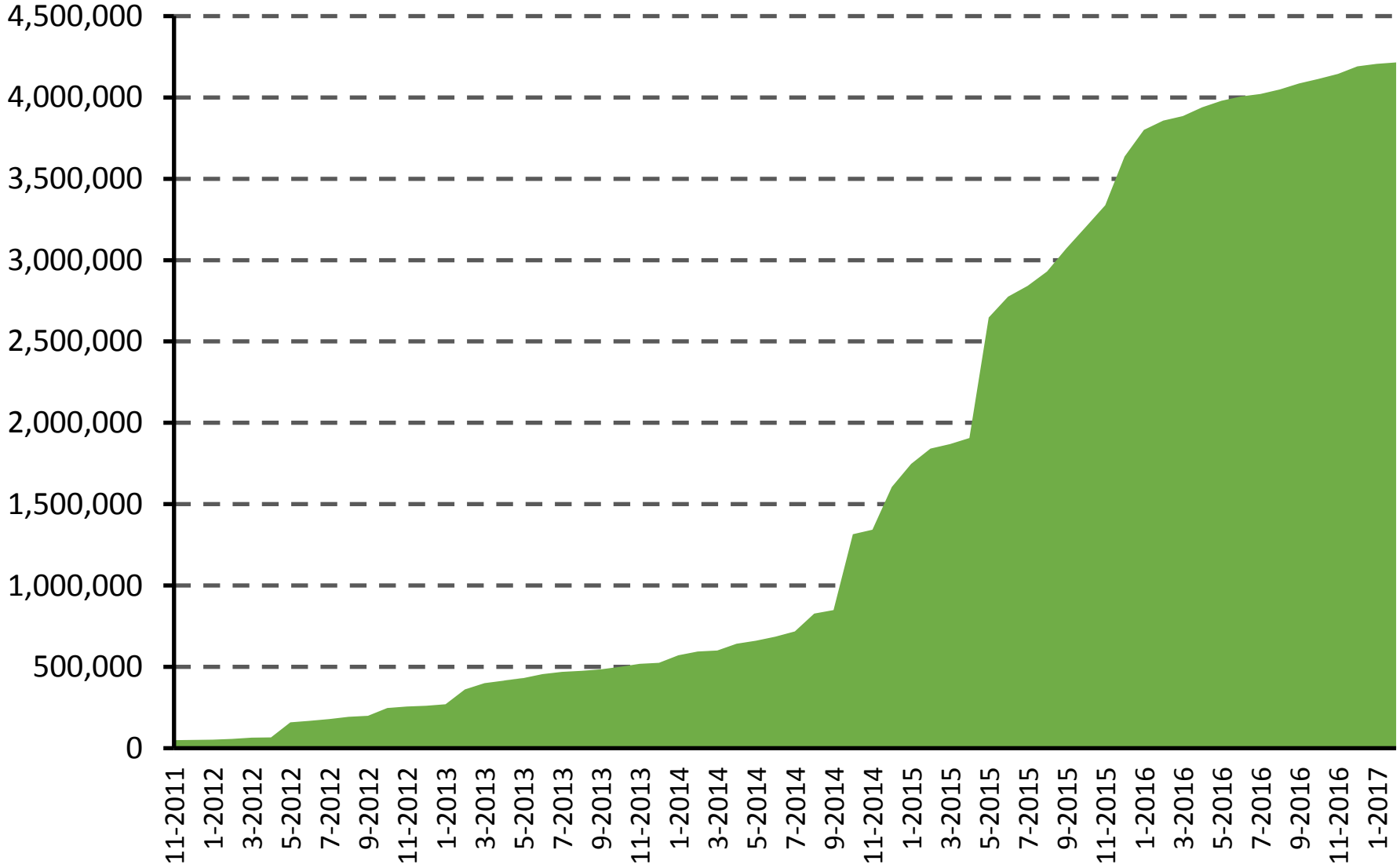
Total Turf Removal Application Size by Month



March 15, 2017

Square Feet

Total Turf Removed



March 15, 2017