



SMART WATER iQ



About Us

Smart Utility Systems (SUS) is a business solutions company focused on delivering optimized digital platform solutions for Customer Engagement, Mobile Workforce, and Business Analytics to the Utility industry.

WHO WE ARE

- Established in 2009, HQ in Southern California, offices in Santa Clara, Singapore, India
- Smart Grid Product of the Year 2015, 2016 SAP Pinnacle Award**
200% annual growth
- Management with **one hundred +years of collective utility experience**
- Energy and Utilities Industry commitment – **SUS only works with Utilities**

SOLUTIONS

Smart Customer Mobile (SCM)



Smart Mobile Workforce (SMW)



Smart iQ Analytics (SiQ)



CLIENTS

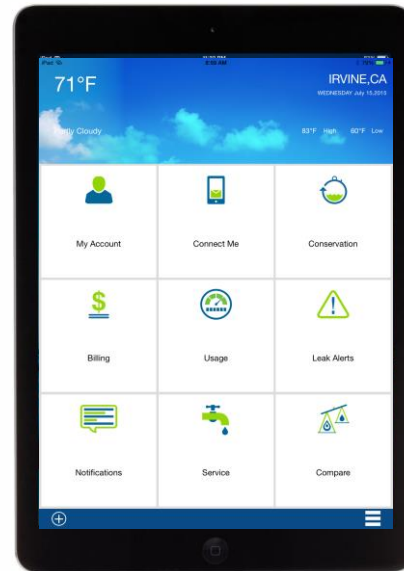
 9.7 Million Customers	 5 Million Customers	 3.4 Million Customers
 2.2 Million Customers	 400,000 Customers	 175,000 Customers
 85,000 Customers	 26,000 Customers	 16,000 Customers

PARTNERS / EXPERIENCES

Unified Modules Across Devices



iOS / Android / Windows Phone / Browser / Multilingual



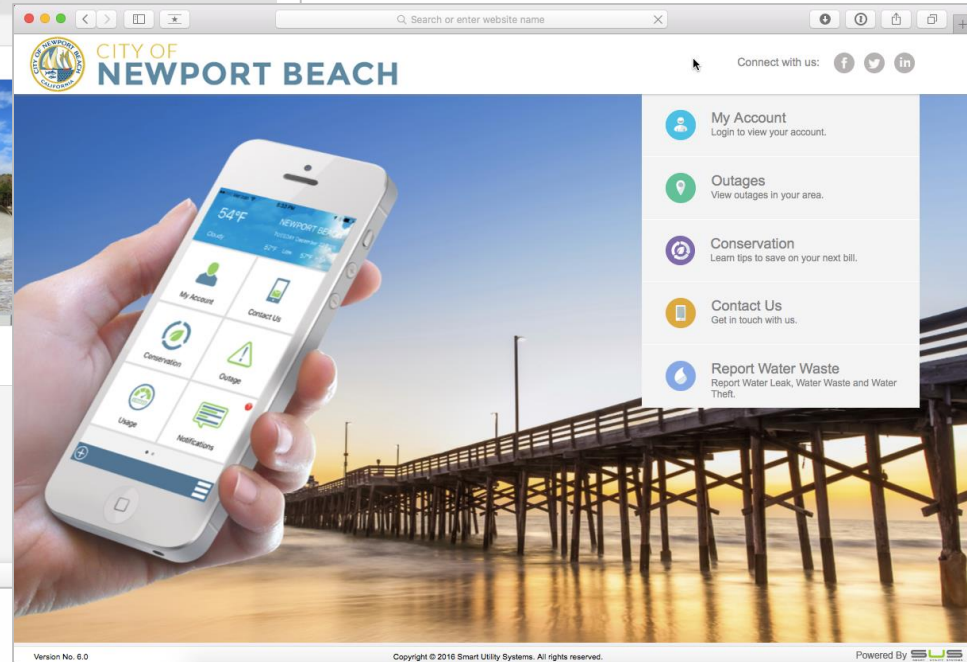
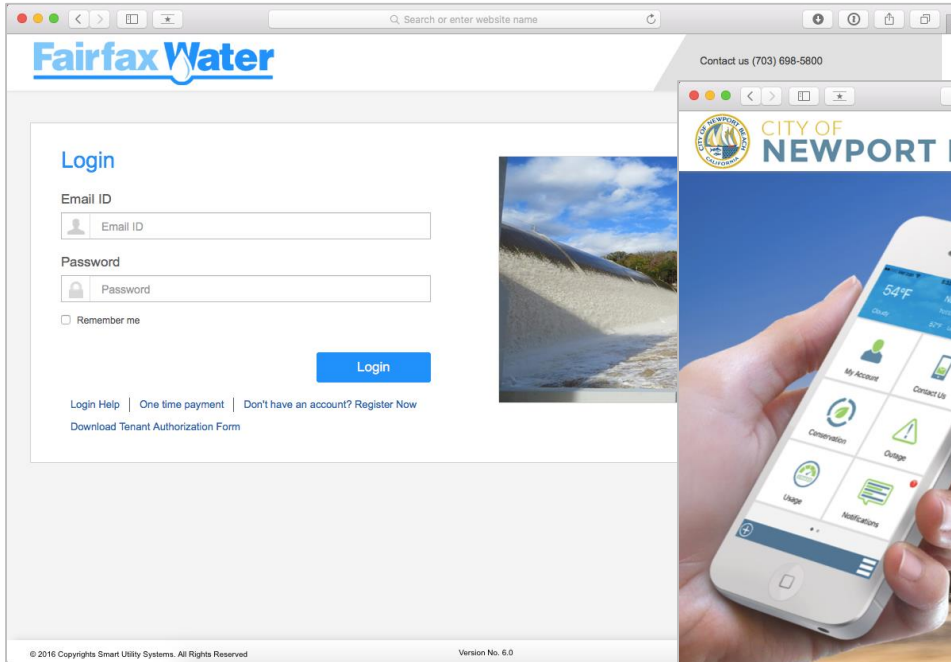
English



Spanish / etc.

Utility Branded Portal

SUS Builds, Deploys and Maintains Portal with Your Branding

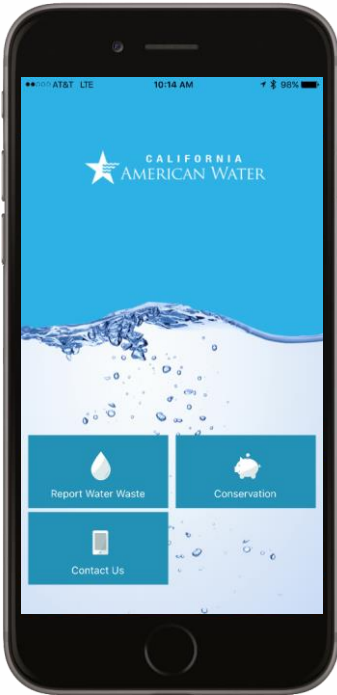


Utility Branded Mobile App

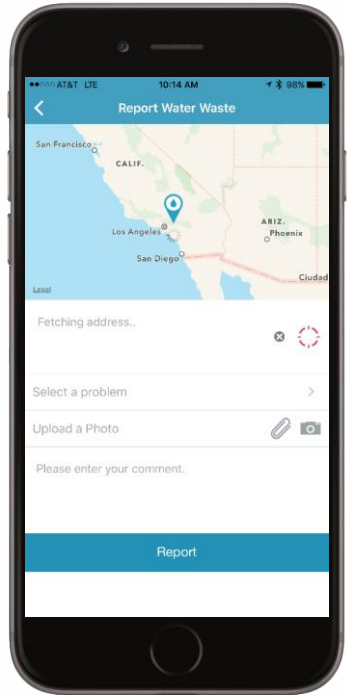
SUS Builds, Deploys and Maintains Mobile Apps with Your Branding



Cal American Water Home Screen



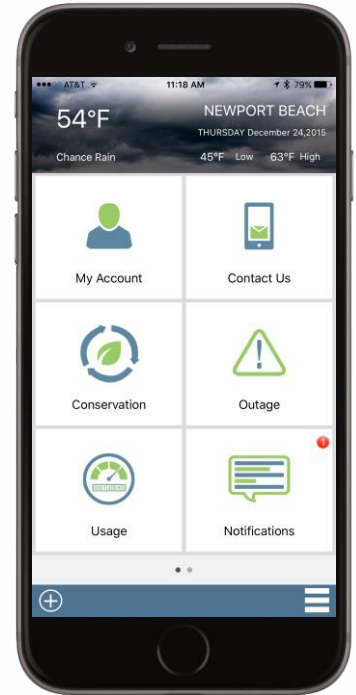
Cal American Water Report Water



City of Newport Beach Home Screen



City of Newport Beach Modules



Ongoing Industry Recognition



April 16, 2016 LA Times

“Glendale has a consistent track record of implementing innovative programs to help our customers save money and conserve,” Steve Zurn, the utility’s general manager, said in the statement. “We are always looking for proven and verifiable technologies to better engage our customers.”





moulton niguel water district

WATER SOFTENER RULES AND REGULATIONS REVISIONS

WATER SOFTENING 101

- Water hardness is a measure of specific minerals in water that can impact the performance of various household and commercial functions
- “Hard Water” is a measurement of mainly Calcium and Magnesium levels in water
- Water Softener units use “ion exchange” technology to remove hardness
- Brine and backwash discharge are byproducts of “regenerating water softeners” that enter sewer

TYPICAL WATER SOFTENERS

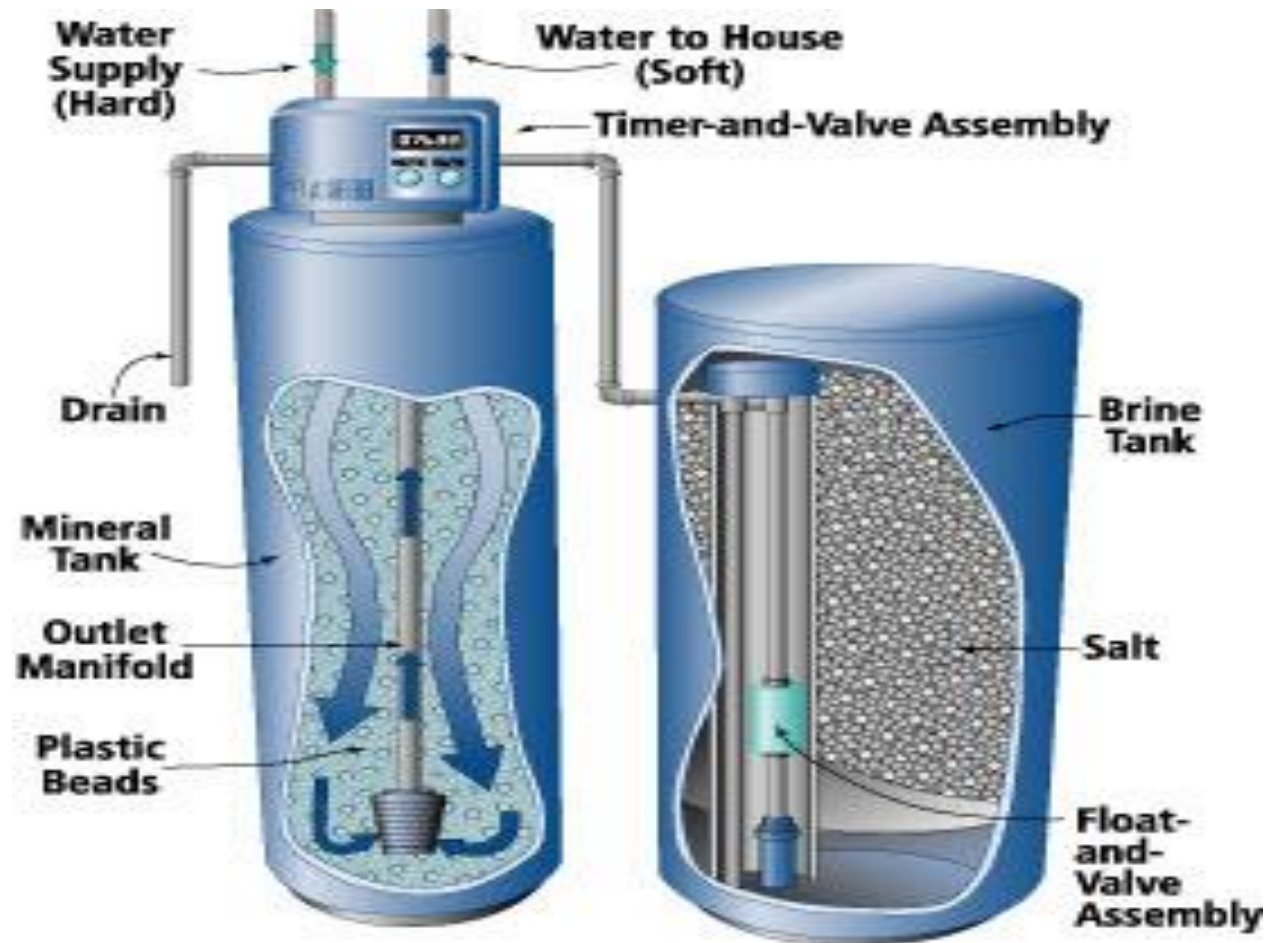
Commercial / Industrial



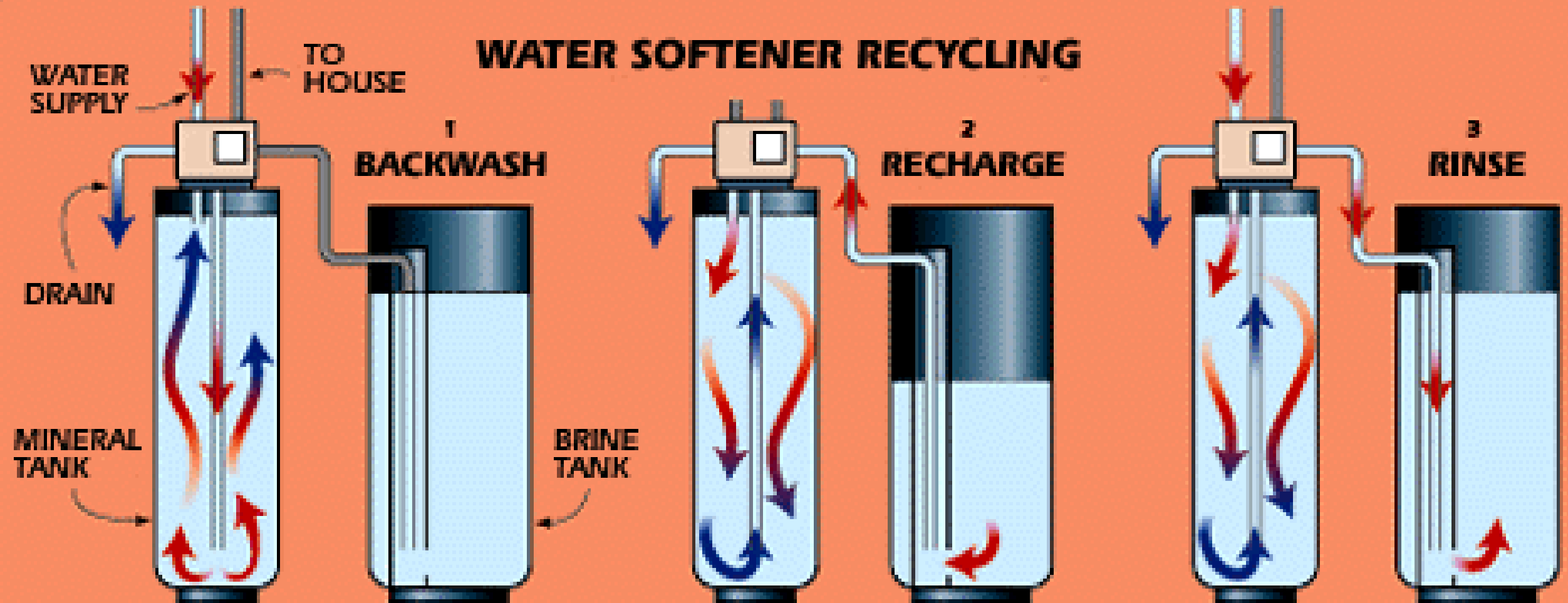
Residential



WATER SOFTENING PROCESS



WATER SOFTENING PROCESS



CODE STATUTES AND DISTRICT RULES & REGULATIONS

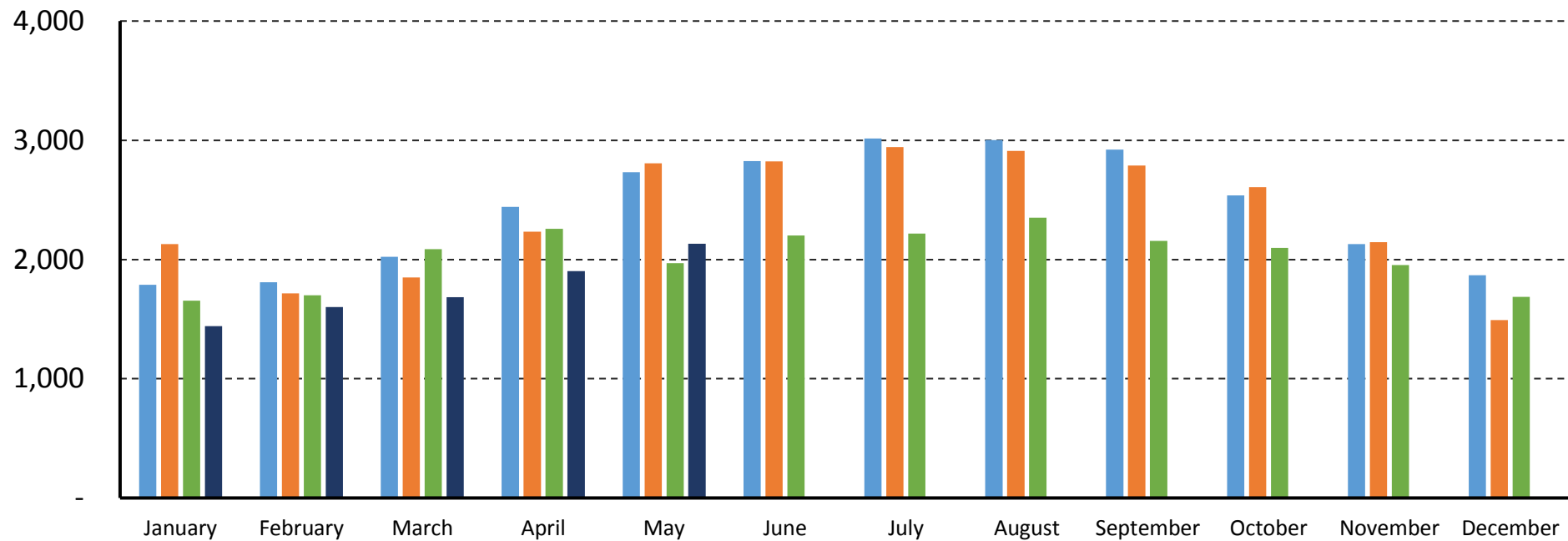
- District R&R's currently prohibit use of self-regenerating water softeners
- Two Statutes, Health & Safety Code and California Water Code, require specific conditions be met to allow for restricting residential water softener use
- Codes do not provide policy on restriction of non-residential water softener use
- Health & Safety Code: Local agency must have specific findings through independent studies showing restriction is “necessary means” of Waste Discharge or Permit compliance
- Water Code: Specific findings by Regional Board on impacts to water quality objectives be substantiated to “control” salinity input from residential water softeners
- No findings have been made by Region 9 of San Diego Regional Water Quality Control Board or by MNWD / SOCWA
- Relief of District's prohibition would not have noticeable impact on wastewater salinity levels
- Revisions will reference compliance with Health & Safety Code Section 116775, et seq.

STAFF RECOMMENDATION

- Sections 5.B.2, 5.J.1.k, and 12 of District's Rules and Regulations be modified (per Exhibit A) and adopted to comply with Health and Safety Code Section 116775, et seq

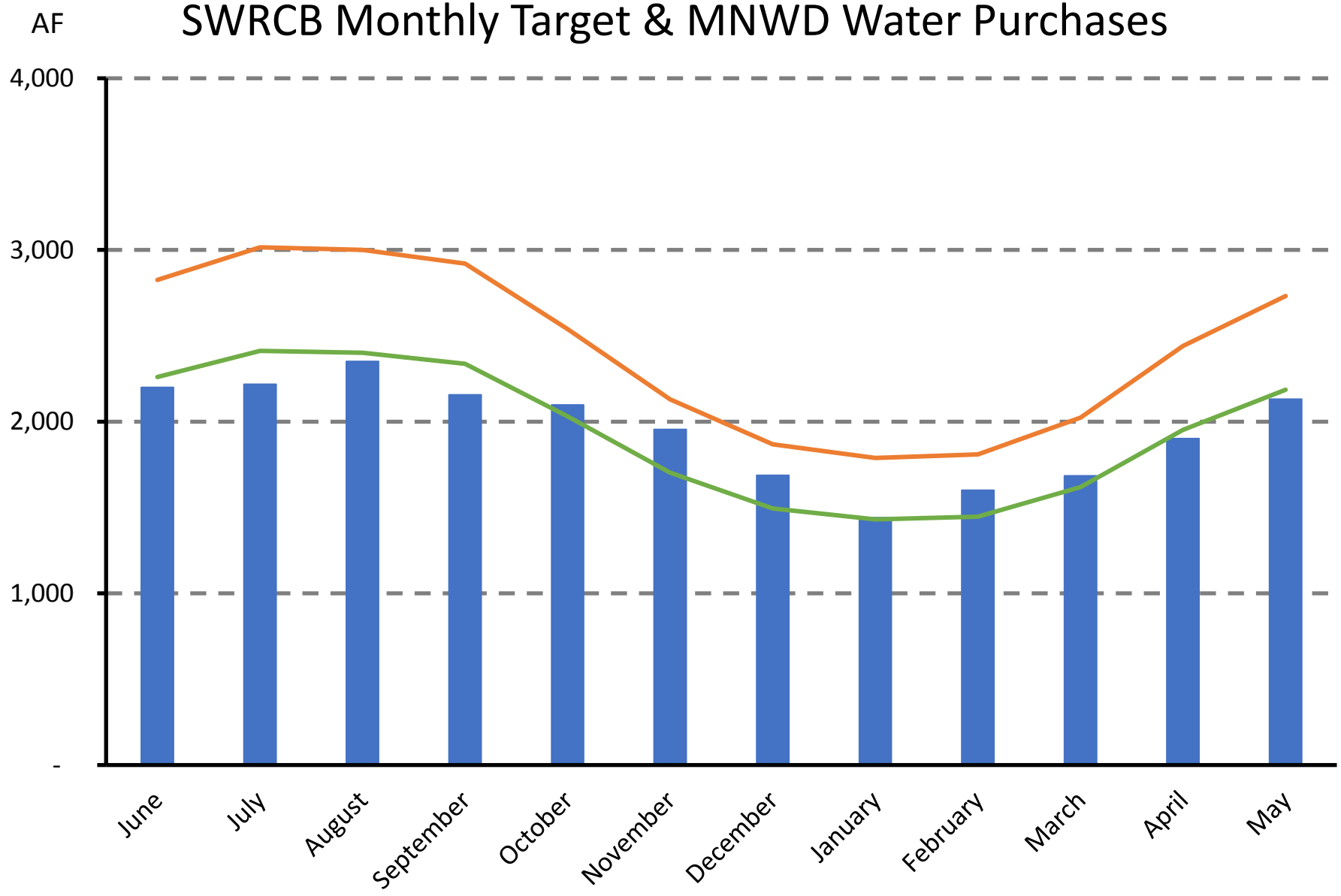
Questions?

AF Historical Monthly MNWD Water Purchases & Evapotranspiration



Year	ET (Inches)												
2013	2.54	2.88	4.08	4.79	5.99	6.07	5.81	6.53	5.26	3.92	2.52	2.49	
2014	2.82	2.64	4.09	5.54	6.39	6.45	6.54	6.23	5.21	3.94	3.16	1.91	
2015	2.52	3.02	4.96	5.31	4.48	5.75	5.69	6.27	5	3.88	3.24	2.35	
2016	1.87	3.82	3.98	5.16	4.63								

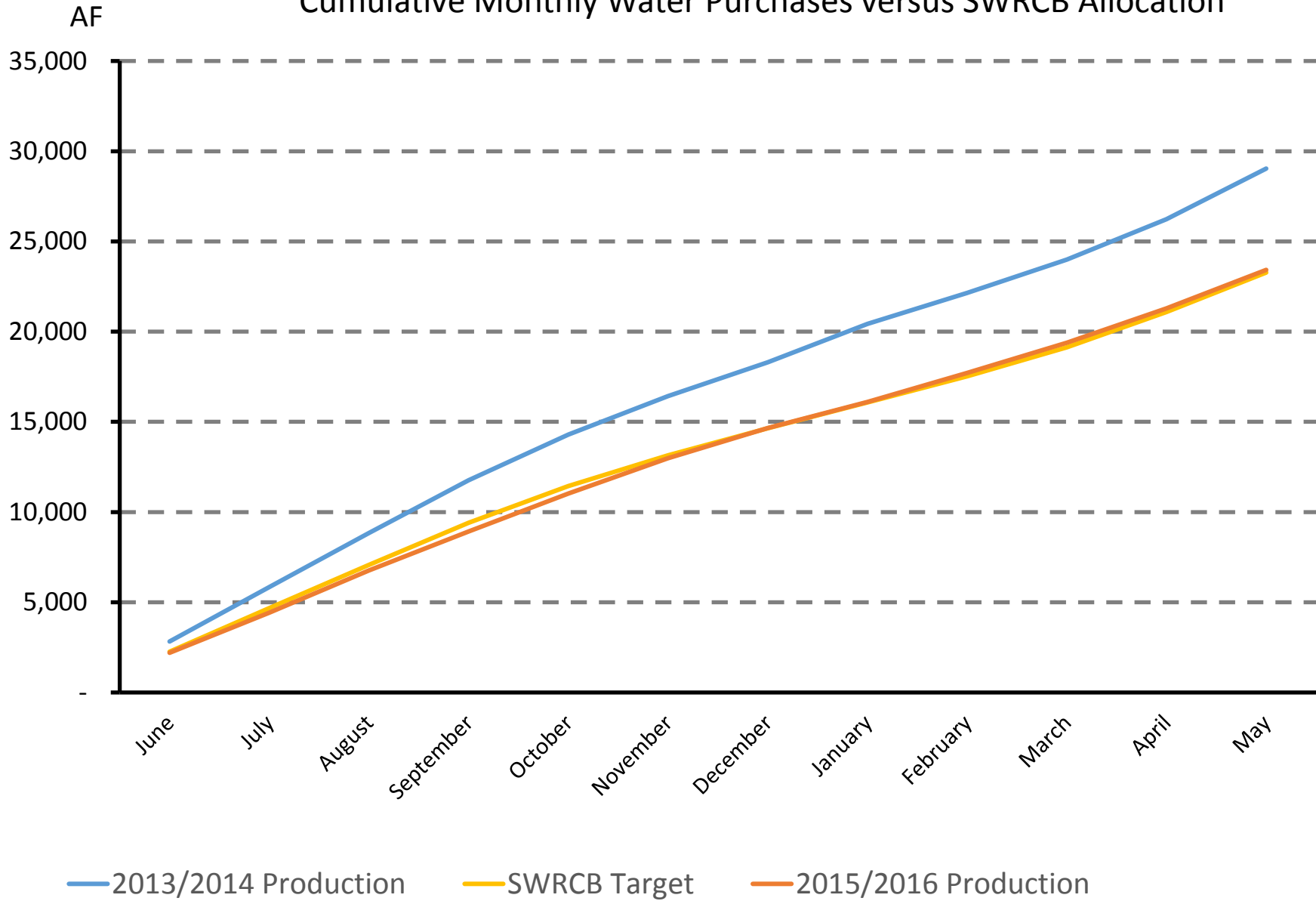
SWRCB Monthly Target & MNWD Water Purchases



■ 2015/2016 Production — 2013 Production — SWRCB Target

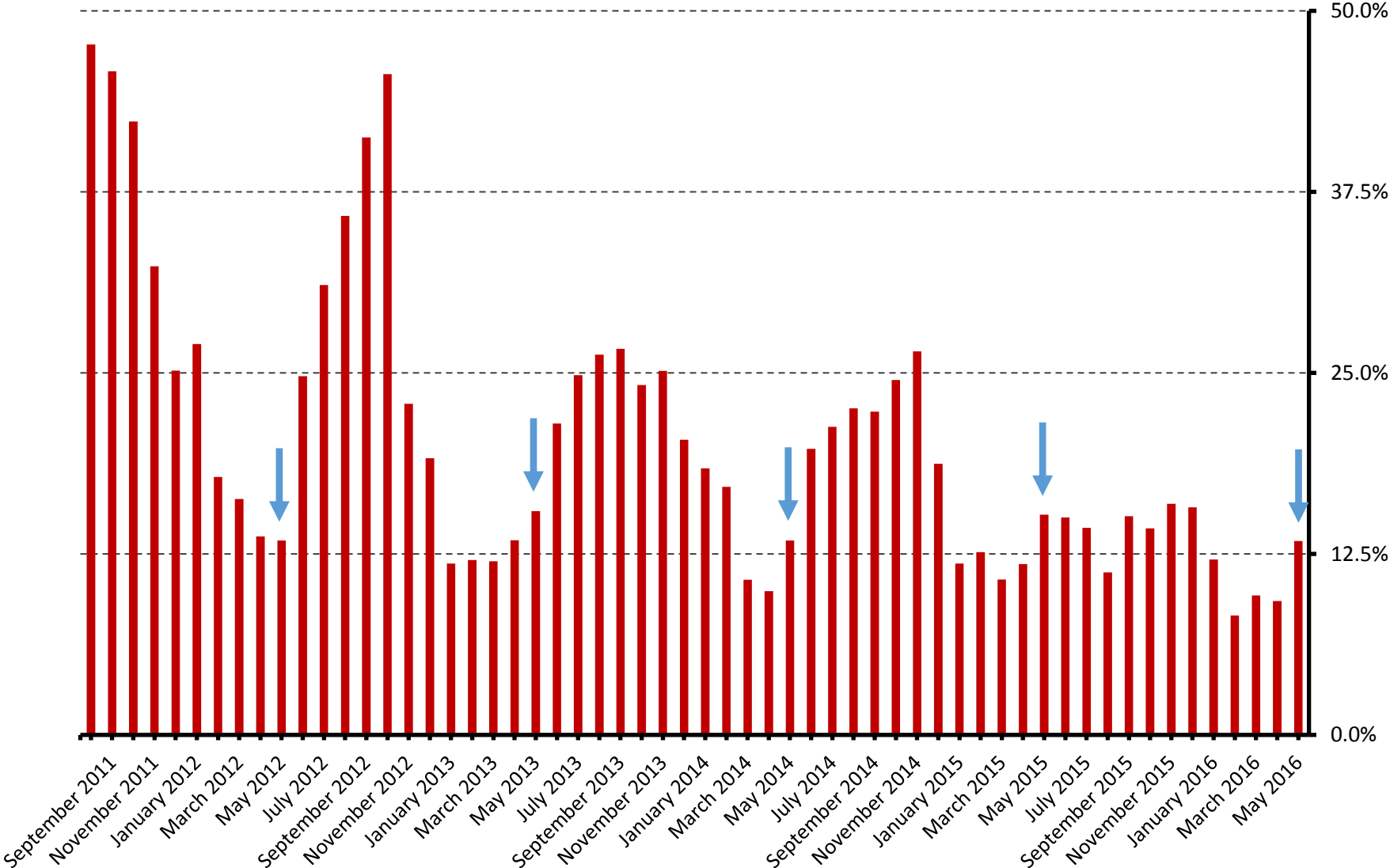
June 13, 2016

Cumulative Monthly Water Purchases versus SWRCB Allocation



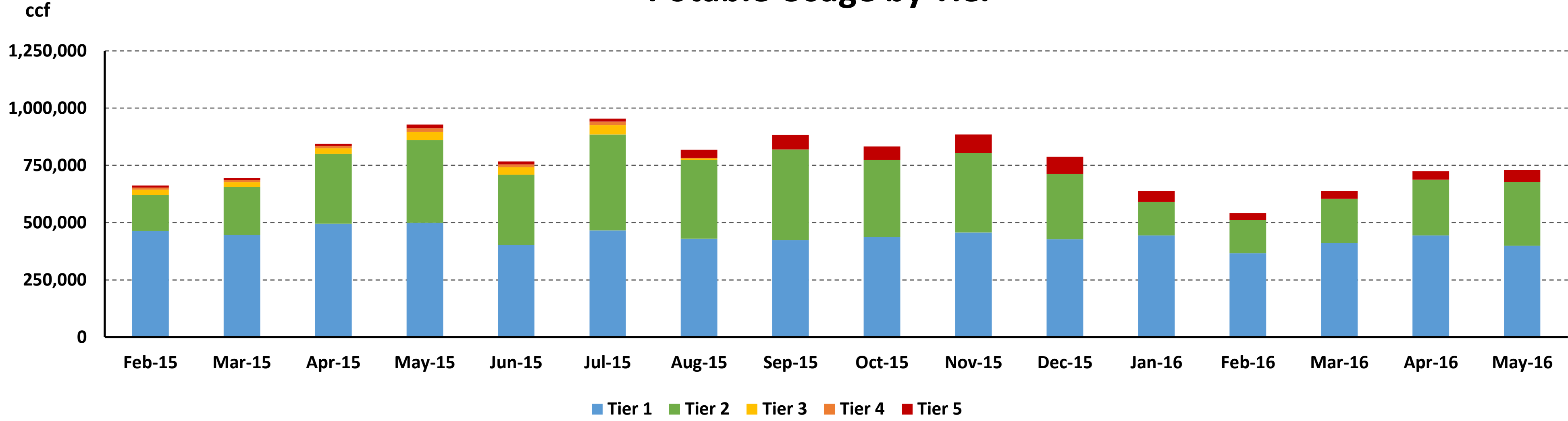
June 13, 2016

Single Family Residential Accounts Above Tier 2



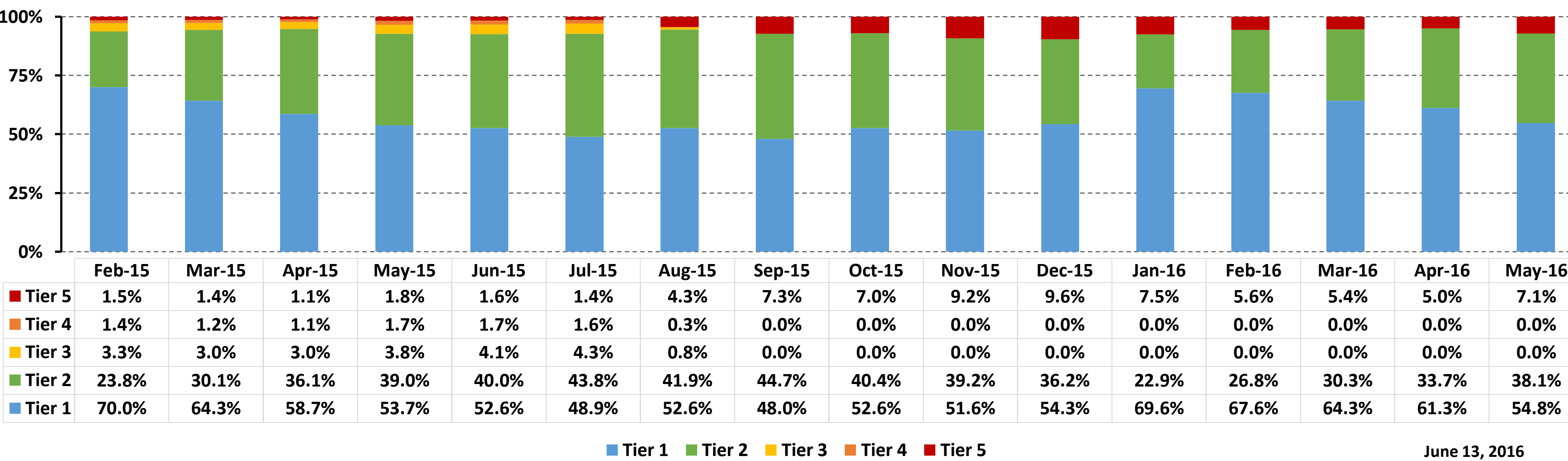
June 13, 2016

Potable Usage by Tier

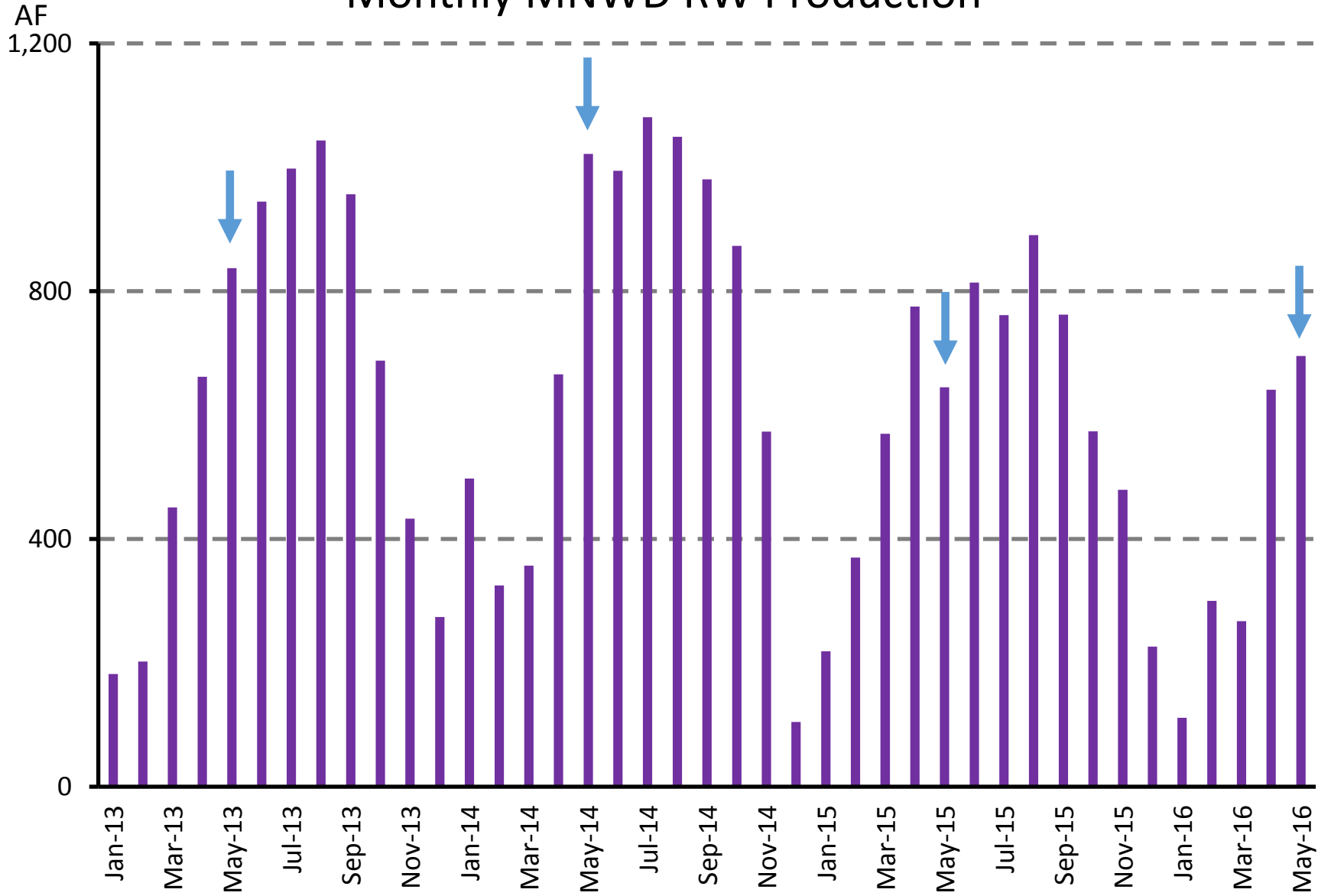


AF in Tier 3, 4, 5	Feb-15	Mar-15	Apr-15	May-15	Jun-15	Jul-15	Aug-15	Sep-15	Oct-15	Nov-15	Dec-15	Jan-16	Feb-16	Mar-16	Apr-16	May-16
	94	89	101	154	131	159	102	148	134	187	173	110	70	78	83	119

Percent Potable Usage by Tier



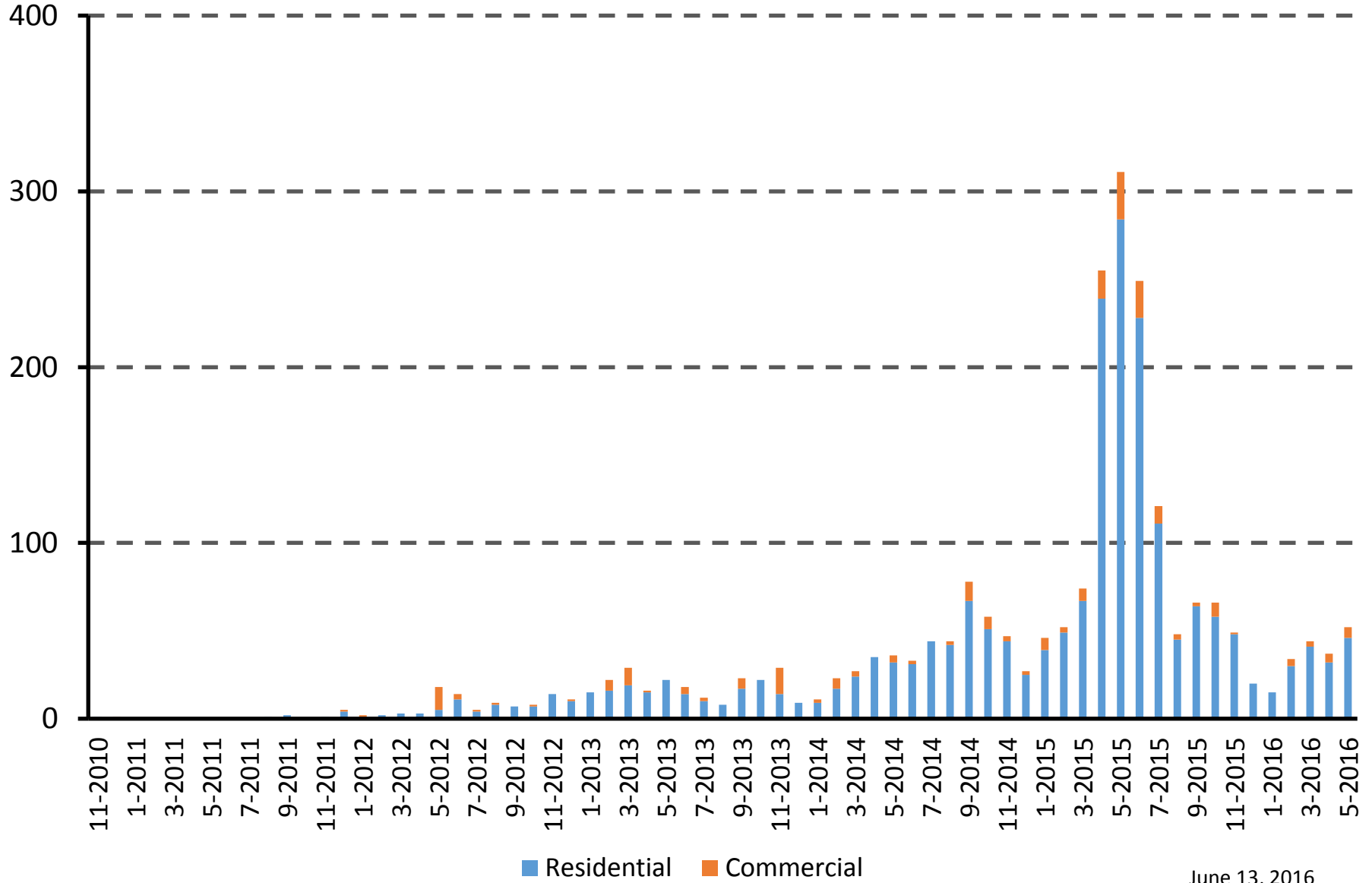
Monthly MNWD RW Production



June 13, 2016

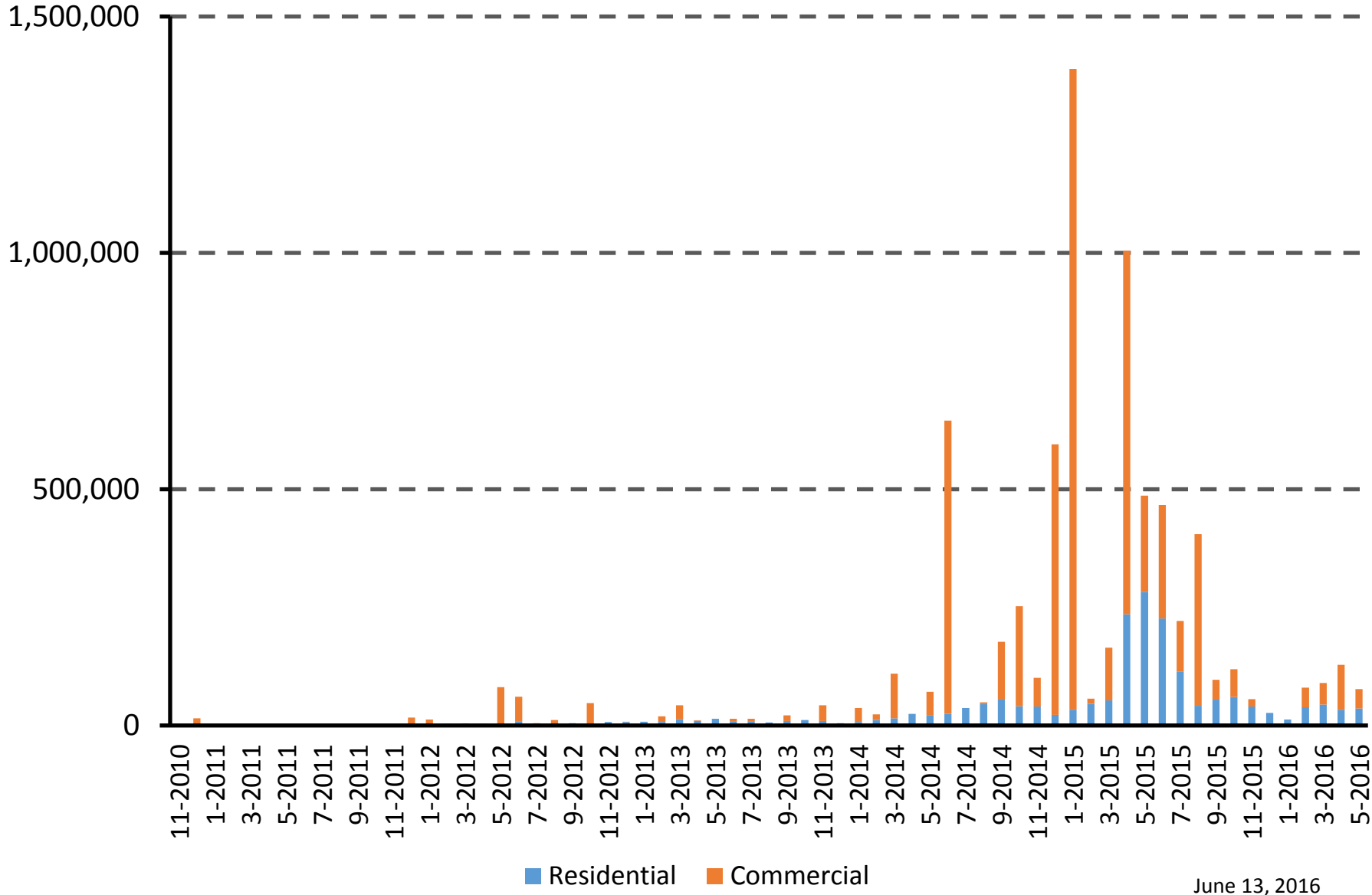
Total Turf Removal Applications by Month

Applications



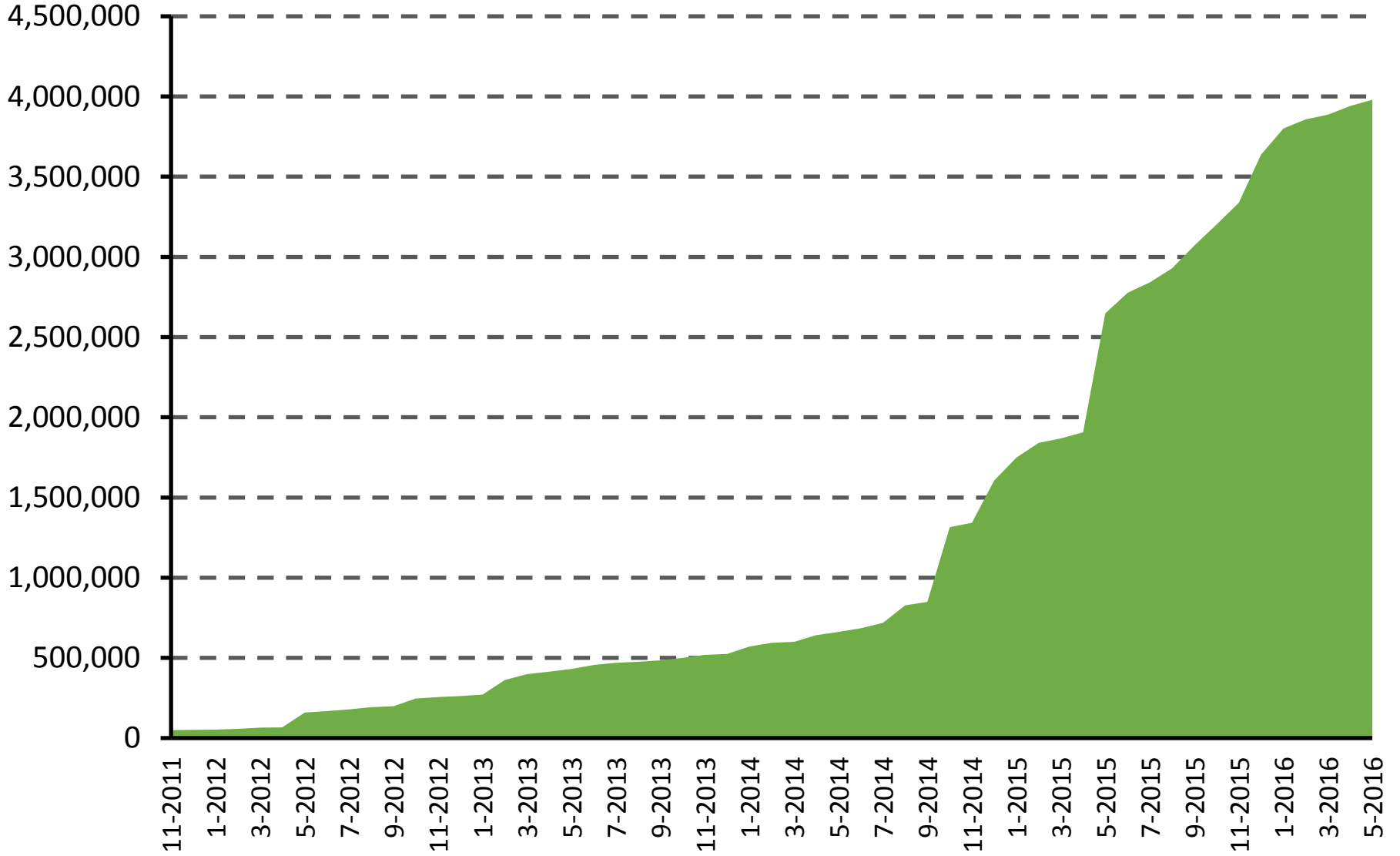
June 13, 2016

Square Feet Total Turf Removal Application Size by Month



Square Feet

Total Turf Removed



June 13, 2016