

Wastewater Influent Trends

Engineering and Operations Board of Directors Meeting

October 12, 2015



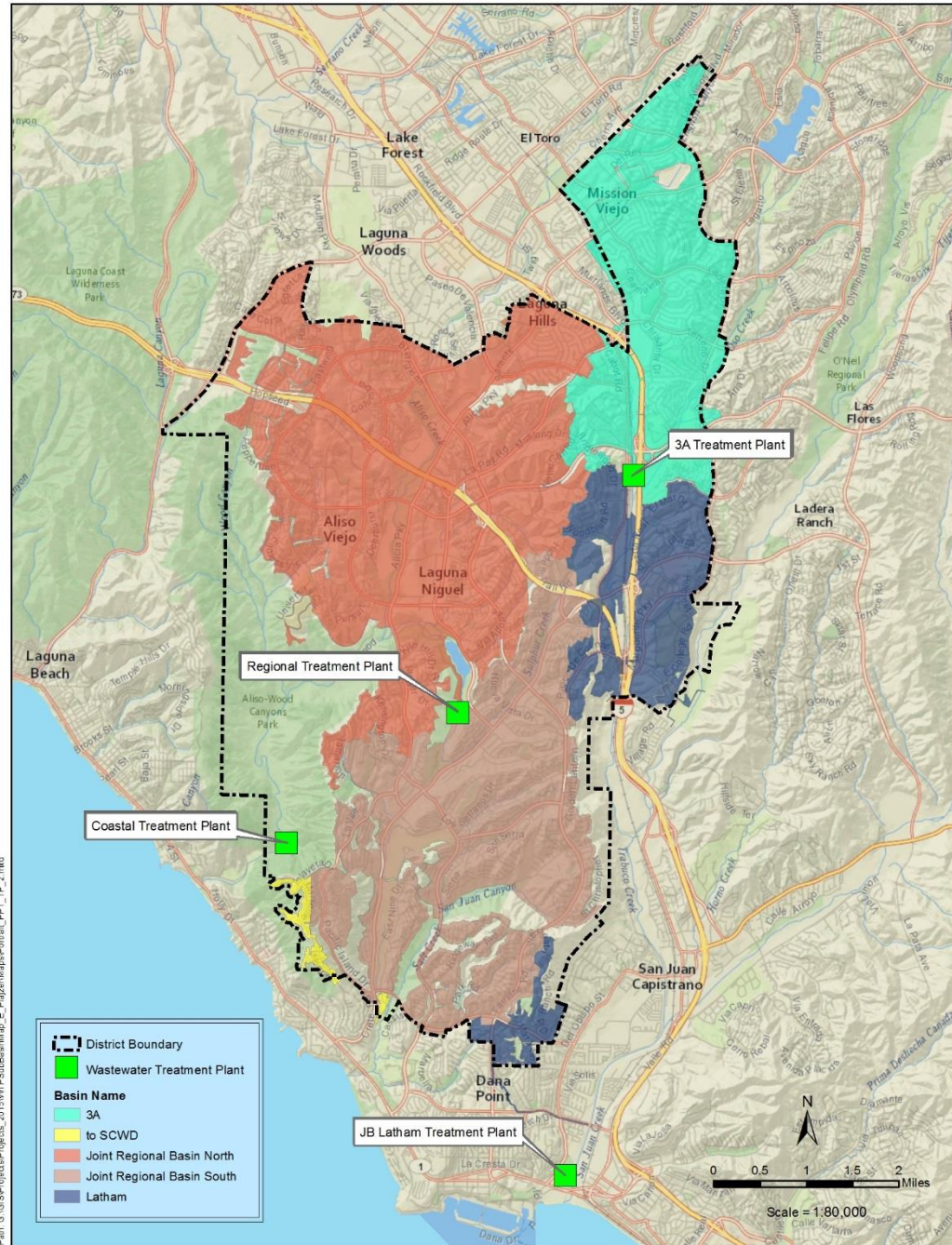
Moulton Niguel Water
Leading the Way in Service

Wastewater Treatment

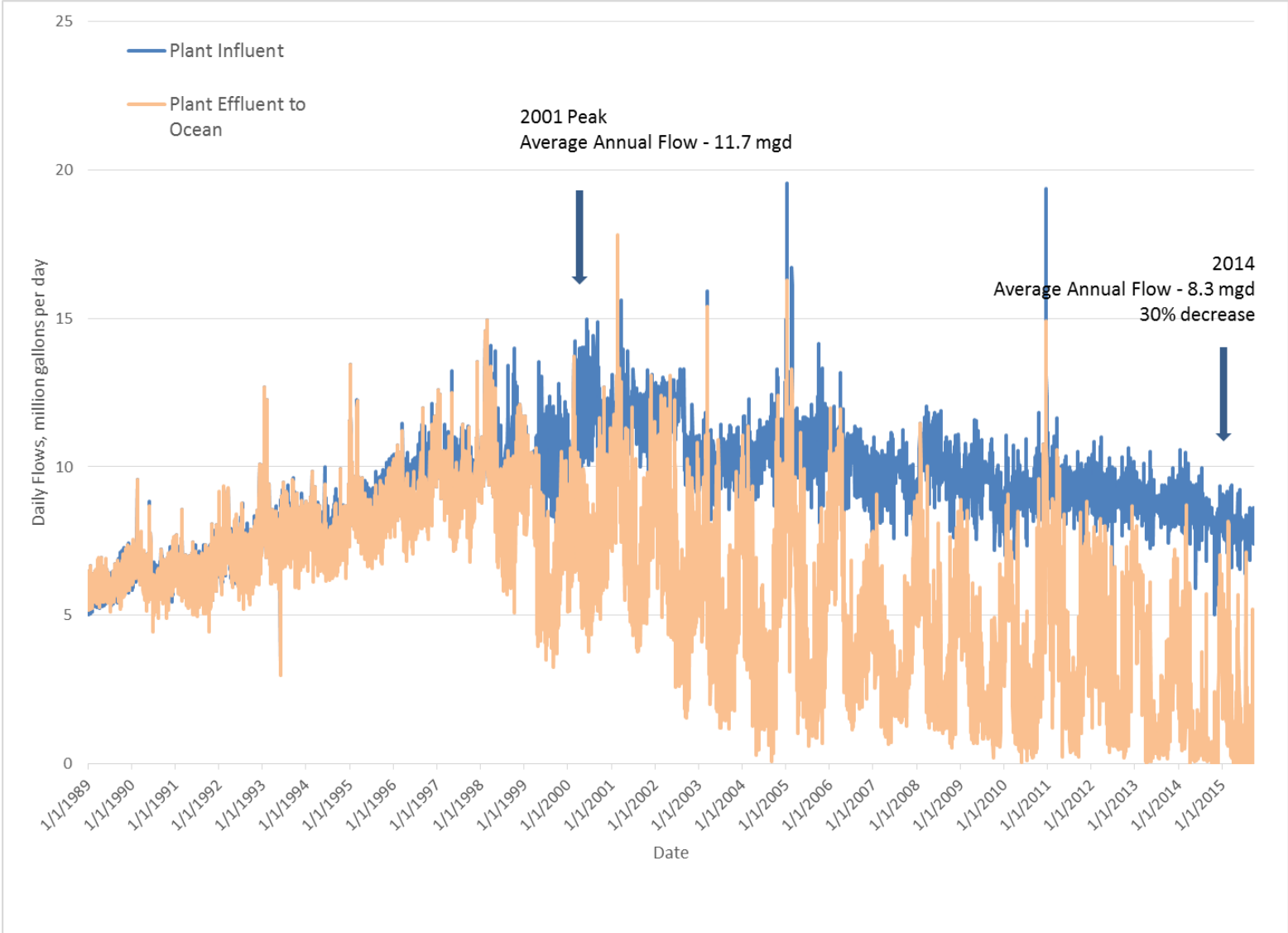
Facility	Wastewater Treatment Capacity		Recycled Water Production	
	Total (mgd)	MNWD Share	Total (mgd)	MNWD Share
Plant 3A	6	71.88%	2.4	100%
Joint Regional	12	100%	11.4(1)	100%
JB Latham	13	23.08%	0	0%
Coastal	6.7	29.25%	4.2	0%

(1) Total of the 2 AWT's at the site. AWT2 only is 9.36 mgd.

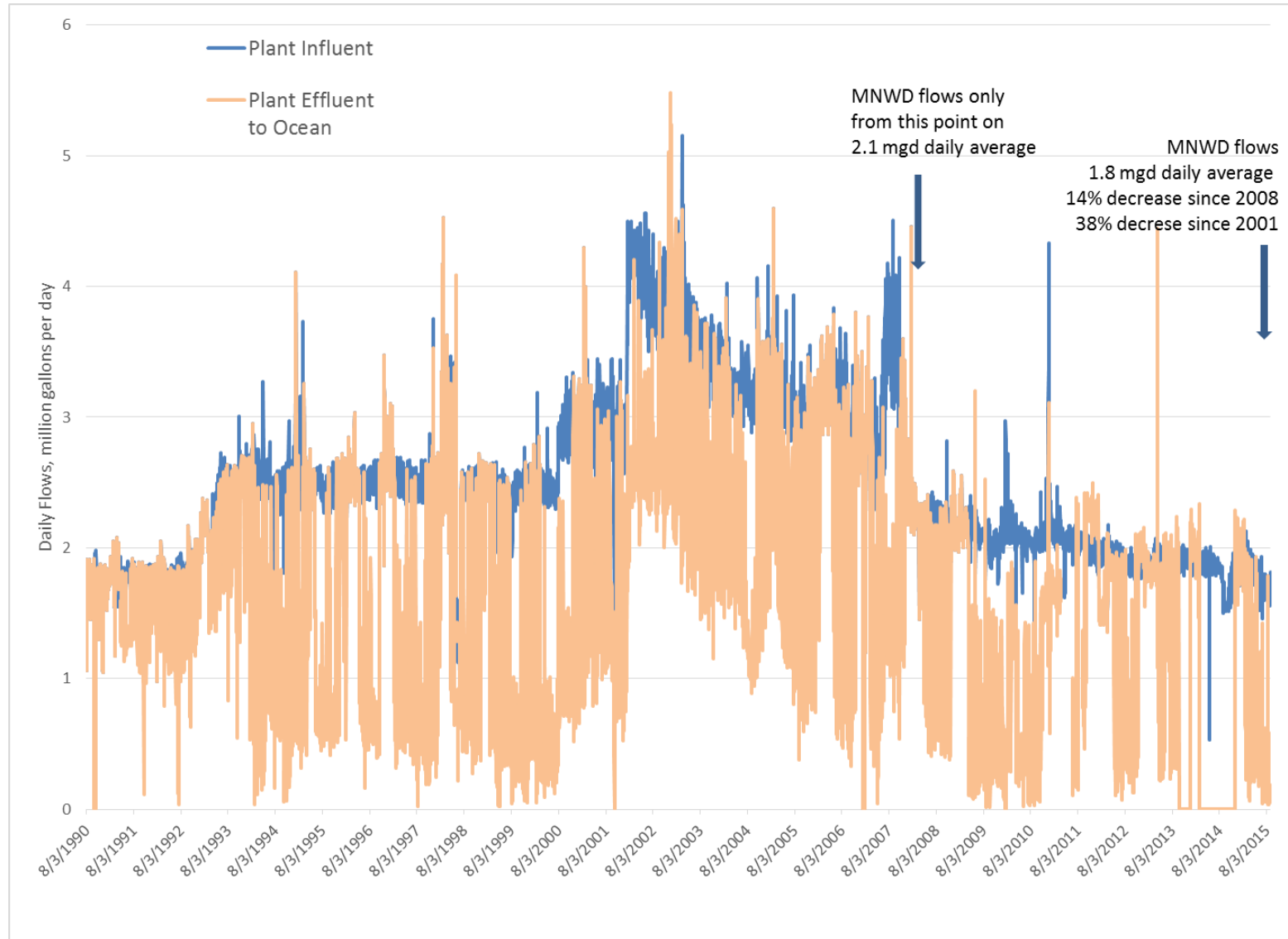
Locations



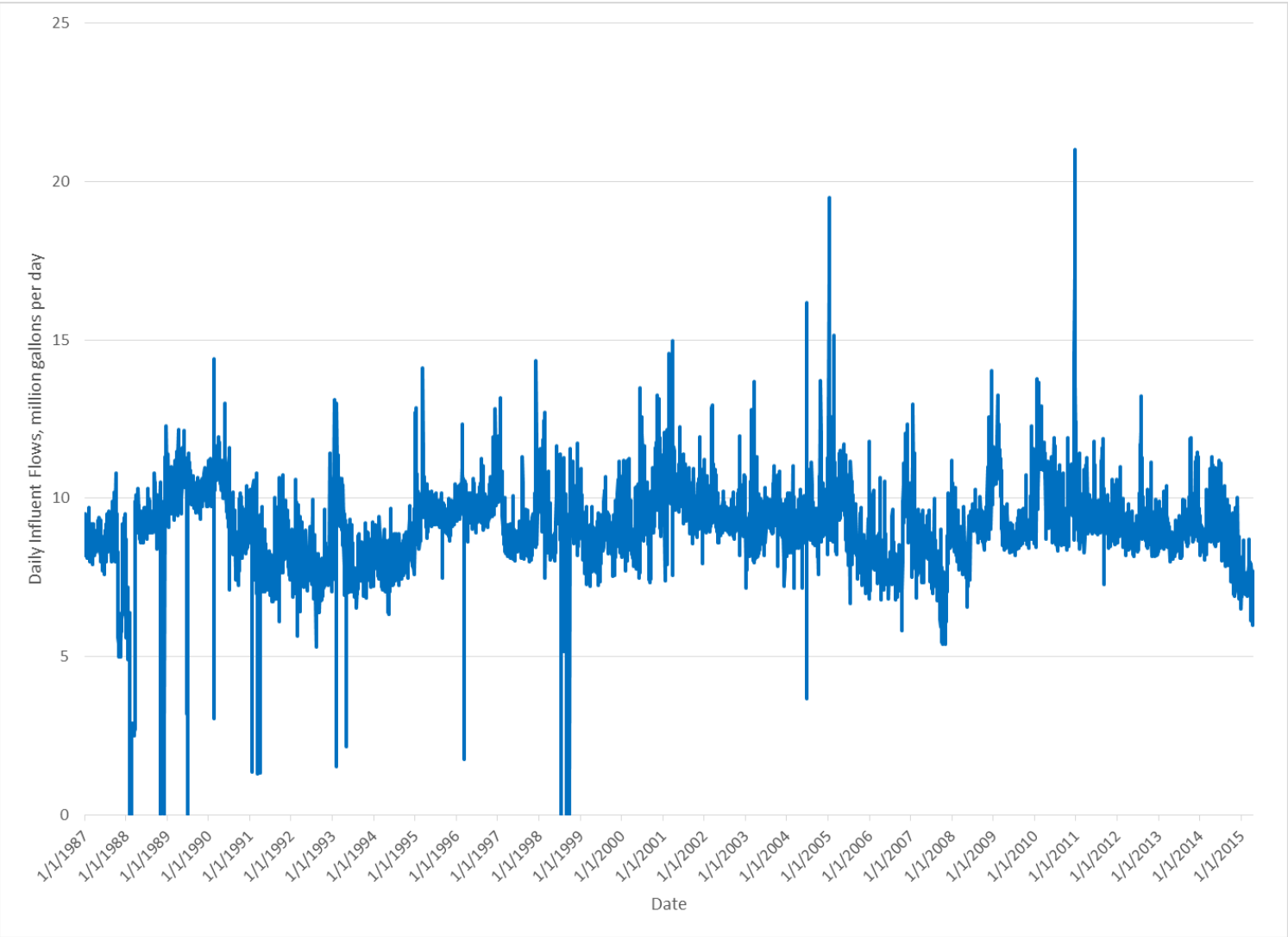
Joint Regional WWTP Influent & Effluent Trend



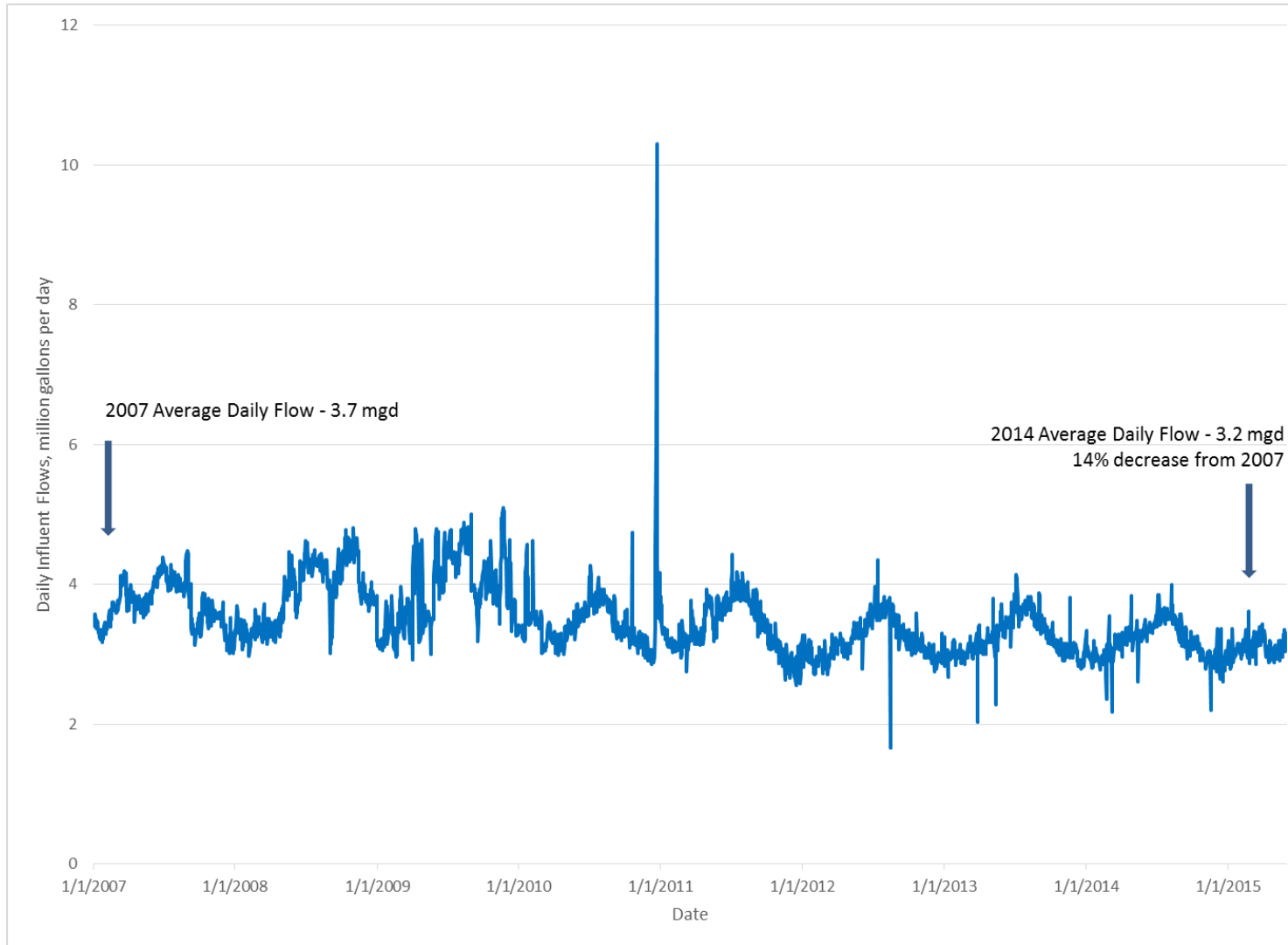
Plant 3A WWTP Influent & Effluent Trend



JB Latham WWTP Influent Trend



Coastal WWTP Influent Trend

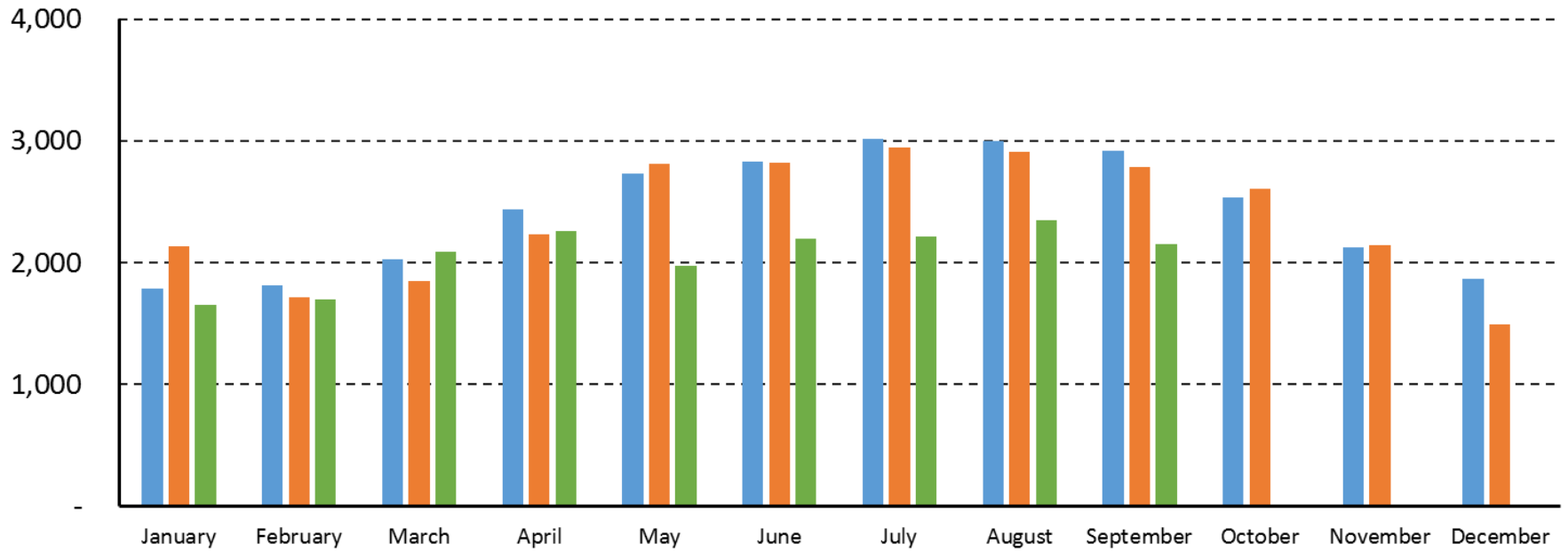


Conclusion

- Significant decrease in wastewater influent at Joint Regional and Plant 3A WWTPs
- JB Latham and Coastal WWTP more seasonal trends due to coastal commercial influence
- Recycled Water Master Plan tasked with assessing lower limits of wastewater influent

AF

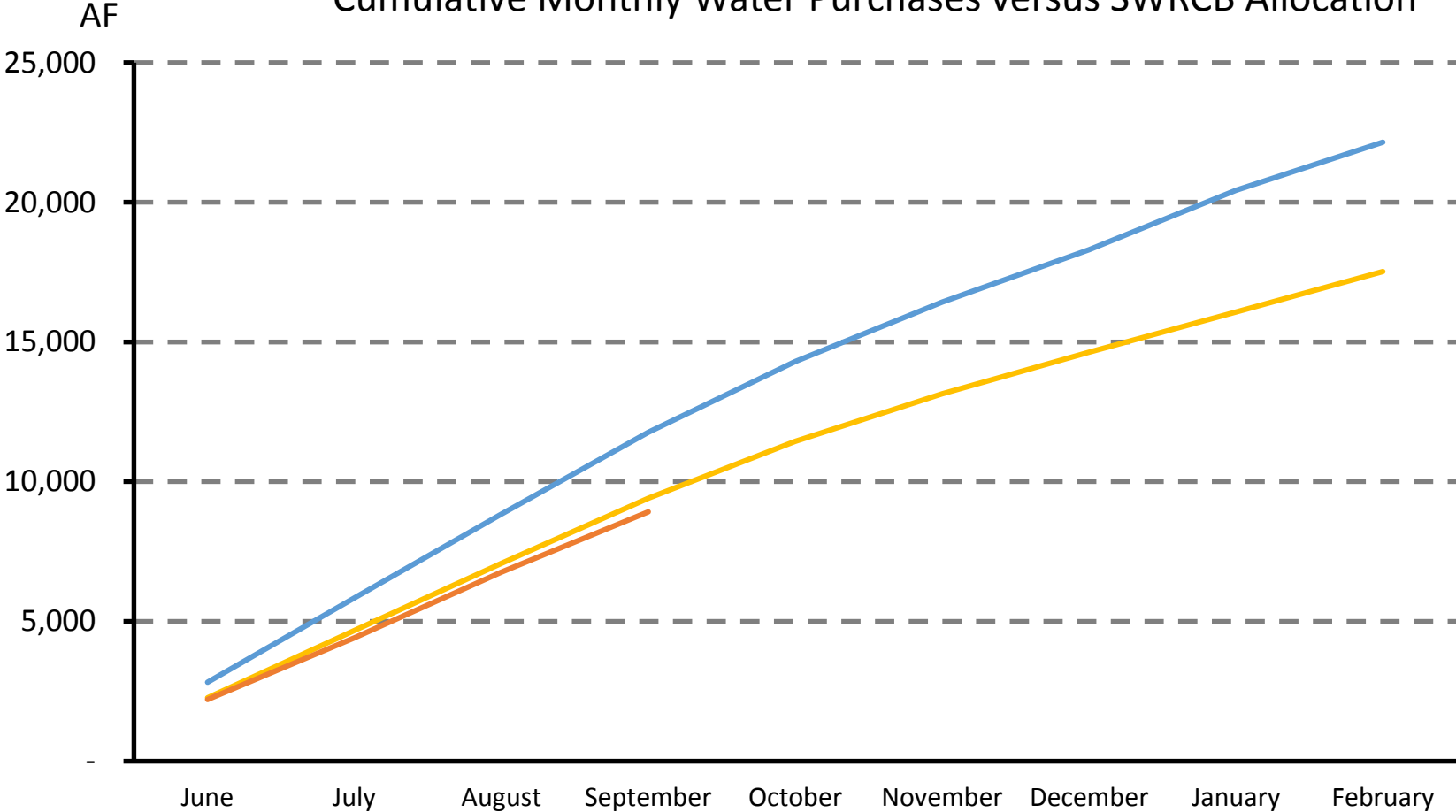
Historical Monthly MNWD Water Purchases & Evapotranspiration



Year	ET (Inches)												
2013	2.54	2.88	4.08	4.79	5.99	6.07	5.81	6.53	5.26	3.92	2.52	2.49	
2014	2.82	2.64	4.09	5.54	6.39	6.45	6.54	6.23	5.21	3.94	3.16	1.91	
2015	2.52	3.02	4.96	5.31	4.48	5.75	5.69	6.27	5				

October 12, 2015

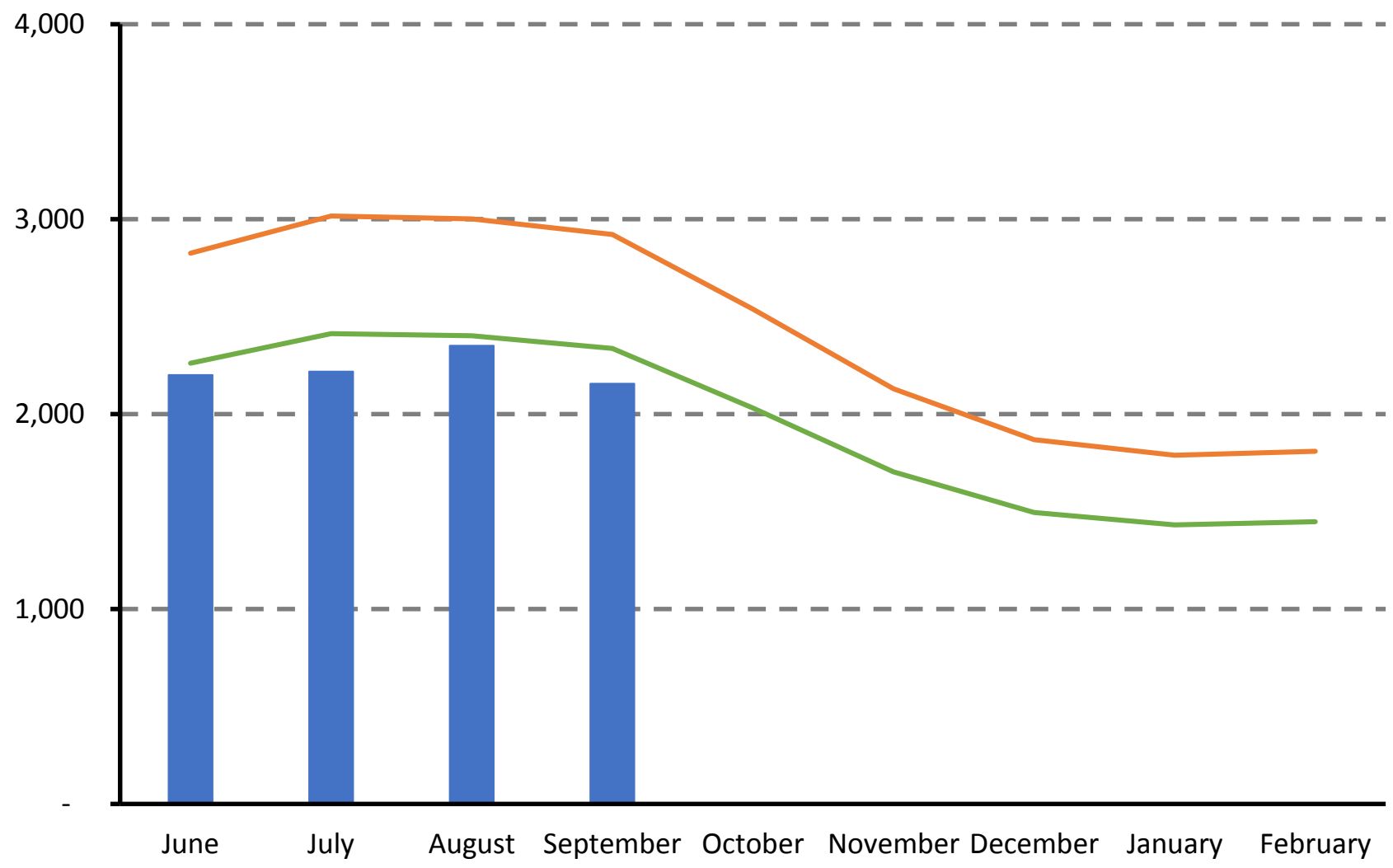
Cumulative Monthly Water Purchases versus SWRCB Allocation



— 2013/2014 Production — SWRCB Target — 2015/2016 Production

AF

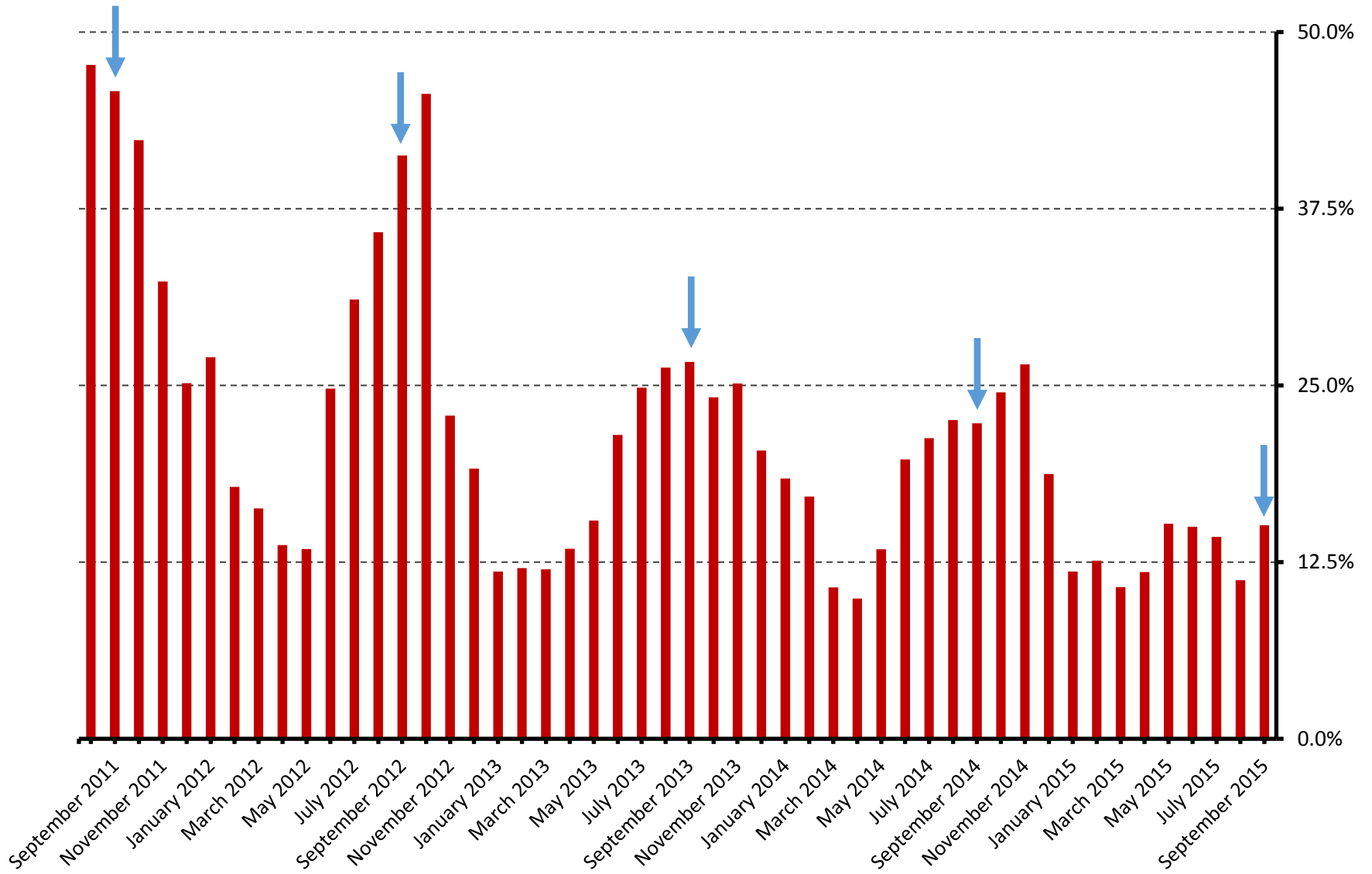
SWRCB Monthly Target & MNWD Water Purchases



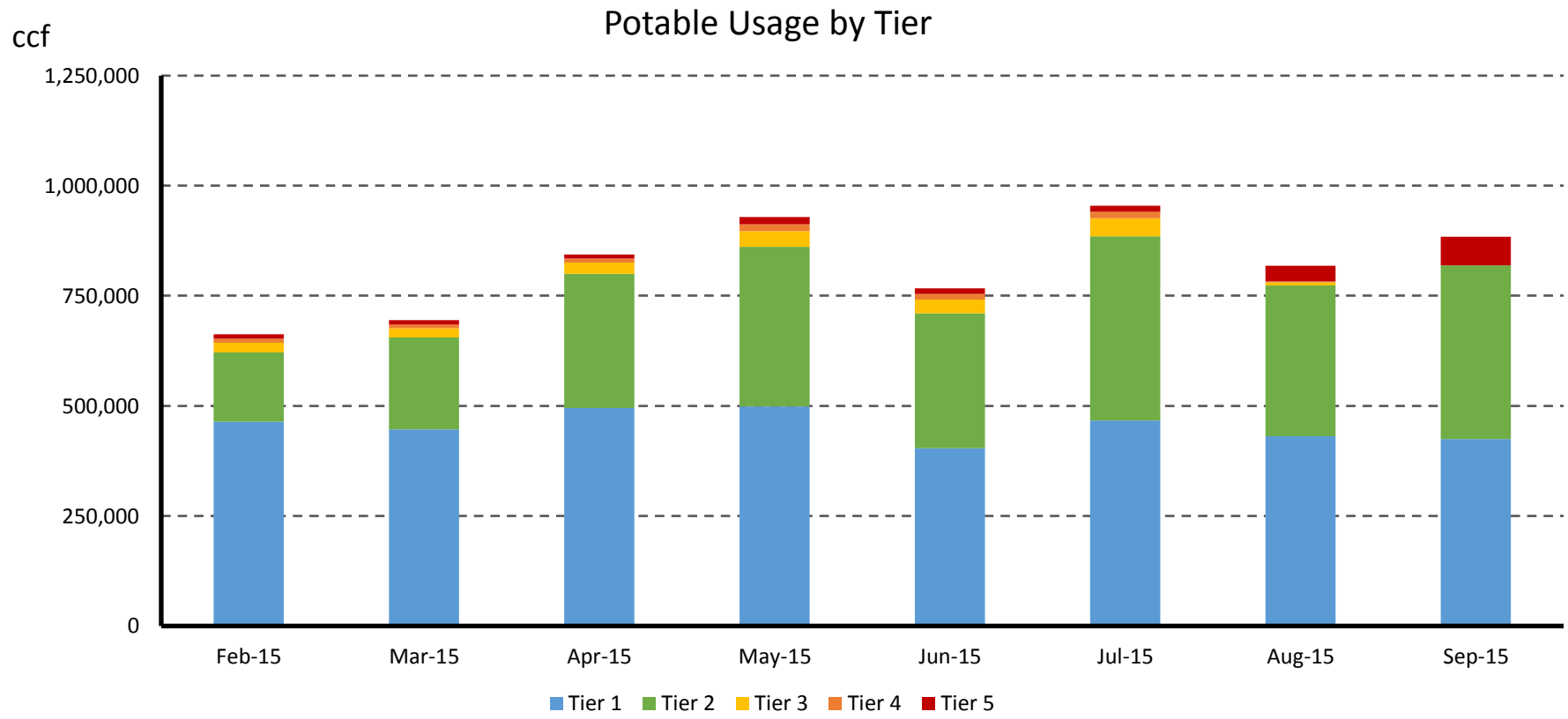
■ 2015/2016 Production — 2013 Production — SWRCB Target

October 12, 2015

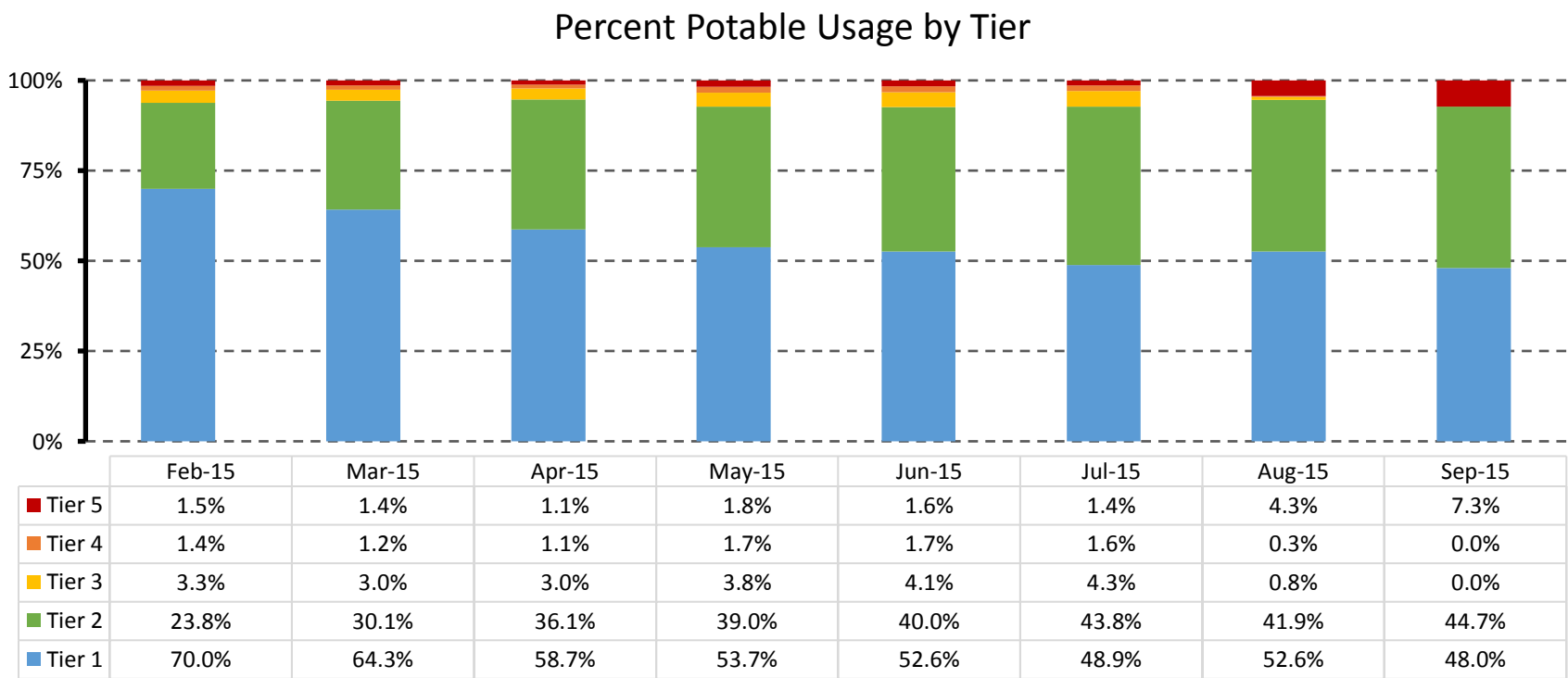
Single Family Residential Accounts Above Tier 2



October 12, 2015

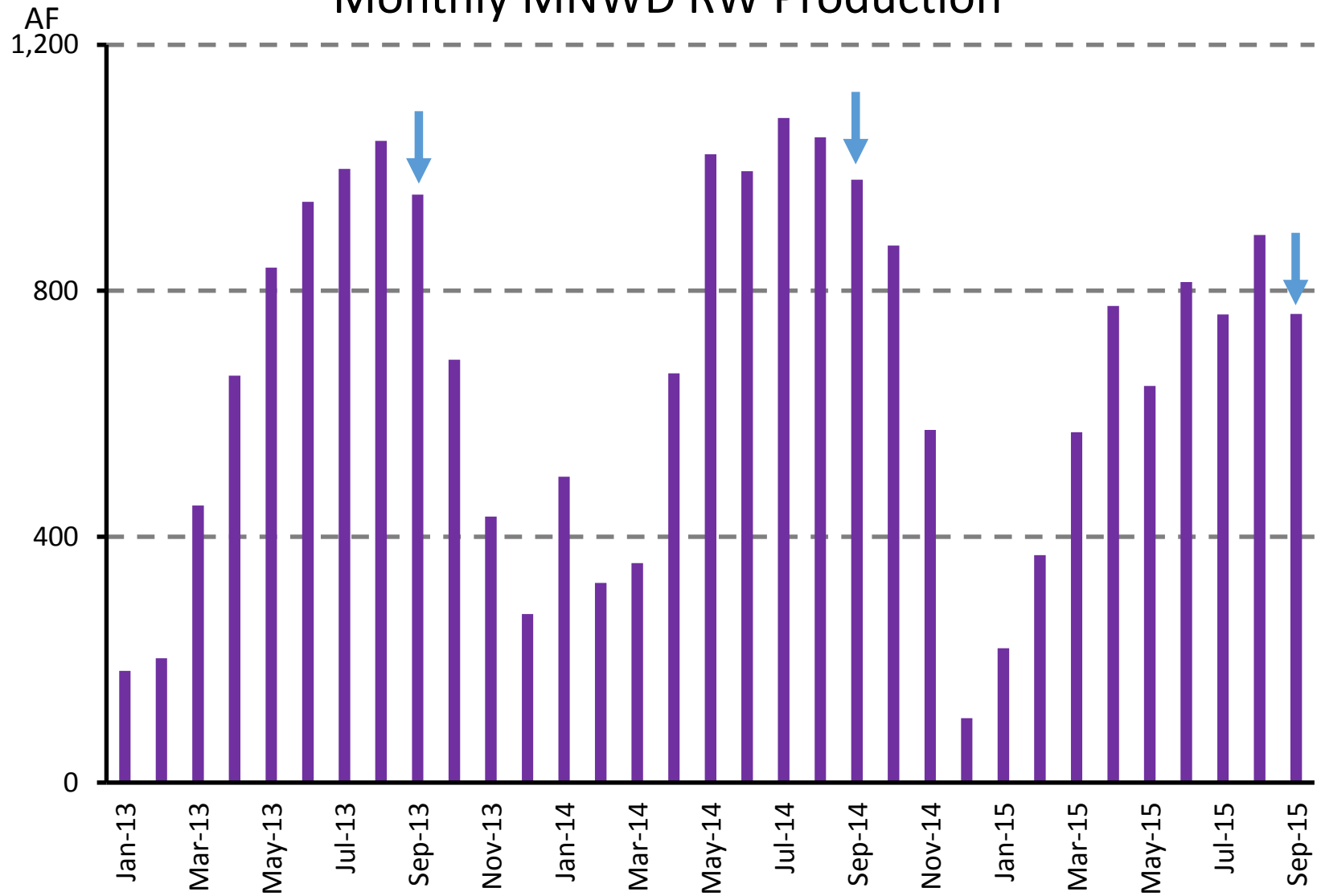


AF in Tier 3, 4, 5	Feb-15	Mar-15	Apr-15	May-15	Jun-15	Jul-15	Aug-15	Sep-15
	94	89	101	154	131	159	102	148



October 12, 2015

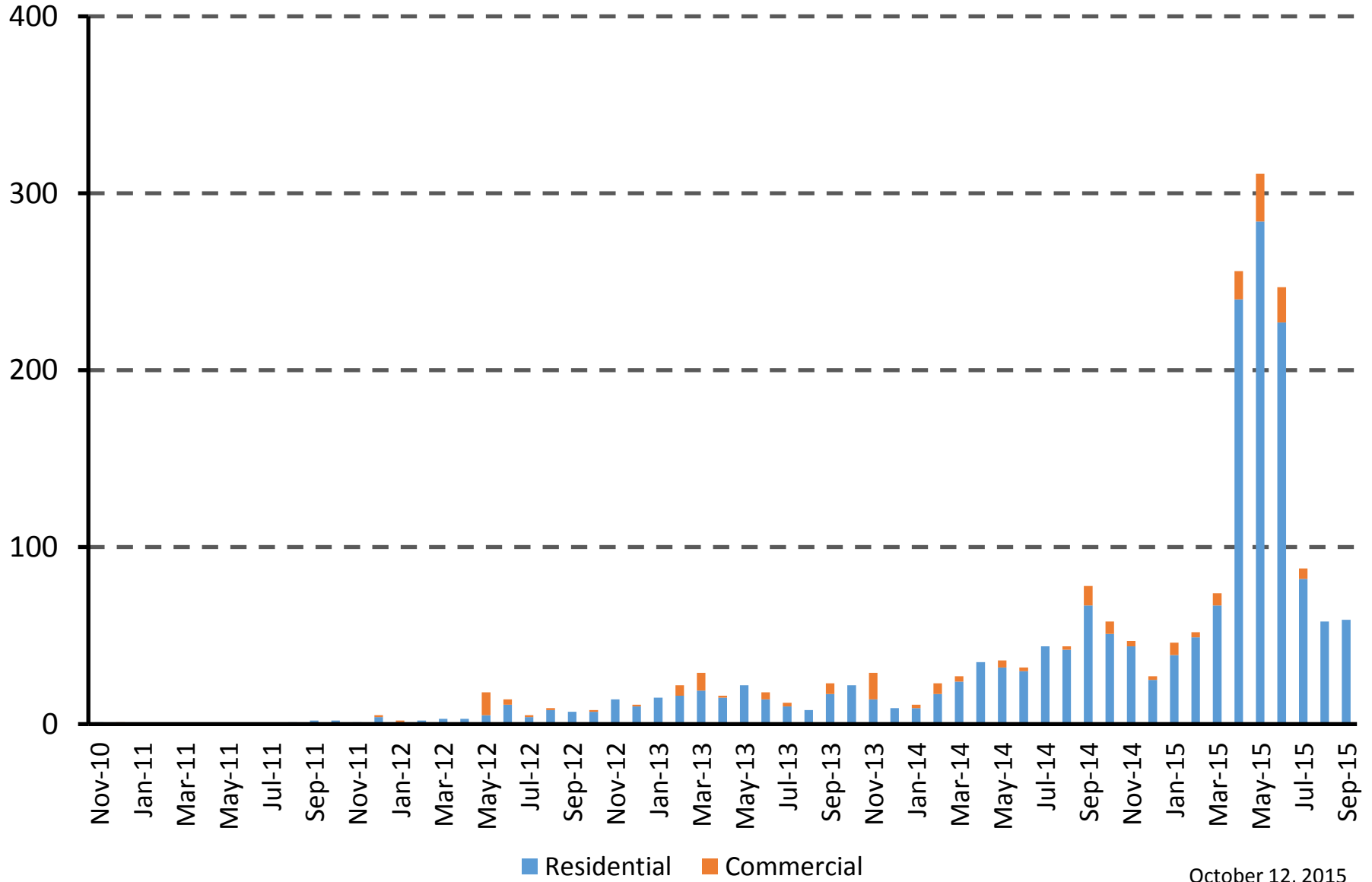
Monthly MNWD RW Production



October 12, 2015

Total Turf Removal Applications by Month

Applications



Square Feet Total Turf Removal Application Size by Month

