

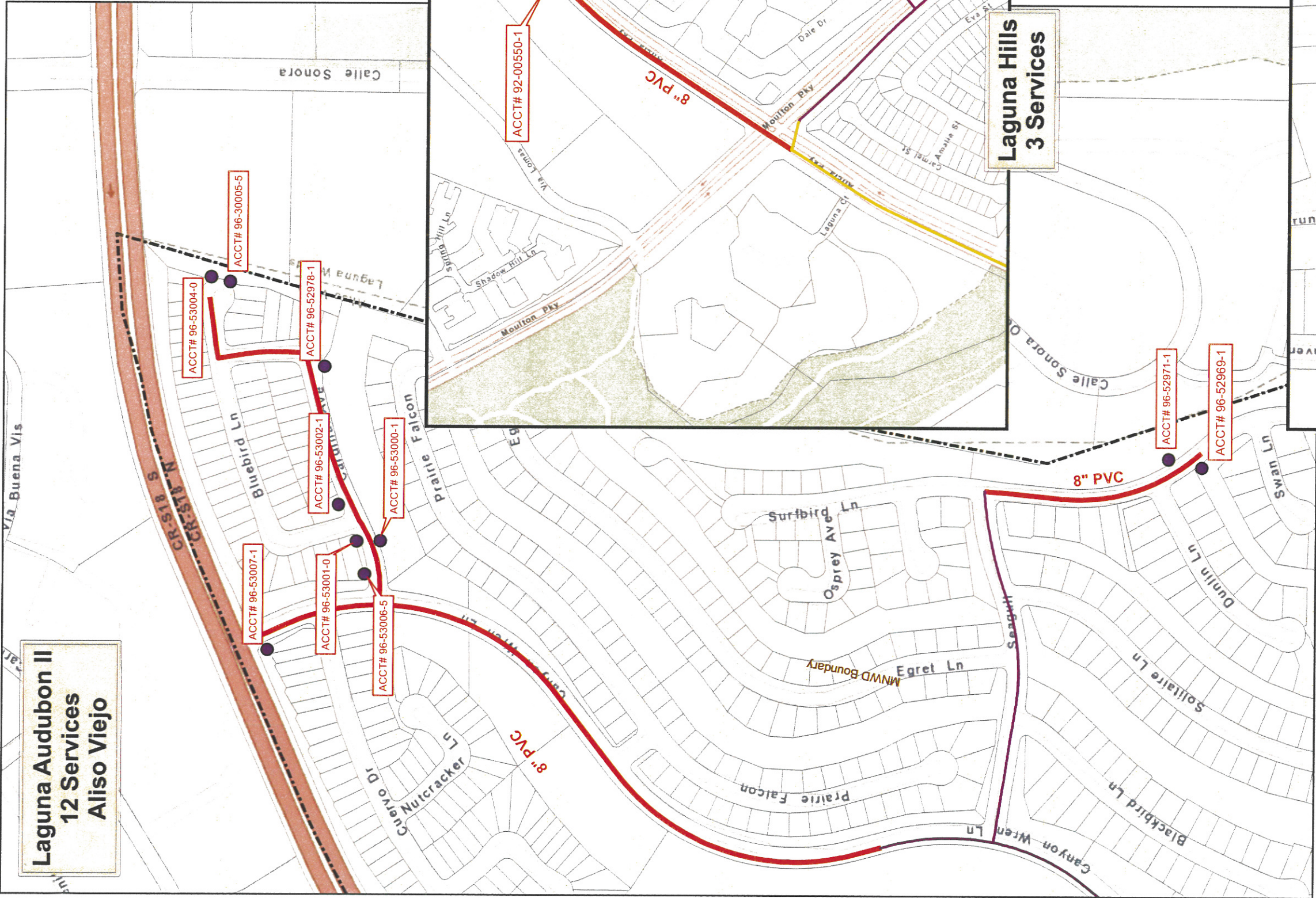
Path: G:\GIS\Projects\Projects\2015\RW\Extensions\Locations_RW\WoodMap\Overview.mxd

Recycled Water Extension Project Areas

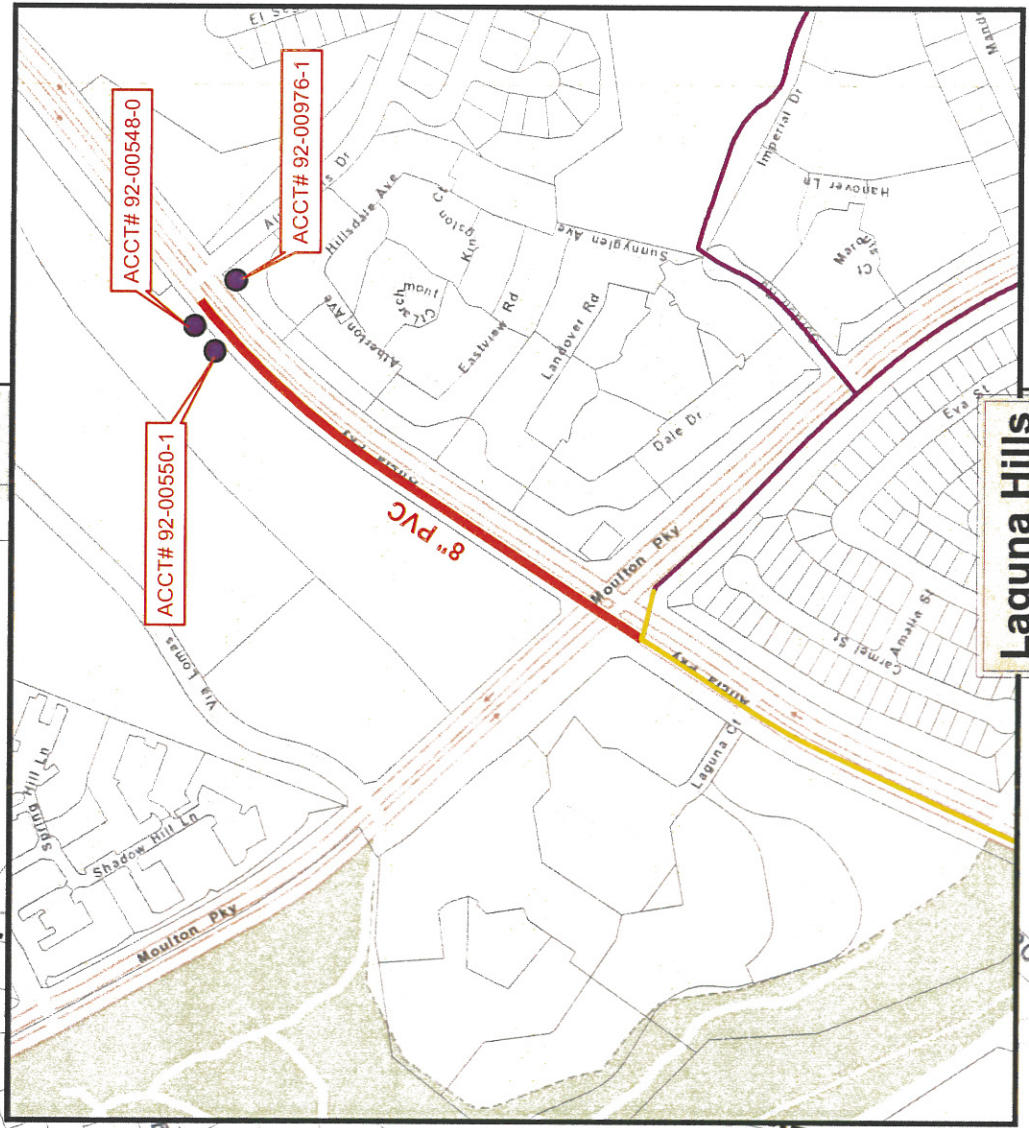


Scale = 1:52,000

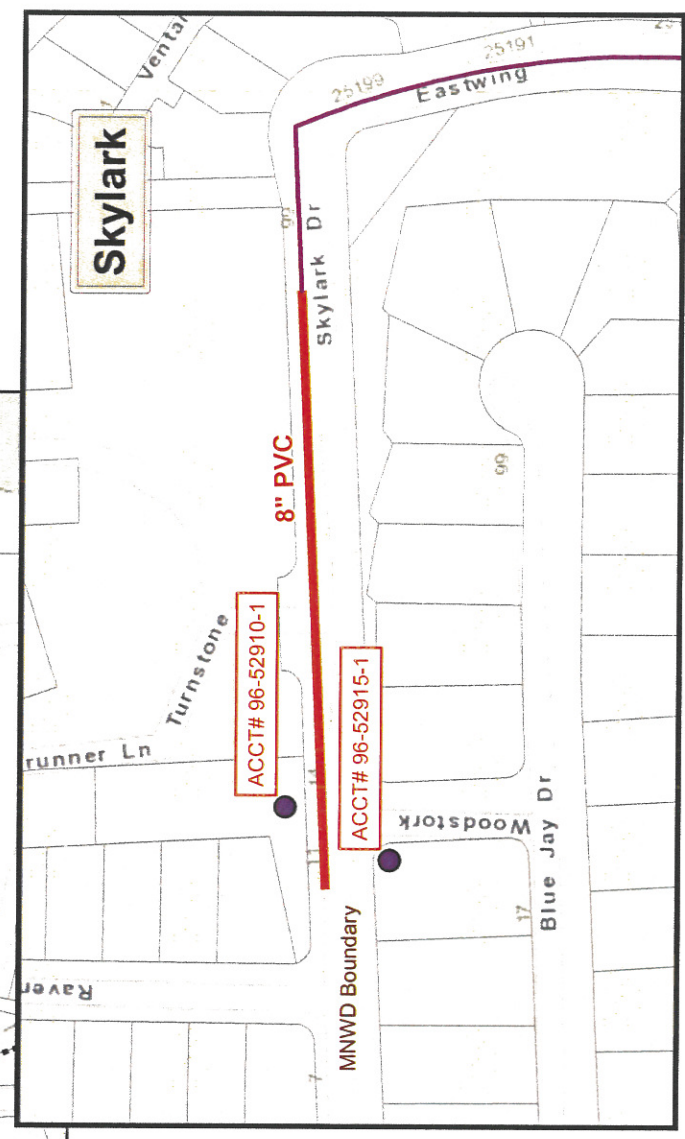
- Proposed RW Meters
- Proposed Recycled Lines
- - - District Boundary
- Cities



Laguna Audubon II
12 Services
Aliso Viejo



Laguna Hills
3 Services



Skylark

- Existing Recycled Distribution Main
- Existing Recycled Transmission Main
- Proposed Recycled Line

Beacon Hill, Laguna Niguel 12 Services

ACCT# 97-08018-0

ACCT# 97-08016-0

ACCT# 97-08012-2

ACCT# 97-08010-0

ACCT# 97-08008-0

ACCT# 97-07970-0

ACCT# 97-07972-0

ACCT# 97-08004-1

ACCT# 97-07700-1

ACCT# 97-08130-0

ACCT# 91-17256-2

ACCT# 91-16520-0

Laguna Hills AVCA Woodwinds 2 Services

ACCT# 96-00752-0

ACCT# 96-00763-0

South Peak

ACCT# 91-13912-0

ACCT# 91-07570

ACCT# 91-07570

Crown Valley

- Existing Recycled Distribution Main
- Existing Recycled Transmission Main
- Proposed Recycled Line

6" PVC

4" PVC

MNWD Boundary

MNWD Boundary

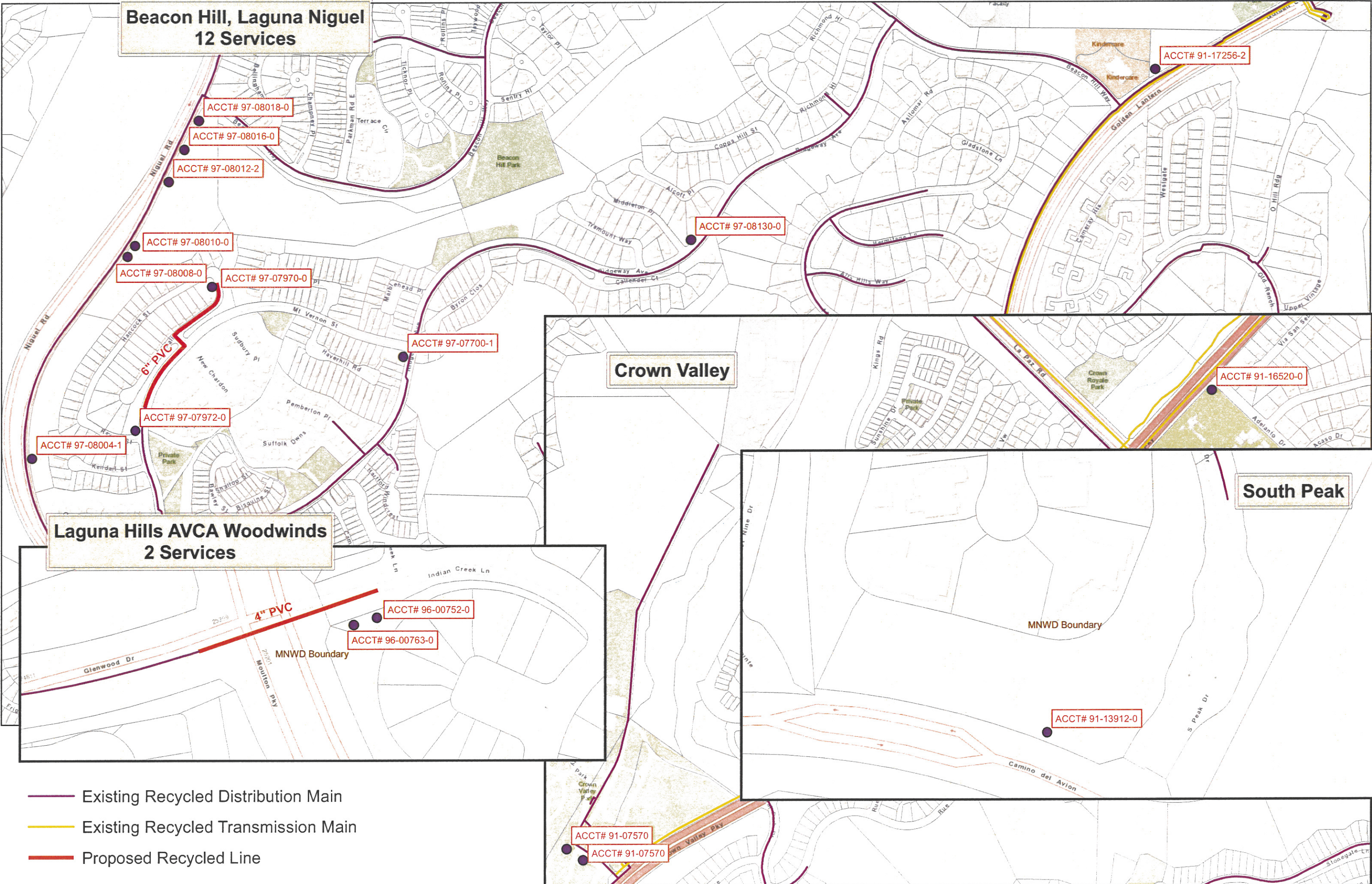
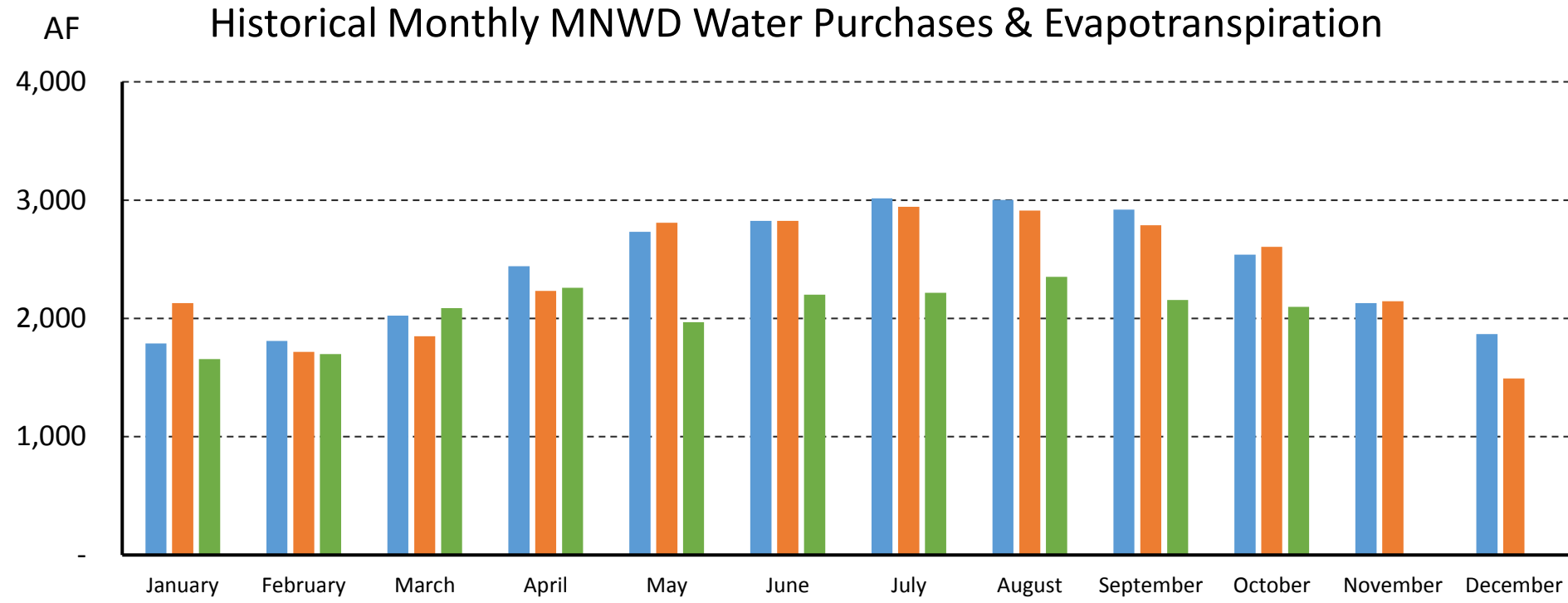


Table 1
Summary of Potable Accounts Proposed for Conversion to Recycled Water

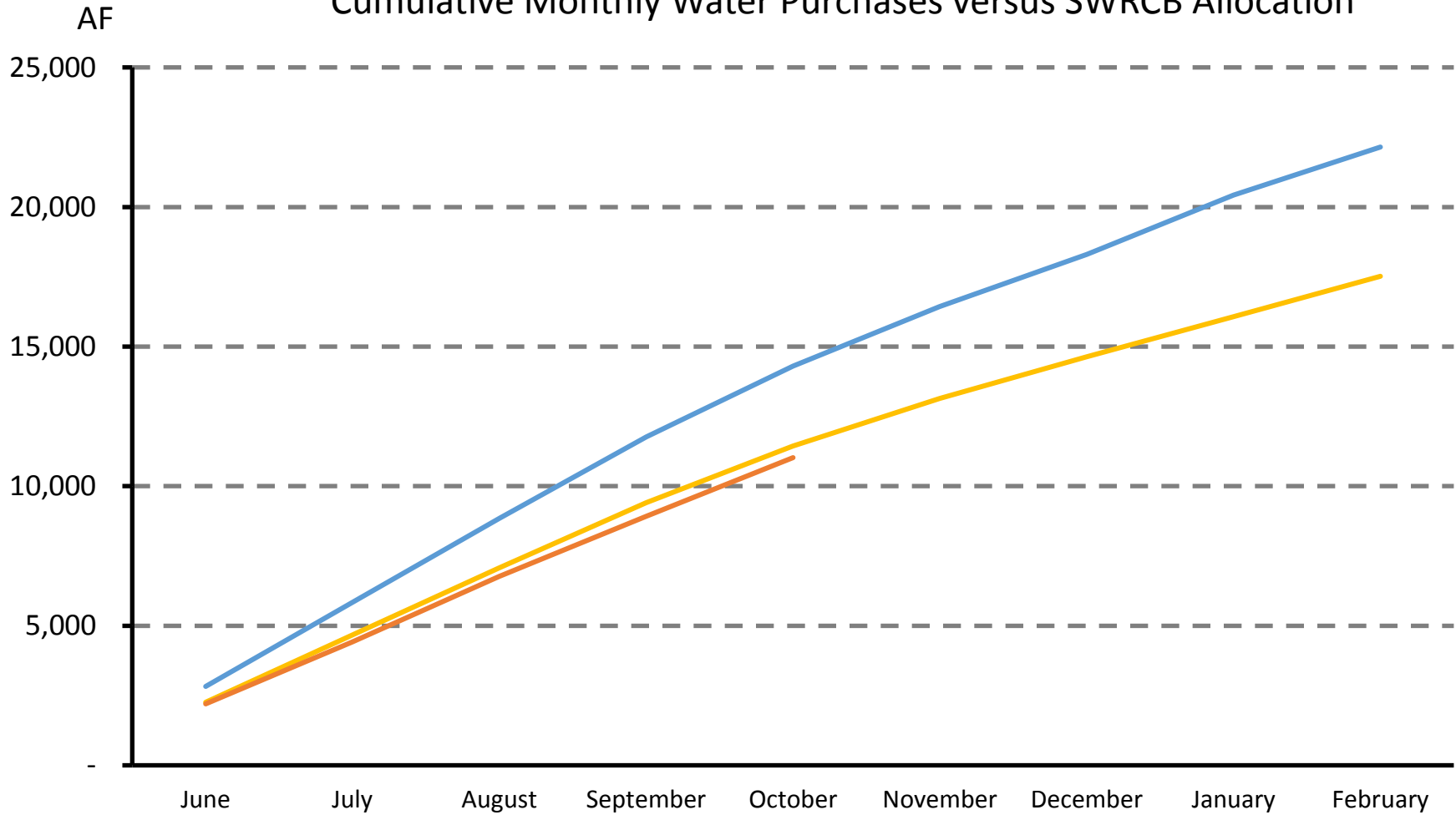
<i>Accounts</i>	<i>APN</i>	<i>Community/End User</i>	<i>Annual Average Potable Usage, acre-feet per year (2009 to 2014)</i>
96-53001-0 96-53002-1 96-53007-1 96-53006-5 96-53000-1 96-53004-0 96-53005-5 96-52978-1 96-52969-1 96-52971-1 96-52910-1 96-52915-1	623-241-04 623-242-01 623-261-90 621-261-41 623-251-43 623-241-40 623-241-40 623-251-43 623-292-53 623-291-01 623-423-13 623-423-13	Laguna Audubon HOA, Aliso Viejo	21.6
97-07700-1 97-08130-0 97-08018-0 97-08016-0 97-08012-1 97-08010-0 97-08008-0 97-08004-1 91-05090-5 91-07570-0 91-17256-2	652-121-31 652-211-10 652-071-17 652-071-17 652-071-17 652-092-35 652-092-35 672-561-02 639-031-01 654-033-22 120-192-34	Various locations in the City of Laguna Niguel	41.9
96-00763-0 96-00752-0	625-351-19 625-361-28	Woodwind, Aliso Viejo	4.6
91-16520-0	637-091-01	Crown Valley Elementary	8.1
97-07970-0 97-07972-0	652-071-01 652-091-01	Beacon Hill Mount Vernon	9
92-00548-0 92-00976-1 92-00550-0	625-211-03 625-391-03 625-211-03	Alicia Extension	11.4
91-13912-0	659-251-03	South Peak HOA	5.7
Total			102.3



Year	ET (Inches)												
2013	2.54	2.88	4.08	4.79	5.99	6.07	5.81	6.53	5.26	3.92	2.52	2.49	
2014	2.82	2.64	4.09	5.54	6.39	6.45	6.54	6.23	5.21	3.94	3.16	1.91	
2015	2.52	3.02	4.96	5.31	4.48	5.75	5.69	6.27	5	3.88			

November 16, 2015

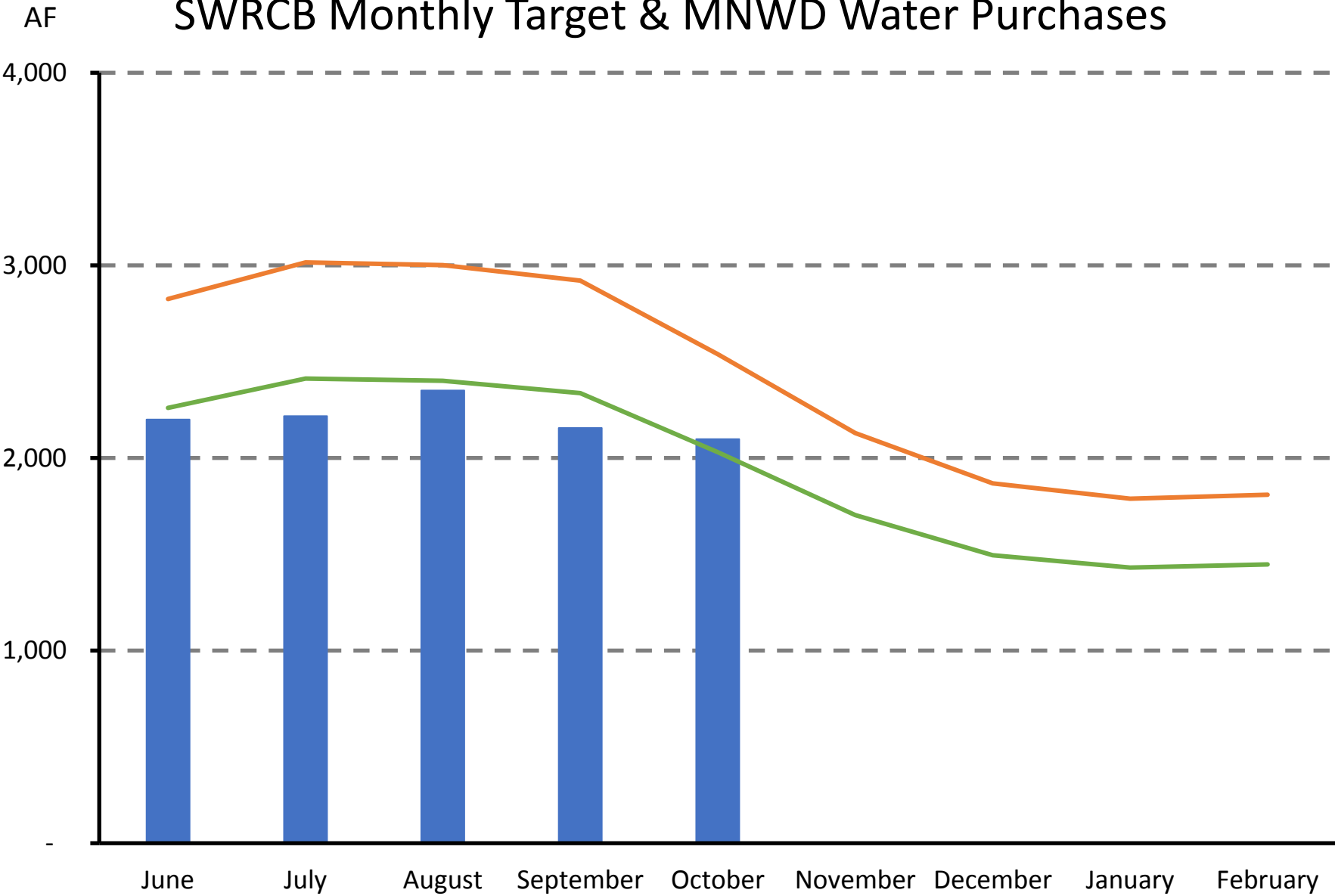
Cumulative Monthly Water Purchases versus SWRCB Allocation



— 2013/2014 Production — SWRCB Target — 2015/2016 Production

November 16, 2015

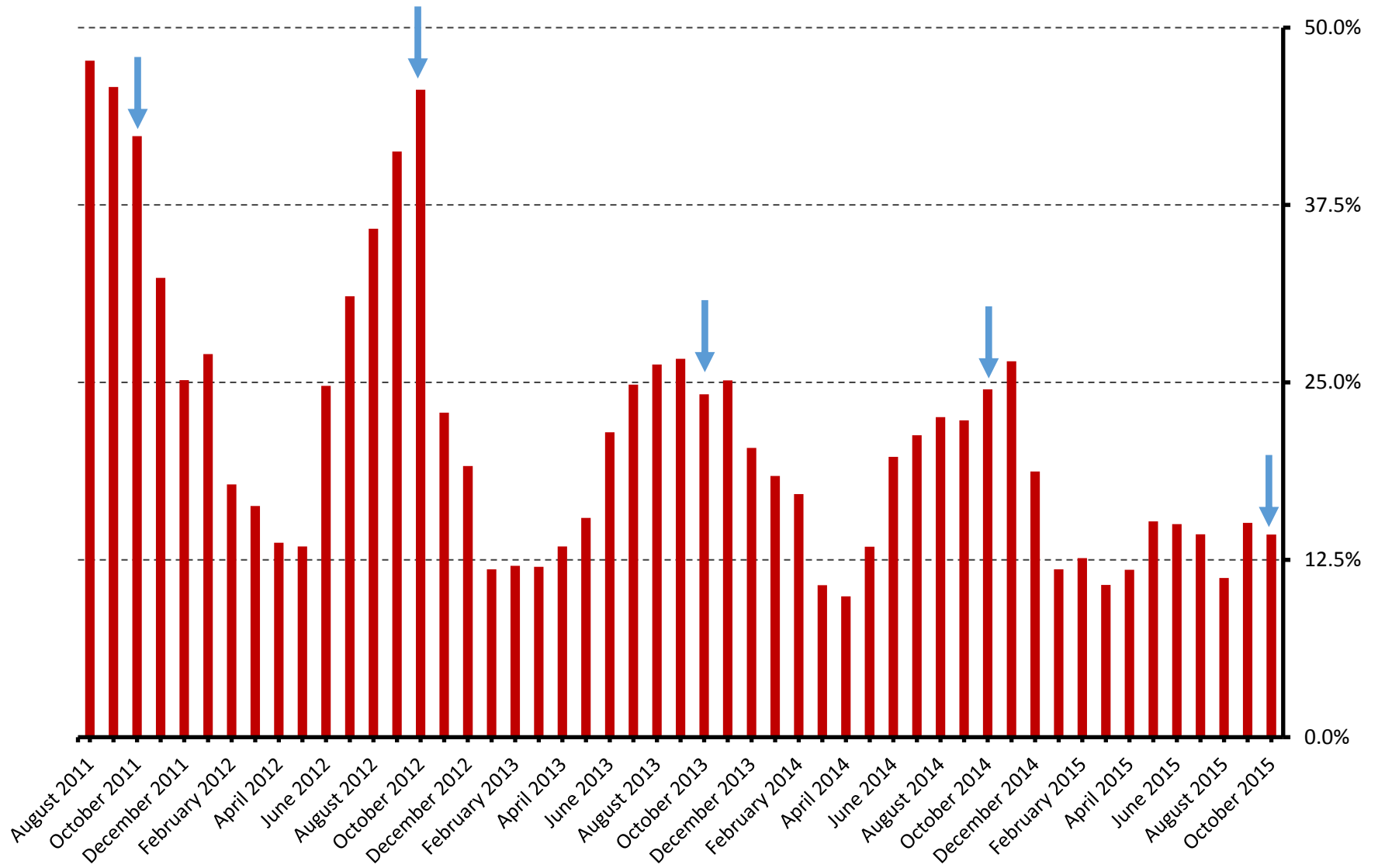
SWRCB Monthly Target & MNWD Water Purchases



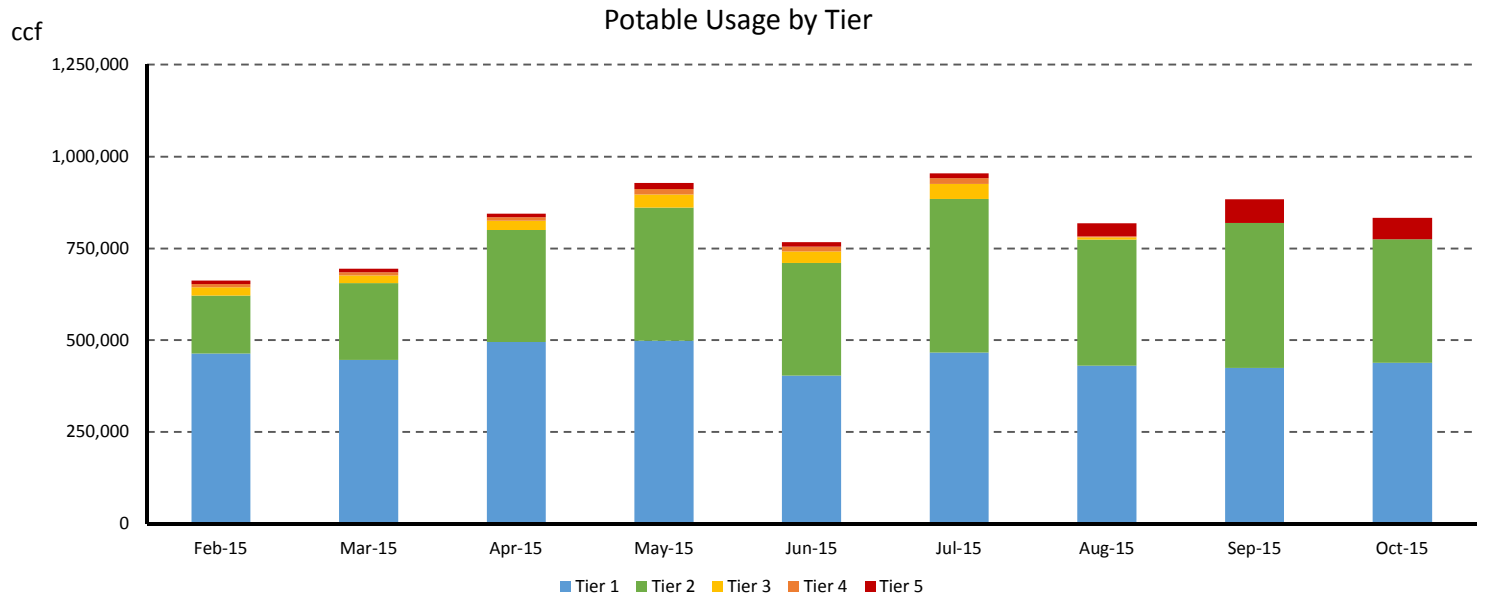
■ 2015/2016 Production — 2013 Production — SWRCB Target

November 16, 2015

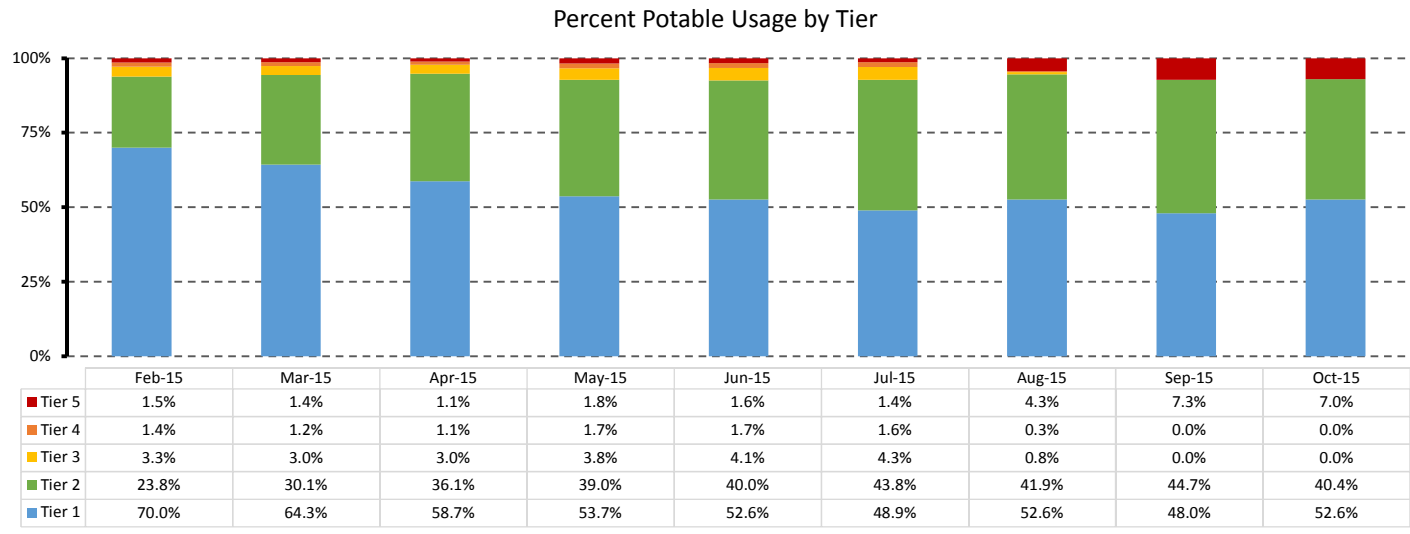
Single Family Residential Accounts Above Tier 2



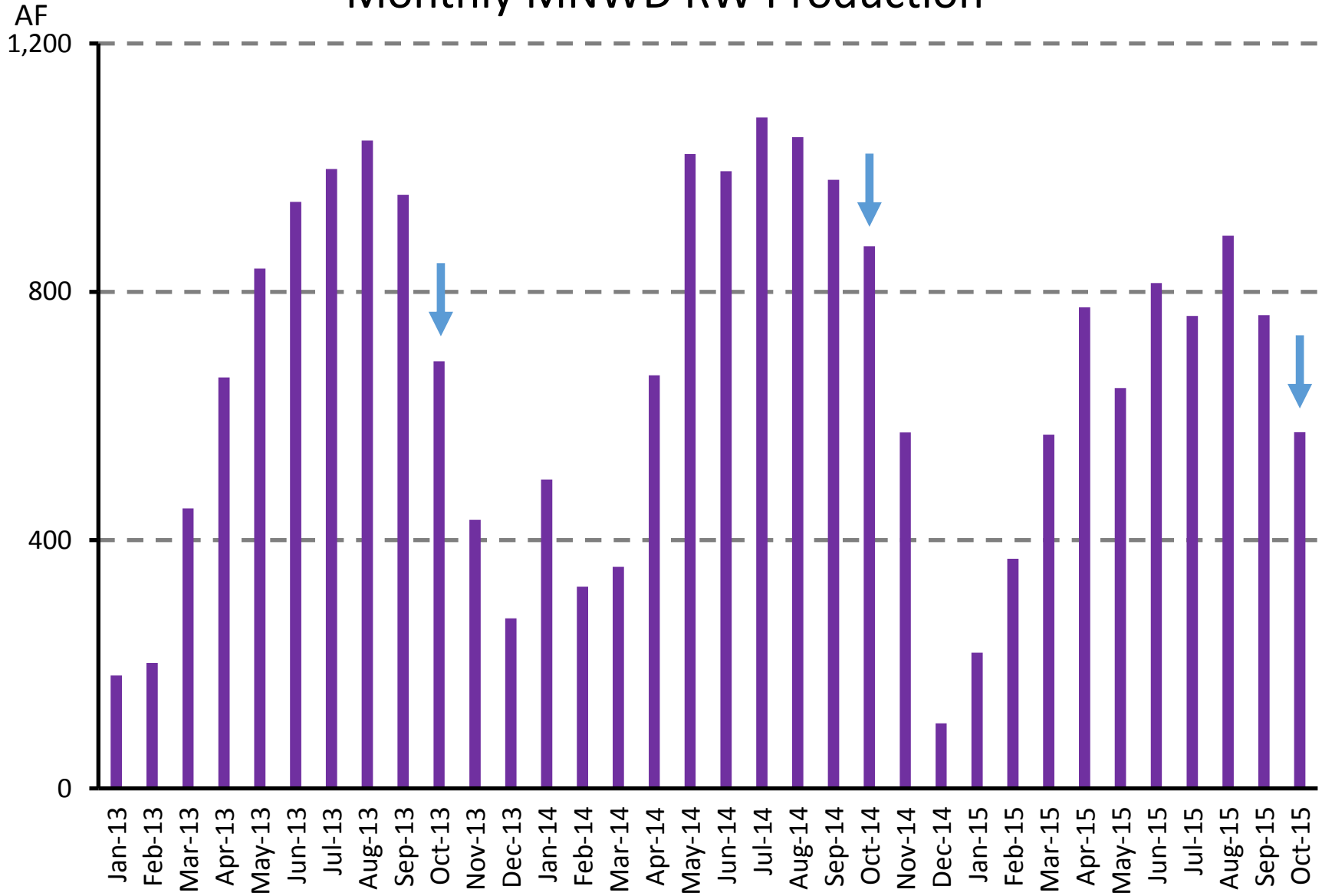
November 16, 2015



AF in Tier 3, 4, 5	Feb-15	Mar-15	Apr-15	May-15	Jun-15	Jul-15	Aug-15	Sep-15	Oct-15
	94	89	101	154	131	159	102	148	134

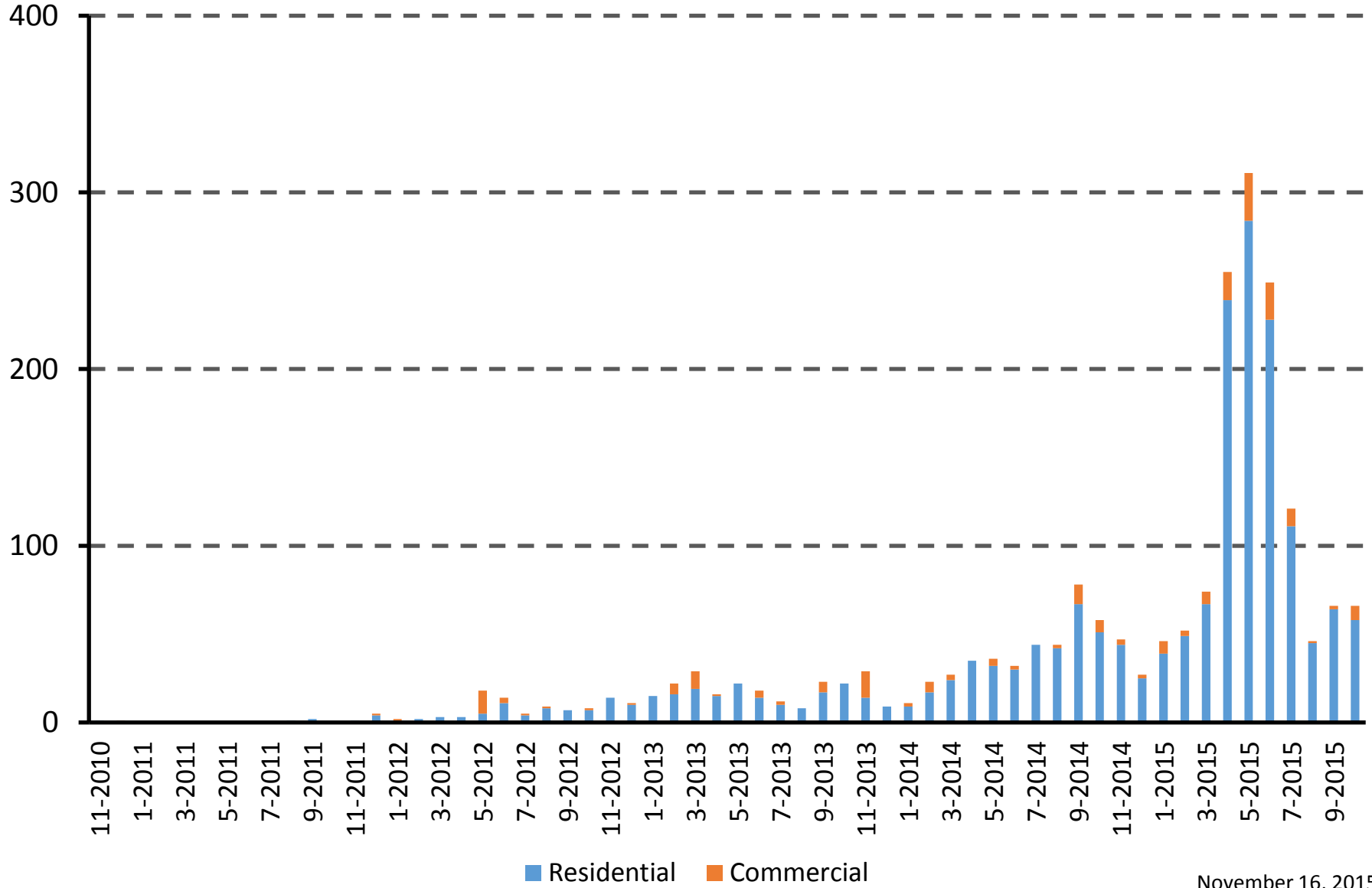


Monthly MNWD RW Production



Total Turf Removal Applications by Month

Applications



November 16, 2015

Square Feet Total Turf Removal Application Size by Month

