

GROUT CONNECTION HOLES (WHEN REQUIRED) FOR SPACING SEE BELOW

OVERBELL DIMENSION

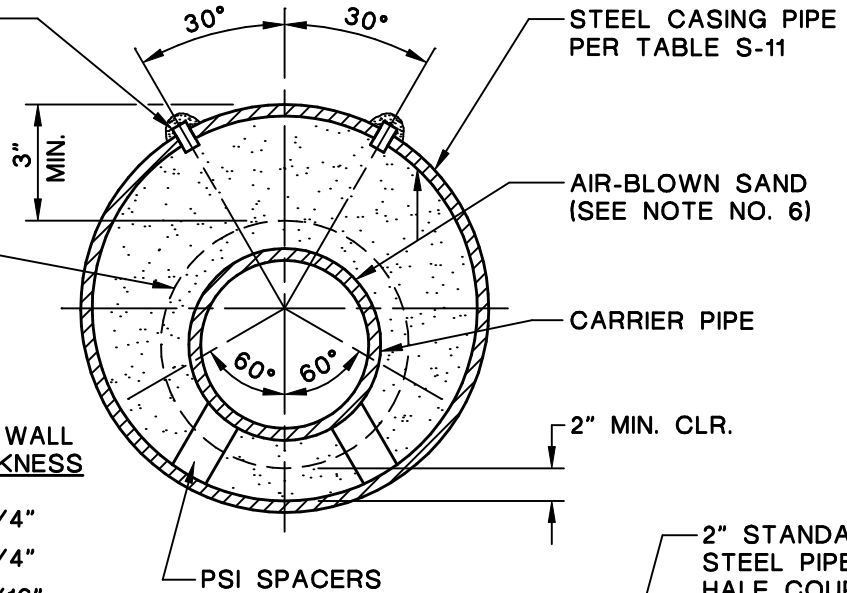
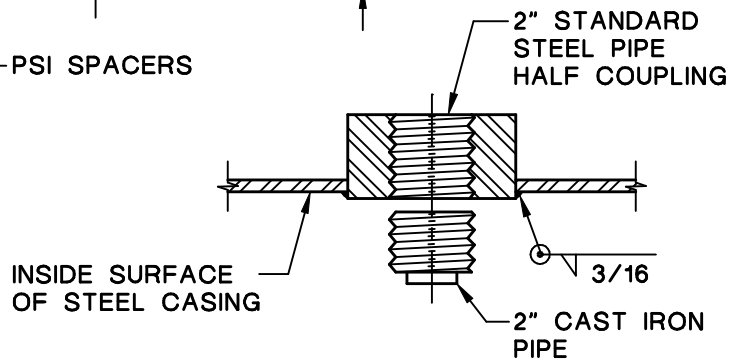


TABLE S-11

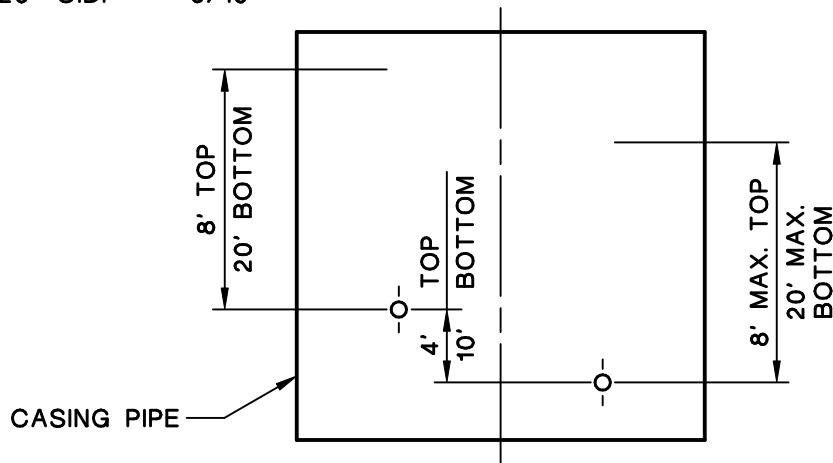
VCP SIZE	MIN. CASING SIZE	MIN. WALL THICKNESS
6"	16" I.D.	1/4"
8"	18" I.D.	1/4"
10"	21" I.D.	5/16"
12"	24" O.D.	5/16"

PVC SIZE	MIN. CASING SIZE	MIN. WALL THICKNESS
6"	12" I.D.	1/4"
8"	16" I.D.	1/4"
10"	18" I.D.	5/16"
12"	20" O.D.	5/16"

2" MIN. CLR.



GROUT COUPLING



NOTES:

1. ALL STEEL CASING PIPE FIELD JOINTS SHALL BE WELDED FULL CIRCUMFERENCE.
2. PERIFERY OF CASING (LARGER THAN 30") TO BE PRESSURE GROUTED.
3. CARRIER PIPE SHALL BE AIR TESTED PRIOR TO FILLING CASING WITH AIR-BLOWN SAND.
4. UPSTREAM AND DOWNSTREAM ELEVATIONS TO BE VERIFIED PRIOR TO FILLING CASING.
5. "PSI" SPACERS MODEL C8G-2 SHALL BE PROVIDED PER MANUFACTURER'S RECOMMENDATIONS.
6. UNLESS OTHERWISE NOTED ON THE PLANS, THE ANNULAR SPACE WITHIN THE CASING SHALL BE FILLED WITH AIR-BLOWN SAND.

MOULTON NIGUEL WATER DISTRICT

STEEL CASING PIPE

S-11