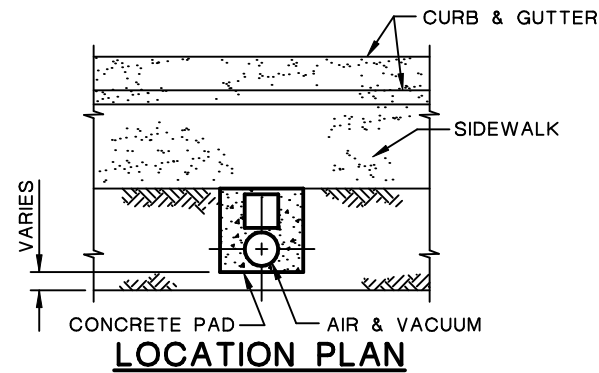
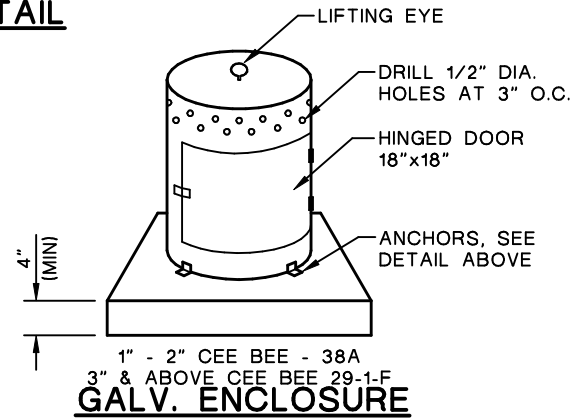


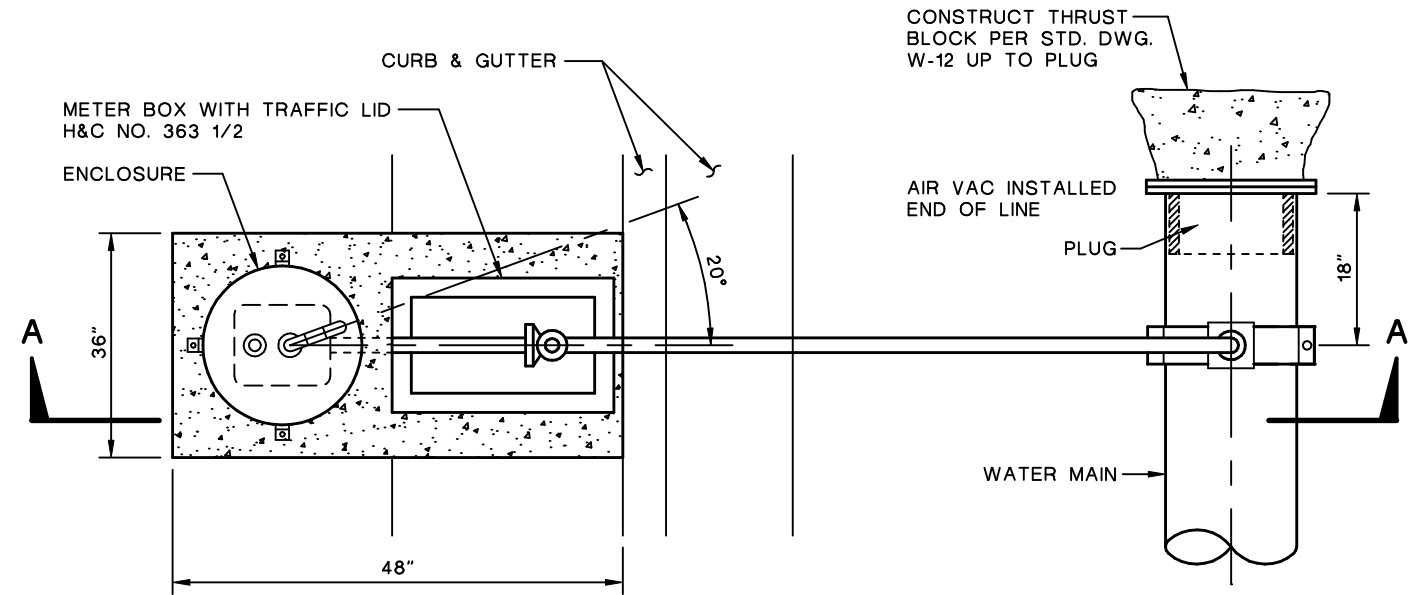
**ANCHOR DETAIL**



**LOCATION PLAN**



**GALV. ENCLOSURE**

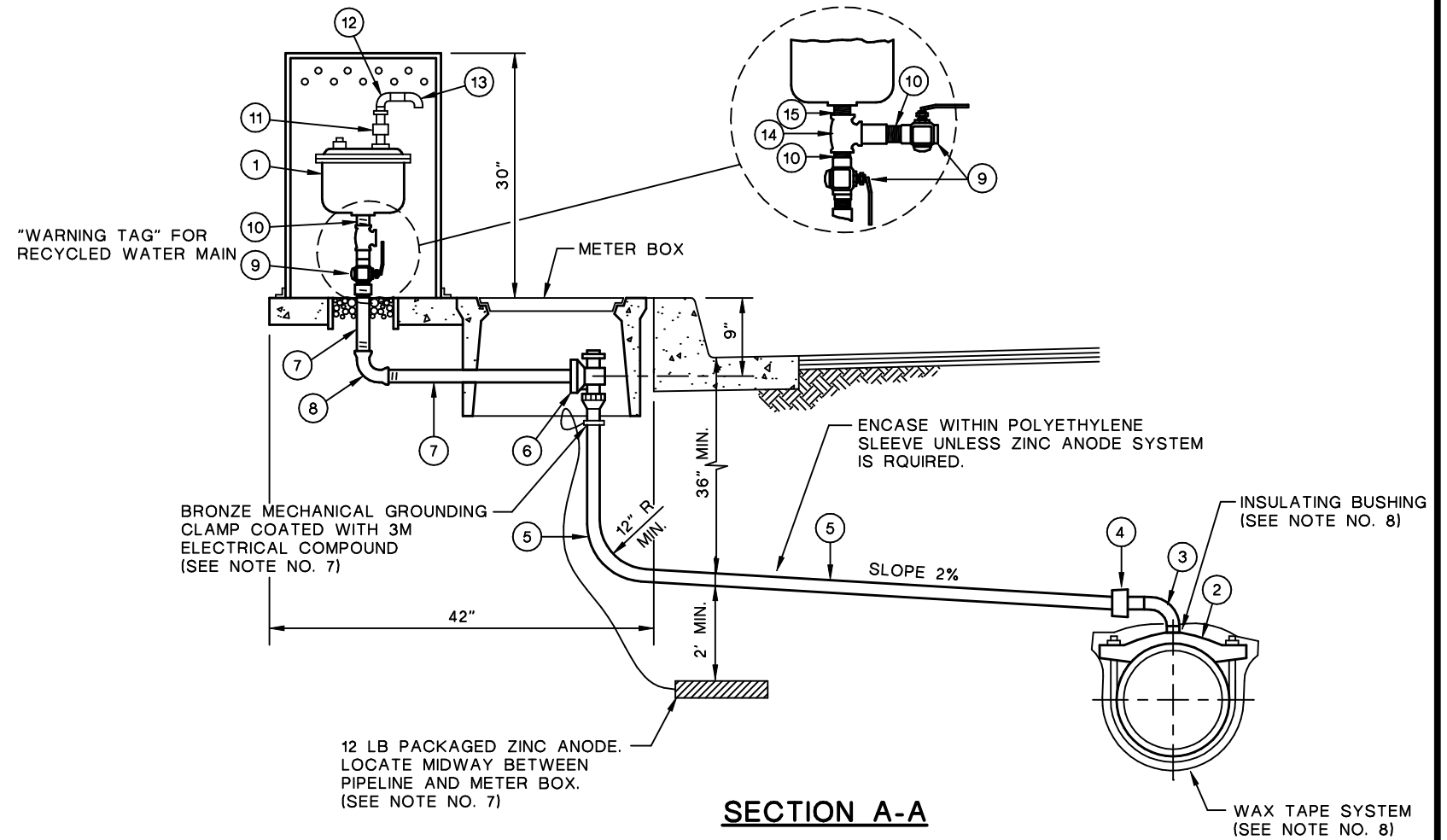


**PLAN**

MATERIAL LIST FOR 1" AND 2"			
ITEM	DESCRIPTION	MATERIAL	MANUFACTURER
①	COMB. AIR RELIEF & VACUUM RELEASE VALVE	CAST IRON	SEE SECT. 15089
②	STRAP SERVICE SADDLE	BRONZE	SEE W-1 OR W-3 MATERIAL LIST
③	90° STREET ELBOW	BRASS	
④	CORPORATION STOP		SEE W-1 OR W-3 MATERIAL LIST
⑤	TUBING	TYPE "K" COPPER	
⑥	ANGLE METER STOP	BRONZE	SEE W-1 OR W-3 MATERIAL LIST
⑦	NIPPLE	BRASS	
⑧	90° ELBOW	BRASS	
⑨	BALL VALVE WITH HANDLE	BRONZE	
⑩	SHORT NIPPLE	BRASS	
⑪	UNION	SCH 80 PVC	
⑫	90° STREET ELBOW	SCH 80 PVC	
⑬	90° STREET ELBOW WITH SCREEN	SCH 80 PVC	
⑭	TEE	BRASS	
⑮	SHORT NIPPLE	STAINLESS STEEL	

**NOTES**

- FOR PIPELINES LARGER THAN 10" THE DISTRICT WILL DETERMINE SIZE OF AIR AND VACUUM RELEASE VALVE.
- RETAINING WALL MAY BE REQUIRED WHEN ADJACENT TO SLOPES.
- FURNISH FITTINGS OF LIKE MATERIAL AS REQUIRED.
- SEE PROJECT PLAN DETAIL FOR MATERIAL LIST FOR ASSEMBLIES 3" AND LARGER.
- ORIENT OUTLET ON TOP OF PIPE.
- INSTALL IDENTIFICATION TAPE ON SERVICE LINE AND WARNING TAG ON BALL VALVE FOR RECYCLED WATER SYSTEM PER SECTION 15151.
- IF DIRECTED BY THE DISTRICT, COMB. AIR VALVE ASSEMBLY SHALL BE PROVIDED WITH A ZINC ANODE SYSTEM TO PROTECT FROM CORROSION.
- ISOLATE COPPER TUBING LATERALS FROM STEEL AND DIP PIPELINES. PROVIDE A NYLON INSULATING BUSHING BETWEEN THE SERVICE SADDLE AND THE CORPORATION STOP. THE OUTLET SIZE ON THE SERVICE SADDLE SHALL BE INCREASED 1/2-INCH TO ACCOMMODATE THE BUSHING. WAX TAPE OF BRONZE SADDLE PER SECTION 13110. INSULATING BUSHING AND WAX TAPE REQUIRED FOR STEEL AND DIP MAINS ONLY.



**SECTION A-A**

**MOULTON NIGUEL WATER DISTRICT**  
**STANDARD COMBINATION VALVE ASSEMBLY**

**W-9**