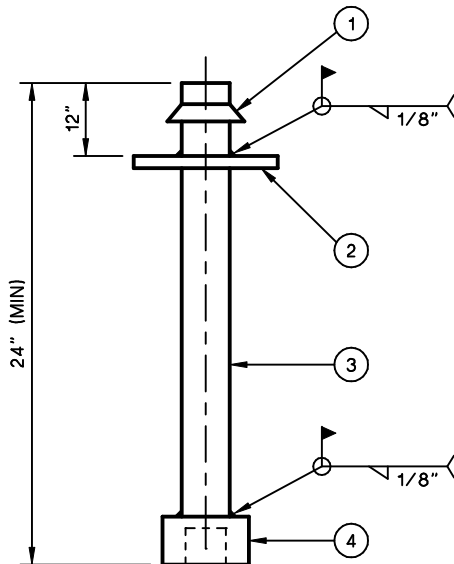


**VALVE ASSEMBLY**

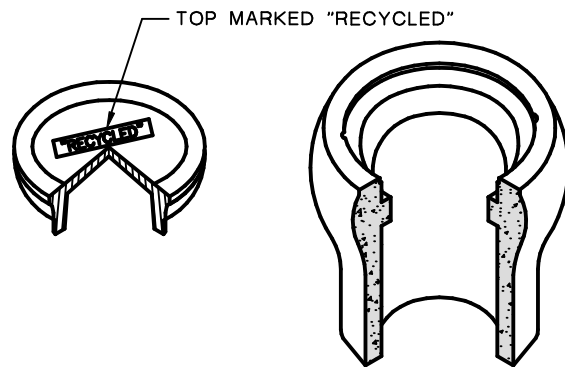


**VALVE STEM EXTENSION**

- ① RESILIENT WEDGE GATE VALVE
- ② 560-C-3250 TYPE V CONCRETE VALVE SUPPORT PROVIDED FOR ALL VALVES. SUPPORT SHALL BE 12"x12"x24"
- ③ 8" SDR35 PVC VALVE RISER AND BOX SBF 1208, TOP MARKED "WATER" SEE NOTE 1.
- ④ NO. 4 REBAR LOOP (2 REQUIRED)
- ⑤ 560-C-3250 TYPE V CONCRETE
- ⑥ NO. 10 GAGE LOCATING WIRE (PVC MAINS ONLY)

**NOTES**

1. VALVE BOX AND LID:  
COVERS WITH "WATER" ON DOMESTIC WATER SYSTEM AND "RECYCLED" ON RECYCLED WATER SYSTEM SOUTH BAY FOUNDRY - SBF-1208 VALVE BOX AND LID
2. THE CONTRACTOR SHALL BE RESPONSIBLE FOR RAISING VALVE BOXES TO GRADE AFTER STREET IS PAVED 1ST LIFT, 2ND LIFT.
3. ALL VALVE LOCATIONS SHALL BE CHISELED ON CURB FACE.
4. ORIENT BUTTERFLY VALVE WITH OPERATOR TO THE RIGHT WHEN LOOKING TOWARD FITTING.
5. IF MAINLINE IS STEEL, BOND ACROSS JOINTS PER STD. DWG. NO. W-31 AND WAX TAPE ALL BURIED EXPOSED STEEL SURFACES.



**VALVE BOX**

- ① A.W.W.A. 2" SQUARE OPERATING NUT
- ② 5" DIA. x 3/16" SPACER PLATE 12" BELOW TOP OF OPERATING NUT
- ③ 1 1/4" ROUND OR SQUARE STOCK (PINNED COUPLERS ARE NOT ALLOWED)
- ④ SOCKET FOR 2" SQUARE OPERATING NUT

**NOTES**

1. PROVIDE VALVE STEM EXTENSION WHEN DEPTH TO TO VALVE NUT EXCEEDS 48" INCHES (FABRICATE EXTENSION TO FIELD MEASUREMENT - SEE NOTE 2)
2. NO VALVE STEM EXTENSION SHALL BE LESS THAN 24" IN LENGTH. TERMINATE EXTENSION 24" TO 30" FROM FINISHED GRADE.
3. PROVIDE ADDITIONAL SPACER PLATE WHEN DISTANCE TO BOTTOM SOCKET EXCEEDS 5 FEET.