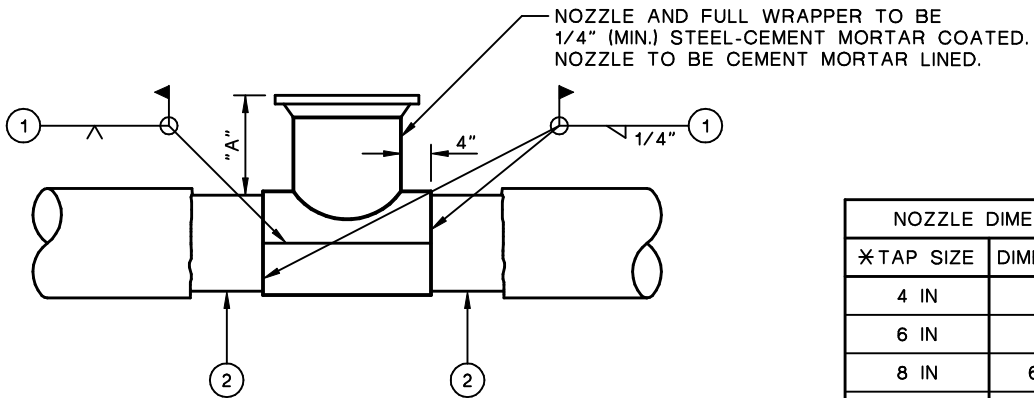


- ① TAPPING SLEEVE - MUELLER - CAST IRON, MJ
- ② TAPPING VALVE - RESILIENT WEDGE, FLANGED
- ③ CONSTRUCT CONCRETE THRUST BLOCK PER STD. DWG. W-12
- ④ VALVE RISER AND BOX PER STD. DWG. W-8

NOTES

- 1. AIR TEST TAPPING SLEEVE PRIOR TO TAP
- 2. COAT ALL TAPPING SLEEVE BOLTS WITH KOPPERS BITSMASTIC
- 3. USE SHELL CUTTER ON ALL PVC TAPS

TAP OF ACP, PVC OR D.I.P. MAINS



PLAN

NOZZLE DIMENSIONS	
✕ TAP SIZE	DIMENSION "A"
4 IN	5 IN
6 IN	6 IN
8 IN	6 3/4 IN
10 IN	7 IN
12 IN	7 1/2 IN

CONSTRUCTION STEPS

- ① WELD NOZZLE TO PIPE
- ② AIR TEST NOZZLE
- ③ TAP PIPE
- ④ INSTALL WIRE MESH AND MORTAR OVER EXPOSED STEEL

TAP OF STEEL MAINS

MOULTON NIGUEL WATER DISTRICT

HOT TAP

W-6